



NOTRE DAME

WOMEN'S BASKETBALL

FIGHTING IRISH MEDIA

Primary Women's Basketball Contact

Josh Bates	jbbates2@nd.edu
@Josh13Bates	574-310-9954

GAME 16

#2/2 LOUISVILLE (14-0, 2-0)

2018-19 RESULTS (14-1, 2-0)

Date	Opponent	TV	Time/Result
N9	Harvard	ACCN Extra	W, 103-58
N12	Penn	ACCN Extra	W, 75-55
N17	at #15/15 DePaul		W, 101-77
N22	vs Gonzaga+		W, 81-65
N23	vs Drake+		W, 82-64
N24	vs #9/8 Oregon State+		W, 91-81
N29	#14/15 Iowa^	ESPN2	W, 105-71
D2	#2/2 UConn&	ESPN	L, 89-71
D8	at Toledo		W, 72-56
D16	Binghamton	ACCN Extra	W, 103-53
D19	Western Kentucky	ACCN Extra	W, 94-53
D22	at #19/17 Marquette	FS1	W, 87-63
D30	Lehigh	ACCN Extra	W, 95-68
J3	Pittsburgh*	ACCN Extra	W, 100-44
J6	at Georgia Tech*	RSN	W, 76-55
J10	#2/2 Louisville*	ESPN	7 pm
J13	Wake Forest*	ACCN Extra	1 pm
J16	at Virginia Tech*	ACCN Extra	7 pm
J20	Boston College*	ACCN Extra	1 pm
J24	at Tennessee	ESPN/ESPN2	7 pm
J27	at North Carolina*	ACCN Extra	2 pm
J31	at Clemson*	ACCN Extra	7 pm
F3	Georgia Tech*	RSN	Noon
F7	at Miami*	ACCN Extra	7 pm
F10	Florida State*	ESPN	Noon
F13	at Boston College*	ACCN Extra	7 pm
F18	at NC State*	ESPN2	7 pm
F21	Duke*	ACCN Extra	7 pm
F25	at Syracuse*	ESPN2	6 pm
M3	Virginia*	RSN	12:30 pm
M6-10	ACC Championships	TBD	TBD
M22-25	NCAA 1st & 2nd Rounds	TBD	TBD
M29-A1	NCAA Regionals	TBD	TBD
A5-7	NCAA Final Four	TBD	TBD

+ - Vancouver Showcase

^ - ACC/Big Ten Challenge

& - Jimmy V Classic | Hartford, Connecticut

* - Atlantic Coast Conference game

GAME INFO

	Thursday, Jan. 10 7 pm ET	Pavilion Purcell (9,149)
	ESPN	Adam Amin, Rebecca Lobo, Kara Lawson, Holly Rowe
	Pulse FM 96.9 / 92.1/103.1	Bob Nagle
	Follow the live stats on UND.com	
	@NDWBB #Golrish	GREEN OUT

THE SERIES

vs UL	ND leads, 14-6	Last: Louisville won, 74-72, in Greensboro on 3/4/18	Streak: L2
Home vs UL	ND leads, 5-2	Last: ND won, 85-66, on 2/6/17	Streak: W4

THE COACHES

	Head Coach	At School	Overall
ND	Muffet McGraw	814-231 (32nd year)	902-272 (37th year)
UL	Jeff Walz	313-96(12th year)	Same

BY THE NUMBERS

2,108	Career points for Ogunbowale - she became the 5th player to surpass 2,000 points. Currently ranks 4th all-time and is eyeing Skylar Diggins-Smith's program record of 2,357.
978	All-time Notre Dame program wins
902	Coach McGraw Career Wins - 4th fastest DI coach to reach milestone and 9th ever to do so.
814	Coach McGraw wins at Notre Dame
222	Consecutive weeks ranked in the AP Poll - ranks 3rd // 153 straight weeks in the top-10 - ranks 2nd.
91-16	Against Top-25 teams over the past seven years
79-3	Notre Dame's record in league play since joining the ACC for 2013-14 season
62	NCAA Tournament wins - 5th most in Division I
51	Straight conference wins at home, dating back to 2012
25	Total conference championships
23	straight NCAA Championship appearances - fourth longest active streak & fifth longest all-time
20	Different All-Americans
10	30-win seasons in program history and eighth straight year
8	Final Four appearances
7	Regular season league championships in a row (2 Big East / 5 ACC)
6	NCAA Title game appearances - 1 of 4 schools to do so (Tennessee, UConn and La Tech)
5	All five starters were named to the Naismith positional award watch lists - No other school even had four // All five starters have over 1,000 career points - only Notre Dame & Marquette can claim this feat
4	Ranked wins on the year // 4 30-point scoring performances from Ogunbowale
3	rd ranked scoring offense in the country, averaging 89.1 points per game
2	National Titles - Notre Dame became the seventh program with multiple national championships
1	Naismith Memorial Basketball Hall of Famer // No. 1 ranked RPI & SOS

2018-19 NOTRE DAME WOMEN'S BASKETBALL



CLUB GRAND

**FIVE STARTERS
FIVE 1,000 POINT SCORERS**

BRIANNA TURNER | **1,650 pts**

JACKIE YOUNG | **1,020 pts**

MARINA MABREY | **1,605 pts**

JESS SHEPARD | **1,921 pts**

ARIKE OGUNBOWALE | **2,108 pts**





NOTRE DAME ROSTER

No.	Name	Position	Height	Year	Hometown	Previous School
0	Jordan Nixon	G	5-8	Fr.	New York City, N.Y.	Mary Louis Academy
2	Kaitlin Cole	G	5-10	Jr.	Toledo, Ohio	Sylvania Northview
3	Marina Mabrey	G	5-11	Sr.	Belmar, N.J.	Manasquan
5	Jackie Young	G	6-0	Jr.	Princeton, Ind.	Princeton Community
10	Katlyn Gilbert	G	5-10	Fr.	Indianapolis, Ind.	Heritage Christian
11	Brianna Turner	F	6-3	Gs.	Pearland, Texas	Manvel
20	Nicole Benz	G	5-8	So.	Valencia, Calif.	William S. Hart
12	Abby Prohaska	G	5-10	Fr.	Liberty Township, Ohio	Lakota West
22	Danielle Cosgrove	F	6-4	Fr.	Holbrook, N.Y.	Sachem East
24	Arike Ogunbowale	G	5-8	Sr.	Milwaukee, Wis.	Divine Savior Holy Angels
30	Mikayla Vaughn	C	6-3	So.	Philadelphia, Penn.	Paul VI
32	Jessica Shepard	F	6-4	Sr.	Fremont, Neb.	Nebraska / Fremont
33	Danielle Patterson	F	6-2	So.	Brooklyn, N.Y.	Mary Louis Academy
40	Maureen Butler	F	6-1	Jr.	Livonia, Mich.	Dearborn Divine Child

Karen & Kevin Keyes Women's Basketball Head Coach	Muffet McGraw	Saint Joseph's '77	32nd Season / 37th Overall
Associate Head Coach	Carol Owens	Northern Illinois '90	19th Season
Associate Head Coach	Niele Ivey	Notre Dame '00	12th Season
Associate Coach	Beth Cunningham	Notre Dame '97	7th Season
Director of Operations / Sport Administrator	Katie Capps	Western Kentucky '02	4th Season / 1st as Admin
Video Coordinator	James Spinelli	Temple '14	1st Season



AT THE HELM

Karen and Kevin Keyes head coach Muffet McGraw is in the midst of her 32nd season at the helm of the Irish (814-231) and 37th year overall as a head coach (902-272). McGraw ranks eighth all-time in career victories among Division I coaches and sits one back from Jim Foster (903) in seventh place. McGraw also ranks sixth among active coaches.

McGraw is also just one of four coaches (men's or women's basketball) in NCAA Division I history with 900 wins, eight Final Fours and multiple national championships. The prestigious list includes Pat Summitt, Geno Auriemma and Duke men's coach Mike Krzyzewski.

In September of 2017, McGraw was enshrined into the Naismith Memorial Basketball Hall of Fame, becoming the 32nd woman ever to do so and 13th female coach.

Coach McGraw now boasts eight Final Four wins, third behind Auriemma and Summit, and the third most NCAA Tournament wins with 62. Coach McGraw also became the sixth different coach with multiple NCAA titles, joining Auriemma, Summit, Linda Sharp, Tara VanDerveer and Kim Mulkey.

NEWEST MEMBER OF THE 900 CLUB

Against the very school in which she began her head coaching career, Coach McGraw joined the 900-win club when the Irish defeated Lehigh on Dec. 30. McGraw became the fourth fastest Division I coach to reach the 900 win milestone, doing so in 1,172 games:

Geno Auriemma	1,034 games
Pat Summitt	1,072 games
Tara VanDerveer	1,104 games

PRONUNCIATION

Niele Ivey	knee-ELL
Katlyn Gilbert	Kate-lyn
Marina Mabrey	MAY-bree
Arike Ogunbowale	uh-REE-kay
	OH-goon-buh-WALL-ay
Brianna Turner	bree-ON-uh

TEAM INFORMATION

Conference	Atlantic Coast
Home Arena (Capacity)	Purcell Pavilion (9,149)
Starters Returning/Lost	4/1
Total Returning/Lost	9/4
Newcomers	4
First Season	1977-78
Full Seasons	41
All-Time Record	978-330 (.742)
NCAA Appearances/Record	25 / 62-23 (.709)
First/Last NCAA Appearance	1992 / 2018
ACC Member	2013-14 - present
ACC Regular Season	79-3 (.969)
ACC Tournament	14-1 (1.000)
ACC Tournament Championships	4 (2014-17)

NATIONAL RANKINGS

2018-19 AP TOP 25 (Week 10)	2018-19 USA TODAY COACHES (Week 10)
1. Notre Dame	1. Notre Dame
2. Louisville	2. Louisville
3. UConn	3. UConn
4. Baylor	4. Baylor
5. Oregon	5. Oregon
6. Stanford	6. Mississippi St
7. Mississippi St	7. Stanford
8. NC State	8. NC State
9. Maryland	9. Maryland
10. Oregon St	10. Oregon St
11. Texas	11. Texas
12. Syracuse	12. Syracuse
13. Tennessee	13. Tennessee
14. Gonzaga	14. Marquette
15. Marquette	15. Gonzaga
16. Kentucky	16. Kentucky
17. Iowa	17. Iowa
18. Minnesota	18. Florida St
19. Arizona St	19. Arizona St
20. Iowa St	20. Minnesota
21. South Carolina	21. California
22. Florida St	22. Iowa St
23. Michigan St	23. Miami
24. California	24. Michigan St
25. Indiana	25. South Carolina

Receiving Votes:

Miami 44, Rutgers 41, Missouri 39, DePaul 23, Texas A&M 8, South Dakota 5, Central Michigan 3, Drake 2, Ohio 2, Utah 2, Butler 2, UCF 1, Virginia Tech 1

Receiving Votes:

Missouri 59, Indiana 44, DePaul 29, UAB 21, Texas A&M 18, Rutgers 13, Virginia Tech 12, Central Michigan 10, Drake 9, UCF 6, New Mexico 6, UCLA 5, Tulane 3, South Alabama 2, Michigan 2, Arizona 1, Ohio 1, Troy 1, Butler 1

Team Stats	ACC Only (Rk)	All Games (Rk)
Scoring Offense		89.1 (1)
Scoring Defense		63.5 (12)
Scoring Margin		+25.6 (1)
FT Percentage		.737 (8)
FG Percentage		.526 (1)
FG Pct. Defense		.366 (6)
3-FG Percentage		.331 (7)
3-FG Pct. Defense		.281 (5)
Rebounding Offense		43.5 (2)
Rebounding Defense		33.4 (4)
Rebounding Margin		+10.1 (2)
Blocked Shots		5.1 (1)
Assists		20.1 (1)
Steals		8.4 (7)
Turnover Margin		+2.7 (5)
Assist/TO Ratio		1.4 (1)
Offensive Rebounds		14.0 (6)
Defensive Rebounds		29.5 (3)
3-FG Made		3.9 (14)

Individual Leaders	Stat	ACC (Rk)	All (Rk)
Ogunbowale	Scoring		22.1 (1)
	Assists		4.0 (9)
	A/T.O Ratio		1.6 (9)
Shepard	Scoring		15.4 (10)
	Rebounds		9.5 (4)
	FG%		.605 (5)
	A/T.O Ratio		1.4 (12)
	O-Reb		3.4 (6)
	D-Reb		6.1 (5)
Turner	Rebounds		7.6 (11)
	FG%		.585 (7)
	Blocks		2.2 (1)
	O-Reb		2.8 (10)
Young	Scoring		15.3 (12)
	FG%		.567 (10)
	Assists		4.7 (4)
	A/T.O Ratio		2.3 (4)

Senior guard Arike Ogunbowale is closing in on the Notre Dame all-time scoring record in her final season. First off, Ogunbowale surpassed the 2,000 career point milestone Dec. 16 vs. Binghamton, becoming the fifth Irish player to do so.

Ogunbowale enters Thursday's game with 2,108 career points, which also ranks fifth among all active DI players. Ogunbowale is just 249 points behind Skylar Diggins-Smith.

With wins over Gonzaga, Drake, Iowa and Marquette, the Irish boast four RPI top-25 victories. That number doubles the amount of RPI top-25 wins over the next highest Division I team.

Thursday's primetime matchup with No. 2 Louisville will be Notre Dame's second 1 vs 2 matchup of the season and eighth in program history. History has not sided well with the Irish, for their only win in a 1 vs 2 was back in 2001 when No. 2 Notre Dame defeated No. 1 UConn, 90-75 in the national semifinal.

In addition, this marks Notre Dame's first 1 vs 2 match-up not involving UConn since the Irish played at Baylor back on Nov. 20, 2011.

Junior guard Jackie Young has been highly efficient from the field this season, raising her shooting percentage to 56.7 percent. That number ranks 10th in the ACC and 32nd nationally, but more impressively, second nationally among just guards. Young only trails Villanova's guard Mary Gedaka, who is shooting 64.3 percent.

Notre Dame made program history after leaving Georgia Tech with the 76-55 victory on Jan. 6. By halftime, the Irish were a perfect 17 assists on 17 made field goals and then finished the game with 30 assists on 34 made fields. That .882 assist/field goals made efficiency rating ranks as the best all-time in program history for a game in which they've tallied at least 30 field goals.

When only looking at games in which teams have made at least 30 field goals and 30 assists, Notre Dame's .882 mark leads the country for a single game this season.

	Team	ACC Record	Overall Record
	Notre Dame	2-0	14-1
	Louisville	2-0	14-0
	NC State	2-0	15-0
	Syracuse	2-0	13-2
	Miami	2-0	14-3
	Florida State	2-0	14-1
	Georgia Tech	1-1	11-4
	Duke	0-2	8-6
	North Carolina	0-2	9-7
	Virginia	0-2	6-9
	Virginia Tech	0-2	13-2
	Pitt	0-1	9-6
	Boston College	0-2	11-4
	Clemson	1-1	10-5
	Wake Forest	0-1	9-5

[illegible][illegible]



NCAA NATIONAL RANKINGS

Statistic	Nat'l Rank	Conf Rank	Value	National Leader	Value
A/TO Ratio	9	1	1.42	Oregon	1.97
Assists/Game	6	1	20.1	Baylor	23.3
Blocks/Game	27	1	5.1	South Carolina	7.6
D-Reb/Game	25	3	29	Baylor	35
FG%	2	1	.526	Oregon	.526
Free Throw Attempts	6	1	342	Arkansas St	376
Free Throws Made	2	1	252	Indiana	258
Fouls/Game	19	2	13.9	UConn	11.7
Rebound Margin	13	2	10.1	Baylor	19.8
Rebounds/Game	27	2	43.47	Troy	51.23
Scoring Margin	6	1	25.6	Mississippi State	37.7
Scoring Offense	3	1	89.1	Oregon	92.4
Statistic	Player	Nat'l Rank	Value	National Leader	Value
A/TO Ratio	Jackie Young	41	2.33	Melinda Trimmer, Youngstown St.	4.93
Blocks/game	Brianna Turner	26	2.20	Channon Fluker, CSUN	3.80
FG Attempts	Arike Ogunbowale	10	252	Kierra Anthony, La Tech	278
FG Made	Arike Ogunbowale	4	123	Megan Gustafson, Iowa	143
FG%	Jessica Shepard	17	.605	Megan Gustafson, Iowa	.711
	Brianna Turner	23	.585		
	Jackie Young	32	.567		
Final Points	Arike Ogunbowale	5	331	Kierra Anthony, La Tech	366
FT Attempts	Arike Ogunbowale	27	86	Lexi Klabo, North Dakota	128
FT Made	Arike Ogunbowale	26	66	Lexi Klabo, North Dakota	112
Points/Game	Arike Ogunbowale	10	22.1	Megan Gustafson, Iowa	26.8
Rebounds/Game	Jessica Shepard	49	9.5	Kristine Anigwe, California	13.9

IRISH HOT SHOOTING STREAK

Count it up, the Irish have recorded six consecutive games shooting over 50 percent from the field. As a result, Notre Dame has raised its field goal percentage from .489 to .526, which ranks second in the country.

55.7 percent vs Binghamton
69.8 percent vs WKU
59.7 percent at Marquette
61.4 percent vs Lehigh
52.3 percent vs Pitt
54.8 percent at Georgia Tech

More from WKU game -- the Irish shot 80.8 percent in the first half, which tied for the third best shooting performance in a half all-time. It marked the best since the Irish shot 80.8 percent in the second half at Xavier, way back on Jan. 25, 1990. Notre Dame finished the game with a .698 field goal percentage, which also ranked third all time. It marked the best shooting performance in a game since the Irish shot 70.2 percent (all-time

mark) at Mercer on Dec. 30, 2011.

REASON FOR HOT SHOOTING STREAK

Look no further than the fact that the Irish have recorded six straight games in which they have dished out 24 or more assists, totaling 158 in that span. Notre Dame now averages 20.1 assists per game, which leads the ACC and ranks sixth in the nation. Individually, Jackie Young leads the way, averaging 4.7 assists/game, followed closely by Marina Mabrey with her 4.5.

Jessica Shepard has dished out 17 assists over the last three games. Ogunbowale just recorded a career high 12 assists at Georgia Tech (1/6), doubling her previous career best. Lastly, Mabrey is averaging 6.0 assists over the last six games.

SPREADING THE WEALTH

When you mix the high percentage shooting with the high assist total, you get our next stat. In Notre Dame's last game (at Georgia Tech), all five starters reached

double-digit points. It marked the second time the feat had been achieved in three games, and the fifth overall time this season. The other instances were Iowa, UConn and Binghamton.

MABREY HEATING UP

Since Dec. 16, Mabrey has been on quite the roll, getting into her prime season form. Over the last six games, Mabrey has averaged 15.7 points on 59.0 percent - including 14-for-30 from three-point range aka 46.7 percent. She has also averaged 6.0 assists and 2.2 steals.

In addition, in three of said games, Mabrey has recorded all three of her 20-point scoring games, including her season high of 21 set vs Binghamton.

BLOCK PARTY

Graduate student Brianna Turner is turning up the heat in the block department. Turner tied her season high of four blocks for the second straight game at Marquette (12/22), marking the fourth overall time this season. Turner then followed that up with three blocks against Lehigh, three blocks against Pitt, then two at Georgia Tech. Thus, Turner has totaled 16 blocks over the last five games.

Turner is now averaging 2.2 blocks/game, which leads the ACC and ranks 26th in the nation. Furthermore, Turner is chasing Ruth Riley's all-time mark of 370 at Notre Dame, currently in second place with 296.

AP FEMALE ATHLETE OF THE YEAR RUNNER-UP

At the close of the 2018 calendar year, the Associated Press named Serena Williams as its Female Athlete of the Year. Arike Ogunbowale was named the second runner-up behind Simone Biles, but ahead of Chloe Kim and Katie Ledecky.

POWERING UP AGAINST RANKED FOES

After earning an 87-63 victory at No. 19 Marquette on Dec. 22, the Irish moved to 4-1 against top-25 opposition. That alone is a great start to the season, but then you see that Notre Dame is averaging more points in those ranked games at an impressive 91.0 ppg, with a scoring margin of +14.8. Furthermore, Ogunbowale, Young and Turner all possess higher scoring averages against ranked teams.

Last season, the Irish finished with 13 ranked wins, including 11 of which came away from home -- both stats led the nation. In addition, the Irish earned six victories against top-10 ranked teams.

THE 40TH MEMBER OF THE 1,000 POINT CLUB

On Jan. 3, Young became the 40th member of the program's 1,000 career point club, scoring 16 points against Pitt. Now that Young has reached the milestone, Notre Dame and Marquette are the only two schools in the country with five starters over 1,000



NOTRE DAME'S RECORD WHEN ...

Day of the Week

Sunday	3-1
Monday	1-0
Tuesday	
Wednesday	1-0
Thursday	3-0
Friday	2-0
Saturday	4-0

Time of Game

Day games (before 6 pm local time)	9-1
Night games (6 pm or later local time)	5-0

Location

Home games	7-1
Road games	4-0
Neutral site	3-0

Halftime Score

Leading at the half	13-0
Tied at the half	
Trailing at the half	1-1

Individual Scoring

Two or fewer double-figure scorers	
Three double-figure scorers	3-0
Four double-figure scorers	5-0
Five or more double-figure scorers	6-1

Rebounding margin

More rebounds than opponent	13-0
Same number of rebounds	
Fewer rebounds than opponent	1-1

Field goal shooting

Shot higher percentage than opponent	14-0
Shot same percentage as opponent	
Show lower percentage than opponent	0-1
Shot 45% or better	13-0
Shoot less than 45%	1-1
Hold opponent under 40%	10-0

Free-throw margin

Make more free-throws than opponent	13-0
Make same number of free-throws	1-0
Make fewer free-throws than opponent	0-1

Turnovers

Commit fewer turnovers	10-0
Commit same number of turnovers	1-0
Commit more turnovers	3-1

Uniform Combinations

White jerseys with blue trim	6-1
White jerseys with green trim	4-0
Blue jerseys	4-0

Miscellaneous

Vs. top-25	4-1
Vs. top-10	1-1
When ranked higher	14-1
When ranked lower	
On commercial tv	3-1
In overtime games	

Margin of Victory

1-5 points	
6-10 points	1-0
11-15 points	
16-20 points	4-1
21+ points	9-0

Month

November	7-0
December	5-1
January	2-0
February	
March	
April	

career points.

BIG-GAME JACKIE

The title says it all about junior guard Jackie Young. Last season, the Irish played 16 ranked opponents and in those games Young outperformed her season scoring average, with 16.6 points on 51.8 percent shooting, to go with her 6.8 rebounds and 3.5 assists against top-25 teams.

The trend of Big Game Jackie has carried over into the 2018-19 season. Against five ranked opponents this year, Young is averaging 18.0 points, 8.0 rebounds and 5.0 assists.

2,000 POINTS & 1,000 REBOUNDS

Note that Shepard's four-year career records would not count toward Notre Dame records due to the first two years being at Nebraska. Nonetheless, the senior is quickly approaching a very rare milestone in 2,000 career points and 1,000 career rebounds. Entering Thursday's game, Shepard boasts 1,921 points and 991 rebounds, which both rank 13th respectively among active D1 players.

The only Irish player to ever achieve this impressive feat was 2001 graduate Ruth Riley, who garnered 2,072 points and 1,007 rebounds.

PROTECTING THE HOUSE

Purcell Pavilion continues to be one of the toughest venues to play in women's hoops. Over the last 105 games at home, the Irish have only lost three times, with all three coming against UConn.

Notre Dame is 473-93 all-time inside Purcell Pavilion. The Irish have sold out Purcell Pavilion 54 times and boasts a 44-10 record in those instances.

Most notably, however, has been how dominant the Irish have been in league play at home. Notre Dame has won a school-record 51 consecutive home conference games, beginning with a 66-47 win over Providence on Feb. 14, 2012, in BIG EAST play.

GETTING TO THE LINE

The Irish continue to attack the basket and reach the charity stripe, ranking second in the country in made free-throws with 252 and sixth in attempts with 342.

Arike currently ranks 26th nationally in made free throws (66) and 27th in attempts (86).

SETTING THE TONE FOR ACC PLAY

In Notre Dame's ACC opener vs Pitt, the Irish routed the Panthers, 100-44. The Irish allowed just 14 first half points, marking the second fewest scored by an ACC opponent since joining the league at the start of the 2013-14 season -- the fewest was 11 first half points by Virginia Tech in 2016. In addition, the Irish defense posted new season lows in points allowed and opponent shooting percentage (.266).

REACHING THE CENTURY MARK

Speaking of the win over Pitt, it marked the fifth time in which the Irish reached triple digits in a win:

- 100-44 win vs Pitt on Jan. 3
- 103-53 win vs Binghamton on Dec. 16
- 105-71 win vs No. 14 Iowa on Nov. 29
- 101-77 win vs No. 15 DePaul on Nov. 17
- 103-58 win vs Harvard on Nov. 9

TWO-TIME ACC POTW FOR THE FIRST TIME

In 2018, Ogunbowale was named an All-American, an Ann Meyers Drysdale Award finalist, the Final Four's Most Outstanding Player and the ACC Female Athlete of the Year. With all those accolades under her belt, Ogunbowale still achieved a career first on Dec. 23, earning a second ACC Player of the Week award in the same season.

Ogunbowale picked up her fifth career ACC weekly honor, previously winning just once in each of her last three seasons, and again this year after she helped the Irish knock off then No. 15 DePaul in November.

Ogunbowale tallied 16 points and four assists in Notre Dame's 103-53 victory over Western Kentucky before returning to her hometown of Milwaukee to help the Irish knock off No. 19 Marquette, 87-63. In her homecoming game, Ogunbowale tied her career high of 32 points, converting 13-of-21 from the field. The senior scored Notre Dame's first 11 points of the third quarter, before finishing with 15 for the period.



GAME BY GAME STARTING LINEUPS

DATE	OPPONENT	LINEUP					RECORD
11/9	Harvard	Nixon	Ogunbowale	Young	Shepard	Turner	1-0
11/12	Penn	Nixon	Ogunbowale	Young	Shepard	Turner	2-0
11/17	DePaul	Nixon	Ogunbowale	Young	Shepard	Turner	3-0
11/22	Gonzaga	Prohaska	Ogunbowale	Young	Shepard	Turner	1-0
11/23	Drake	Prohaska	Ogunbowale	Young	Patterson	Turner	1-0
11/24	Oregon St	Mabrey	Ogunbowale	Young	Shepard	Turner	1-0
11/29	Iowa	Mabrey	Ogunbowale	Young	Shepard	Turner	2-0
12/2	UConn	Mabrey	Ogunbowale	Young	Shepard	Turner	2-1
12/8	Toledo	Mabrey	Ogunbowale	Young	Shepard	Turner	3-1
12/16	Binghamton	Mabrey	Ogunbowale	Young	Shepard	Turner	4-1
12/19	WKU	Mabrey	Ogunbowale	Young	Shepard	Turner	5-1
12/22	Marquette	Mabrey	Ogunbowale	Young	Shepard	Turner	6-1
12/30	Lehigh	Mabrey	Ogunbowale	Young	Shepard	Turner	7-1
1/3	Pitt	Mabrey	Ogunbowale	Young	Shepard	Turner	8-1
1/6	Georgia Tech	Mabrey	Ogunbowale	Young	Shepard	Turner	9-1
1/10	Louisville						
1/13	Wake Forest						
1/16	Virginia Tech						
1/20	Boston College						
1/24	Tennessee						
1/27	UNC						
1/31	Clemson						
2/3	Georgia Tech						
2/7	Miami						
2/10	FSU						
2/13	Boston College						
2/18	NC State						
2/21	Duke						
2/25	Syracuse						
3/3	Virginia						

Season/Career Start Totals

Player	2018-19	Career	Streak
Brianna Turner	15	114	15
Arike Ogunbowale	15	89	78
Jackie Young	15	53	53
Jess Shepard	14	52	10
Marina Mabrey	10	86	10
Jordan Nixon	3	3	0
Abby Prohaska	2	2	2
Danielle Patterson	1	1	0

Record When Starting

Player	2018-19	Career
Arike Ogunbowale	14-1	81-8
Jackie Young	14-1	49-4
Brianna Turner	14-1	107-7
Jess Shepard	13-1	48-4
Marina Mabrey	9-1	78-8
Jordan Nixon	3-0	3-0
Abby Prohaska	2-0	2-0
Danielle Patterson	1-0	1-0

THREE OF THE TOP 15

To help emphasize how dynamic the Irish scoring is this season, simply take a look at the top-15 scorers in the ACC and you'll find three Irish players among them. Young ranks 12th at 15.3 points/game, Shepard 10th at 15.4 and Ogunbowale leads the league at 22.1 points. In fact, Ogunbowale's scoring ranks 10th in the country.

Speaking of trios, the Irish also boast three players in the country's top-50 for shooting percentage: Shepard ranks 17th nationally at 60.5 percent, Turner is 23rd at 58.5 percent and Young is 32nd at 56.7 percent.

SHEPARD TIES CONSECUTIVE FG STREAK RECORD

Stretching from her final shot at Toledo into her first two shots at Marquette, Shepard made 17 consecutive field goals which tied Carey Poor's record set back in March of 1994.

Against Binghamton, Shepard went 8-for-8 from the field. It marked the first time in four seasons an Irish player shot 8-for-8 from the field (or better). Shepard then followed that for a 6-for-6 night against WKU.

SHEPARD ACTIVE ON BOARDS

Shepard posted a 15-point, 18-rebound, double-double at Marquette (12/22). Her 18 rebounds marked her highest rebound total in an Irish uniform and was just two shy of her career high set at Nebraska. The performance also marked her second 15+ point, 15+ rebound performance of the season.

Prior, Shepard achieved a 16-rebound, 15-point double-double at No. 15 DePaul. It was the first 15-point, 15-rebound, performance since Brianna Turner (29/18) at North Carolina on Jan. 15, 2015.

GAME OF RUNS

Basketball is a game of runs, and the Irish have achieved success by not allowing a single 10-0 run by any opponent yet this season. In fact, Notre Dame leads its opposition, 16-0, in that category. Notre Dame first posted its longest run of the season vs Binghamton on Dec. 16 with 21 straight.

Then the Irish matched it twice vs Pitt on Jan. 3, recording 21-0 runs in both the first and second quarters.

DOUBLE DIGIT SCORING STREAK

Scoring leader Arike Ogunbowale is 15-for-15 this season in reaching double-digit points, and has gone 36 straight games when dating back to last season (vs Louisville on Jan. 11, 2018). Of those 36 straight games in double figures, 23 have been of 20-plus points.

Shepard's career high streak of 12 straight games came to a close vs Pitt on Jan. 3. If you include the end of last season, that was 21 straight games for Shepard.



CONSECUTIVE THREE STREAK COMES TO A CLOSE

Dating back to last season, Mabrey had hit a three-pointer in 24 straight games, before a 0-4 night from three at Marquette (12/22) closed the streak. The 24 straight games ranked second all-time at Notre Dame, behind leader Beth (Morgan) Cunningham's 35.

DOUBLE-DOUBLES BY A GUARD

Jackie Young has made an elite list in the lore of Notre Dame guards. After netting her second double-double on the season at Toledo (12/8), Young is up to seven in her career. That number ties Beth Morgan and Danielle Green for fifth most by a guard. Jewell Loyd sits in fourth at 8. Lindsay Schrader holds the top spot with 17.

20-POINT STREAK

After shattering the Notre Dame single season record for 20-point games with 25 last year, Ogunbowale is back at it again and then some. The senior started the year with a career best seven straight games with 20 or more points. No other player in the country started with seven consecutive games. The seven straight also set a new Notre Dame record, previously held by '97 grad Katryna Gaither, who earned six straight in the 1996-97 season.

The Milwaukee native is now up to 10 on the year, which leads all players in the ACC.

Furthermore, Ogunbowale now has 43 career games with 20-plus points, passing Ruth Riley's 37 for fourth all-time. Next up is Skylar Diggins-Smith at No. 3 with 45.

30-POINT RECORD

After dropping a career high tying 32 points at No. 19 Marquette on Dec. 22, Ogunbowale has four 30-point games on the year, which leads all ACC players.

Ogunbowale is also up to eight 30-point games in her career, which surpasses Jewell Loyd for the all-time mark at ND. Ogunbowale is also now tied with Loyd for most in a single season with four.

WELCOME BACK MARINA MAB(THREE)

After missing the first five games due to a leg injury, Marina Mabrey made an impact in her first game back. Facing No. 9 Oregon State in the Vancouver Showcase title game, Mabrey knocked down a game-changing three with the game tied at 77-all with 3:43 left, all leading to an Irish 91-81 victory.

After a three trey performance at Toledo, Mabrey has surpassed 200 career treys. Her now 216 threes rank fifth all-time. Next up is her sister Michaela at 228.

1ST HALF ATTACK

Ogunbowale leads the attack in the first half, averaging

12.7 points alone in the first two quarters. In fact, the senior has reached as high as 19 points by halftime twice this season. .

SHADES OF THE COMEBACK KIDS

The biggest trait of last year's championship squad was its ability to come back, posting seven double-digit come-from-behind wins. Fast forward to Nov. 24 vs No. 9 Oregon State and the Irish erased a 14-point deficit in the second quarter to win 91-81. Notre Dame scored 50 second half points to charge the rally, receiving 20-point scoring games from Ogunbowale, Young and Turner, while Shepard boasted a double-double with 17 points, 10 rebounds.

TURNER THE KEY

The title says it all - when Turner starts, the Irish are 107-7. That .939 starter winning percentage ranks as the best on the team.

A CLASS STUDENT-ATHLETE

Brianna Turner was selected as 1-of-30 candidates up for the 2019 Senior CLASS Award, which recognizes those student-athletes who excel in four areas: classroom, character, community and competition.

Turner earned her bachelor's degree in design in May 2018 with a cumulative GPA of 3.138 and major GPA of 3.433. Turner also studied abroad in South Africa for three weeks during the summer of 2016. There, she learned about the culture of the country and also examined the cultural, historical and social psychological effects of racism and apartheid in South Africa.

Turner has volunteered at Oaklawn Children's Campus working with preteen boys, while mentoring a young girl. Oaklawn's programs are designed to support youth in developing healthy coping skills so they can return to and live successfully in their community. Turner has volunteered once a week, only missing when basketball travel interfered.

On the court, Turner is one of just three players all-time at Notre Dame to be at least a three-time AP All-American.

PAINTING A WINNING PICTURE

The Irish have been painting a nice picture down low so far this season, outscoring its opposition, 791-408. Thus, Notre Dame is averaging an impressive 52.7 points in the paint per game compared to its opponent's 27.2. In fact, the Irish have tallied over 50 points in the paint in all but three games this season, including a season high of 62 at No. 19 Marquette on Dec. 22.

REMEMBER, REMEMBER, THE WINS IN NOVEMBER

The Irish capped a perfect 7-0 month of November with the 105-71 win over No. 14 Iowa. Notre Dame has now won 46 straight games in the month of November and

PRESEASON ALL-ACC

BLUE RIBBON PANEL	COACHES PANEL
All-ACC	All-ACC
Arike Ogunbowale, ND	Arike Ogunbowale, ND
Jessica Shepard, ND	Jessica Shepard, ND
Brianna Turner, ND	Brianna Turner, ND
Marina Mabrey, ND	Marina Mabrey, ND
Asia Durr, Louisville	Asia Durr, Louisville
Janelle Bailey, UNC	Janelle Bailey, UNC
Paris Kea, UNC	Paris Kea, UNC
Tiana Mangakahia, Syracuse	Tiana Mangakahia, Syracuse
Taylor Emery, VT	Taylor Emery, VT
Elisa Penna, Wake Forest	Elisa Penna, Wake Forest
Player of the Year	Player of the Year
Arike Ogunbowale, ND	Arike Ogunbowale, ND
Newcomer Watch List	Newcomer Watch List
Jordan Nixon, ND	Jordan Nixon, ND
Kiah Gillespie, FSU	Elizabeth Dixon, GT
Elizabeth Balogun, GT	Elizabeth Balogun, GT
Beatrice Mompremier, Miami	Beatrice Mompremier, Miami
Emily Engstler, Syracuse	Emily Engstler, Syracuse

is 49-1 over the past eight seasons.

SPARK OFF THE BENCH

Coach McGraw credited two important sparks off the bench after the big 101-77 win at No. 15 DePaul: Abby Prohaska and Danielle Patterson. Prohaska tallied four points, four assists, zero turnovers and four steals in 26 minutes of play. More importantly, Prohaska's plus-minus of +25 was the highest of any Irish player in the win. Meanwhile, Patterson posted a career game with highs in points (14), made field goals (5) and blocks (3).

STARTING FIVE WATCH LISTS

The Naismith Basketball Hall of Fame and Women's Basketball Coaches Association released its preseason watch lists for each end of the year positional awards known as the 'Naismith Starting Five.' In unprecedented fashion, each of the five Irish starters were named to each of the 20-player watch lists for their respective positions.

Marina Mabrey -- Nancy Lieberman
Arike Ogunbowale -- Ann Meyers Drysdale
Jackie Young -- Cheryl Miller
Jessica Shepard -- Katrina McClain
Brianna Turner -- Lisa Leslie

No other program in the country even had four players on the watch lists. Meanwhile, six different teams



boasted three: UConn, Duke, Maryland, Oregon, Texas and Baylor.

In addition, the Naismith Trophy, Wooden Award and Wade Trophy Watch Lists had the exact same results, with all five Irish starters named.

ACC/B1G CHALLENGE

With an emphatic 105-71 win over No. 14 Iowa, the Irish moved to 6-0 in the ACC/B1G Challenge. Overall, the ACC owns nine challenge titles (9-0-3) since its inception in 2007.

RETURNING SCORING

The Irish return four starters and their top-four scorers from last year in Ogunbowale, Mabrey, Shepard and Young. The foursome averaged a combined 65.3 points a year ago. When you factor in Brianna Turner's 2016-17 average of 15.3 ppg and the returning scoring total shoots up to 80.6 ppg. This marks the most for a returning starting five over the last 15 years.

PRESEASON AP ALL-AMERICAN

Recognizing her breakout performance last season and the senior's potential this season, the Associated Press named Arike Ogunbowale a Preseason All-American. Ogunbowale joined Oregon's Sabrina Ionescu, Louisville's Asia Durr, UConn's Katie Lou Samuelson and Baylor's Kalani Brown on the list.

"I think the biggest jump in Arike's game this summer has been in her leadership," Coach McGraw said. "She's done a tremendous job with the freshmen. She's encouraging; she's really leading. She's always led by example, now she's doing it vocally."

PRESEASON ACC HONORS

The Irish dominated the Preseason ACC honors with four of its starters occupying 10 of the All-ACC spots: Ogunbowale, Shepard, Turner and Mabrey.

Freshman Jordan Nixon, who was a 2018 McDonald's All-American, was one of five players chosen for the ACC Newcomer Watch List.

Lastly, Ogunbowale was picked by both the Blue Ribbon and the Coaches Panel for ACC Preseason Player of the Year.

REPEAT?

History will be against the Irish. In the NCAA era, only UConn (2013-16), Tennessee (2007-08) and Southern Cal (1983-84) have won at least two titles in a row.

If the Irish were to capture their third national title, they would sit in sole third place, behind Tennessee's eight and UConn's 11.

PHILLY HALL OF FAME

Coach McGraw was welcomed home on Nov. 1, when she was inducted into the Philadelphia Sports Hall of Fame. McGraw, former 76er Allen Iverson, former Eagle Brian Westbrook and former Phillie Phanatic Moyer highlighted the 2018 class.

NEW ERA WITH ROLFS ATHLETICS HALL

Notre Dame's new practice facility home, Rolfs Athletics Hall, boasts over 77,000-square feet of athletic training, strength and conditioning, practice courts and team offices for the Irish men's and women's teams. The teams have been able to use the practice courts since the start of October and the facility will be completed by December.



Leading Scorer

Arike Ogunbowale	8 (48)
Jackie Young	4 (12)
Marina Mabrey	3 (27)
Jess Shepard	1 (10)
Brianna Turner	0 (28)

Leading Rebounder

Jess Shepard	6 (28)
Brianna Turner	5 (59)
Arike Ogunbowale	3 (17)
Jackie Young	1 (14)
Marina Mabrey	0 (2)

Leader in Assists

Jackie Young	7 (18)
Arike Ogunbowale	4 (8)
Marina Mabrey	3 (26)
Abby Prohaska	1 (1)
Jess Shepard	1 (6)

20-Point Scoring Games

Opponents	6
Notre Dame	20
Arike Ogunbowale	10 (43)
Jackie Young	4 (15)
Marina Mabrey	3 (25)
Brianna Turner	2 (19)
Jessica Shepard	1 (38)

30-Point Scoring Games

Opponents	0
Notre Dame	4
Arike Ogunbowale	4 (8)
Jessica Shepard	0 (4)
Jackie Young	0 (1)
Brianna Turner	0 (1)

Tip-Offs Controlled

Opponents	3
Notre Dame	12
Brianna Turner	12-15

First Score

Opponents	3
Notre Dame	12
Jess Shepard	4
Arike Ogunbowale	3
Brianna Turner	2
Marina Mabrey	2
Danielle Patterson	1

Runs of 10 or Better

Opponents	0
Notre Dame	16

McBuckets (88th point at home)

Mikayla Vaughn	2
Jackie Young	1
Marina Mabrey	1
Brianna Turner	1
Danielle Patterson	1

Largest Halftime Lead

46 vs Pitt, 1/3/19

Largest Halftime Deficit

9 vs #9 Oregon State, 11/24/18

Largest Lead

62 vs Pitt (3rd Q, 2:35), 1/3/19

Largest Deficit

19 vs #2 UConn (4th Q, 1:43, 89-70), 12/2/18

Largest Deficit Overcome to Win

14 vs #9 Oregon State (2nd Q, 7:53, 38-24), 11/24/18

Largest Lead Given Out in Loss

2 vs #2 UConn (1st Q, 9:49, 2-0), 12/2/18

Most Consecutive Points

21 vs Binghamton, 12/16/18

21 (twice) vs Pitt, 1/3/19

Most Consecutive Points (Opponent)

9 vs #9 Oregon State, 11/24/18

Double-Figure Points

Player	2018-19	Career
Arike Ogunbowale	15	104
Jess Shepard	13	96
Brianna Turner	12	93
Jackie Young	12	51
Marina Mabrey	8	82
Mikayla Vaughn	3	4
Danielle Patterson	1	3
Katlyn Gilbert	1	1

Double-Figure Rebounds

Player	2018-19	Career
Jess Shepard	5	45
Brianna Turner	4	30
Jackie Young	2	9
Arike Ogunbowale	2	6
Marina Mabrey		1

5-5-5 Games

(aka "Stat Sheet Stuffers")

Player	2018-19	Career
Jackie Young	6	17
Arike Ogunbowale	3	10
Jess Shepard	4	10
Marina Mabrey	1	14
Brianna Turner		19

Double-Doubles

Player	2018-19	Career
Jess Shepard	4	44
Brianna Turner	4	25
Jackie Young	2	7
Arike Ogunbowale	2	6
Marina Mabrey	1	2

Triple-Doubles

Player	2017-18	Career
Marina Mabrey	0	1

Season Point Totals

Date	Opp.	Paint	OffT0	2ndCh	FBreak	Bench
11/9	Harvard	58/14	26/10	13/13	19/4	22/26
11/12	Penn	40/20	17/19	14/15	14/0	9/20
11/17	DePaul	58/26	22/32	12/7	29/11	20/17
11/22	Gonzaga	56/34	12/15	22/11	8/6	14/24
11/23	Drake	55/44	18/7	9/8	12/0	4/29
11/24	Oregon St	56/36	14/6	12/7	6/0	0/30
11/29	Iowa	54/38	22/13	32/12	19/6	18/4
12/2	UConn	38/42	3/11	10/17	13/10	2/5
12/8	Toledo	52/26	16/12	14/11	6/1	2/10
12/16	Binghamton	52/12	29/8	19/9	34/0	16/8
12/19	WKU	56/22	33/10	8/11	27/2	27/13
12/22	Marquette	62/30	22/13	10/11	25/15	11/5
12/30	Lehigh	54/26	22/14	10/6	16/3	14/30
1/3	Pitt	40/18	32/13	23/8	25/7	31/14
1/6	Georgia Tech	60/20	33/13	13/9	24/9	12/5

*Notre Dame is listed first in each column

Points in the Paint

	Total	Average
Notre Dame	791	52.7
Opponents	408	27.2

Points Off Turnovers

	Total	Average
Notre Dame	321	21.4
Opponents	205	13.7

Second Chance Points

	Total	Average
Notre Dame	221	14.7
Opponents	156	10.4

Fast Break Points

	Total	Average
Notre Dame	265	17.7
Opponents	82	5.5

Bench Scoring

	Total	Average
Notre Dame	202	13.5
Opponents	240	16.0



JORDAN NIXON

0

5-8 // FRESHMAN // GUARD

NEW YORK CITY, N.Y.

MARY LOUIS ACADEMY

UPDATE

- Named to the 2018 ACC Preseason Newcomer Watch List
- Started in the first three games in place of Mabrey, before missing five straight games due to concussion protocol. Averages 20.3 minutes.
- Averaging 3.3 assists over the last 3 games, with a 2.5 assist-to-turnover ratio. Now averaging 2.2 assists/game on the year.
- Posted her second best showing of the season vs Pitt (1/3), recording 9 points, which included a season best 4-for-4 day from the free-throw line, to go with her 4 assists and 2 steals.
- Grabbed a season high 5 rebounds vs Lehigh (12/30) to go with her 4 assists.
- Produced a career high 12 points on 4-for-6 shooting vs WKU (12/19). Nixon converted a career best 3-of-4 from three-point range.
- Recorded three steals for the second time this season vs Binghamton (12/16).
- Dished out a season best 5 assists vs Penn (11/12). Averages 2.0 assists per game.
- Shot 3-for-3 from the field at No. 15 DePaul, totaling 6 points.
- First true freshman point guard to start the season since Lindsay Allen back in 2013.
- Named Miss New York by the Basketball Coaches Association of New York (BCANY), which is given out to the top high school player in the state
- 2018 McDonald's All-American

SEASON BESTS

Pts: 12 (vs WKU, 12/19/18)
 Rebs: 5 (vs Lehigh, 12/30/18)
 FGM: 4 (vs WKU, 12/19/18)
 FGA: 6 (vs WKU, 12/19/18)
 3FGM: 3 (vs WKU, 12/19/18)
 3FGA: 4 (vs WKU, 12/19/18)
 FTM: 4 (vs Pitt, 1/3/19)
 FTA: 4 (vs Pitt, 1/3/19)
 Ast: 5 (vs Penn, 11/12/18)
 Blk:
 Min: 3, 2x (last vs Binghamton, 12/16/18)
 29 (vs Harvard, 11/9/18)

CAREER BESTS

Pts: 12 (vs WKU, 12/19/18)
 Rebs: 4 (vs Harvard, 11/9/18)
 FGM: 4 (vs WKU, 12/19/18)
 FGA: 6 (vs WKU, 12/19/18)
 3FGM: 3 (vs WKU, 12/19/18)
 3FGA: 4 (vs WKU, 12/19/18)
 FTM: 4 (vs Pitt, 1/3/19)
 FTA: 4 (vs Pitt, 1/3/19)
 Ast: 5 (vs Penn, 11/12/18)
 Blk:
 Stl: 3, 2x (last vs Binghamton, 12/16/18)
 Min: 29 (vs Harvard, 11/9/18)

SEASON

1 Double-Figure Scoring..... 1

CAREER

2018-19 GAME-BY-GAME STATISTICS

Date	Opponent	GS	MIN	FG-A	3P-A	FT-A	RB	PF	A	TO	ST	BL	PTS
11/9	Harvard	*	29	1-2	0-0	2-2	2-2-4	0	3	6	1	0	4
11/12	Penn	*	24	0-1	0-0	0-0	0-2-2	3	5	2	2	0	0
11/17	@ DePaul	*	24	3-3	0-0	0-0	0-2-2	3	3	6	3	0	6
11/22	vs Gonzaga	DNP											
11/23	vs Drake	DNP											
11/24	vs Oregon St	DNP											
11/29	Iowa	DNP											
12/2	UConn	DNP											
12/8	@ Toledo		12	0-1	0-0	0-0	0-0-0	0	0	0	0	0	0
12/16	Binghamton		28	0-5	0-2	0-0	0-2-2	1	1	2	3	0	0
12/19	Western Ky		23	4-6	3-4	1-1	0-3-3	1	0	9	1	0	12
12/22	@ Marquette		5	1-1	1-1	0-0	0-0-0	1	0	0	0	0	3
12/30	Lehigh		16	0-2	0-2	0-0	0-5-5	2	4	1	0	0	0
1/3	Pittsburgh		22	2-4	1-2	4-4	0-1-1	1	4	1	2	0	9
1/6	@ Georgia Tech		26	1-2	0-0	0-0	0-2-2	4	2	2	0	0	2
1/10	Louisville												
1/13	Wake Forest												
1/16	@ Virginia Tech												
1/20	Boston College												
1/24	@ Tennessee												
1/27	@ UNC												
1/31	@ Clemson												
2/3	Georgia Tech												
2/7	@ Miami												
2/10	FSU												
2/13	@ Boston College												
2/18	@ NC State												
2/21	Duke												
2/25	@ Syracuse												
3/3	Virginia												

NIXON'S OVERALL CAREER STATISTICS

MICK'S OVERALL CAREER STATISTICS																					
			Total		3-Point		F-Throws		Rebounds										Scoring		
Season	gp-gs	min/avg	fg-fga	pct	fg-fga	pct	ft-fa	pct	off	def	tot	avg	pf	fo	ast	to	blk	stl	pts	avg	
2018-19	10-3	209/20.9	12-27	.444	5-11	.455	7-7	1.000	2	19	21	2.1	16	0	22	29	0	12	36	3.6	
TOTAL	10-3	209/20.9	12-27	.444	5-11	.455	7-7	1.000	2	19	21	2.1	16	0	22	29	0	12	36	3.6	



MARINA MABREY

3

5-11 // SENIOR // GUARD

BELMAR, N.J.

MANASQUAN HS

UPDATE

• 2019 Nancy Lieberman Watch List // Wooden Award Watch List // Naismith Trophy Watch List // Wade Trophy Watch List // Preseason All-ACC honoree

• Missed first five games due to left quadricep injury.

• Dished out 36 assists over the last 6 games, averaging 6.0 assists in that span. She now averages 4.5 assists/game, which ranks 2nd on the team.

• In fact, Mabrey's numbers over the last 6 games: 15.7 points on 59.0 percent shooting; 14-of-30 from three-point range aka 46.7 percent; 6.0 assists and 2.2 steals. -- Three of said games, Mabrey scored at least 20 points.

• In the 18 games of her career in which Mabrey has scored 5 points or less, she has immediately bounced back in impressive fashion in the very next game, averaging 15.8 ppg in those instances.

• Mabrey's streak of consecutive games with a three came to an end at 24 after going 0-4 at Marquette on Dec. 22. The 24 straight games ranks 2nd all-time at ND, behind leader Beth (Morgan) Cunningham's 35.

• With 20 points against WKU (12/19), Mabrey secured back-to-back games with 20 or more points for the fourth time of her career. Her best stretch was three straight, set last season. Mabrey also notched a season high five steals and went a perfect 4-for-4 from three-point range.

• Earned a 21-point, 10-assist double-double vs Binghamton (12/16). The 10 assists tied her career high and was the first 10-assist performance since Lindsay Allen vs Ohio State on 3/24/17. The 21 points marked a season best.

• Made first start & appearance of the season vs No. 9 Oregon State in the Vancouver Showcase title game. Tied at 77-all under 4 minutes remaining, Mabrey converted a game-changing three which led to the 91-81 Irish victory. Mabrey made the most of her limited minutes, tallying nine points.

• Tallied 18 points, including three treys, in 23 minutes of action vs No. 14 Iowa (11/29).

• Connected on three or more treys in five games this season. Her 2.2 threes/game leads the team.

• Mabrey's 216 career treys ranks fifth all-time. Her sister Michaela holds the No. 4 spot with 228.

SEASON BESTS

Pts: 21 (vs Binghamton, 12/16/18)
Rebs: 6 (vs Lehigh, 12/30/18)
FGM: 9 (vs Binghamton, 12/16/18)
FGA: 14, 2x (last vs Pitt, 1/3/19)
3FGM: 4, 2x (last vs Pitt, 1/3/19)
3FGA: 9, 2x (last vs Pitt, 1/3/19)
FTM: 4 (vs Lehigh, 12/30/18)
FTA: 5 (vs Lehigh, 12/30/18)
Ast: 10 (vs Binghamton, 12/16/18)
Blk: 2 (vs Pitt, 1/3/19)
Stl: 5 (vs WKU, 12/19/18)
Min: 39 (vs UConn, 12/2/18)

CAREER BESTS

Pts: 29 (at Clemson, 2/16/17)
Rebs: 11 (last vs Virginia Tech, 2/22/18)
FGM: 11, 2x (last at Clemson, 2/16/17)
FGA: 19 (vs Marquette, 12/20/17)
3FGM: 6 (vs CSUN, 3/16/18)
3FGA: 12 (vs Marquette, 12/20/17)
FTM: 10 (at Valparaiso, 11/23/15)
FTA: 12 (vs Virginia, 1/29/17)
Ast: 10, 2x (last vs Binghamton, 12/16/18)
Blk: 3 (vs Duke, 3/5/17)
Stl: 12 (at Valparaiso, 11/23/15)
Min: 45, 2x (last vs UConn, 3/30/18)

KEY STATISTICS

POINTS	3PT FG%	ASSISTS	3PT FG
14.3	.407	4.5	2.2
4TH ON TEAM	LEADS TEAM	2ND ON TEAM	LEADS TEAM

SEASON

8.....	Double-Figure Scoring.....	82
3.....20+ points.....	25
0.....	Double-Figure Rebounds.....	1
1.....	Double-Figure Assists.....	2
1.....	Double-Doubles.....	3
0.....	Triple-Doubles.....	1

CAREER

2018-19 GAME-BY-GAME STATISTICS

Date	Opponent	GS	MIN	FG-A	3P-A	FT-A	RB	PF	A	TO	ST	BL	PTS
11/9	Harvard		DNP										
11/12	Penn		DNP										
11/17	@ DePaul		DNP										
11/22	vs Gonzaga		DNP										
11/23	vs Drake		DNP										
11/24	vs Oregon St	*	19	3-7	1-4	2-3	0-1-1	3	2	1	1	0	9
11/29	Iowa	*	23	6-13	3-9	3-4	0-1-1	0	5	1	2	0	18
12/2	UConn	*	39	4-13	1-6	2-2	0-4-4	4	1	2	0	1	11
12/8	@ Toledo	*	34	4-7	3-5	0-0	0-2-2	1	1	3	1	1	11
12/16	Binghamton	*	23	9-14	2-5	1-3	0-0-0	1	10	0	1	0	21
12/19	Western Ky	*	25	7-9	4-4	2-2	0-2-2	0	3	0	5	1	20
12/22	@ Marquette	*	29	1-7	0-4	1-2	1-2-3	4	5	3	2	0	3
12/30	Lehigh	*	29	6-8	3-4	4-5	1-5-6	0	7	4	1	1	19
1/3	Pittsburgh	*	23	8-14	4-9	0-0	1-3-4	2	7	1	3	2	20
1/6	@ Georgia Tech	*	32	5-9	1-4	0-2	0-2-2	0	4	1	1	0	11
1/10	Louisville												
1/13	Wake Forest												
1/16	@ Virginia Tech												
1/20	Boston College												
1/24	@ Tennessee												
1/27	@ UNC												
1/31	@ Clemson												
2/3	Georgia Tech												
2/7	@ Miami												
2/10	FSU												
2/13	@ Boston College												
2/18	@ NC State												
2/21	Duke												
2/25	@ Syracuse												
3/3	Virginia												

MABREY'S OVERALL CAREER STATISTICS

Season	gp-gs	min/avg	Total fg-fga	pct	3-Point fg-fga	pct	F-Throws ft-fga	pct	Rebounds off	def	tot	avg	pf	fo	ast	to	blk	stl	Scoring pts	avg
2015-16	35-2	662/18.9	127-247	.514	34-75	.453	85-104	.817	22	76	98	2.8	71	0	69	70	12	53	373	10.7
2016-17	37-36	1023/27.6	195-414	.471	75-196	.383	75-89	.843	33	77	110	3.0	68	0	92	54	18	55	540	14.6
2017-18	38-38	1303/34.3	193-421	.458	85-218	.390	78-91	.857	33	135	168	4.4	69	0	168	115	11	79	549	14.4
2018-19	10-10	274/27.4	53-101	.525	22-54	.407	15-23	.652	3	22	25	2.5	15	0	45	16	6	16	143	14.3
TOTAL	120-86	3262/27.2	568-1183	.480	216-543	.398	253-307	.824	91	310	401	3.3	223	0	374	255	47	203	1605	13.4



JACKIE YOUNG

5

6-0 // JUNIOR // GUARD

PRINCETON, IND.

PRINCETON COMMUNITY HS

UPDATE

• Vancouver Showcase All-Tournament Team // espnW Player of the Week (11/27) // 2019 Cheryl Miller Award Watch List // Naismith Trophy Watch List // Wooden Award Watch List // Wade Trophy Watch List

• With 16 points against Pitt on Jan. 3, Young became the 40th member of the program's 1,000-point club. Notre Dame and Marquette are now the only two schools in the country with five starters over 1,000 career points.

• Continues to be highly efficient from the field, shooting 56.7 percent, which ranks 10th in the ACC and 32nd in the nation. However, that number ranks 2nd nationally among guards only, trailing just Villanova's Mary Gedaka (.643).

• Leads the team averaging 4.7 assists/game, which ranks 4th in the ACC. In addition, Young's 2.3 assist-to-turnover ratio ranks 4th in the league and 41st in the nation.

• Speaking of assists, Young dished out a career best of 9 at Marquette on Dec. 22.

• Set a career high of nine straight games with double digit points before it came to an end vs WKU on Dec. 19.

• Tallied her fourth 20-plus point performance vs Binghamton with a 21-point effort. Young had 11 total 20-point performances in her first two years combined.

• After netting her second double-double on the year at Toledo (12/8), Young is up to 7 in her career. That number ties Beth Morgan and Danielle Green for fifth most by a guard. Jewell Loyd sits in fourth at 8.

• Big-Game Jackie continues in 2018 -- Last year, Young's scoring average against ranked teams was higher than her season average. This year, Young is averaging 18.0 points, 8.0 rebounds and 5.0 assists in ranked matchups.

• Grabbed a season high 4 steals vs Lehigh (12/30).

• Named to the Vancouver Showcase All-Tournament Team and the espnW Player of the Week after averaging 20.7 points, 6.0 rebounds and 3.3 assists, all while guiding the Irish to wins over Gonzaga, Drake and No. 9 Oregon State.

• Produced back-to-back 20-plus scoring games for the second time of her career with 48 combined points against Drake and Oregon State.

• Converted a career best three treys against No. 9 Oregon State (11/24), finishing with 23 points.

• Led the Irish in scoring at No. 15 DePaul with 28 points, including a career best 11-of-12 from the free-throw line. Also secured her first double-double on the year, reeling in 12 rebounds.

SEASON BESTS

Pts: 28 (at DePaul, 11/17/18)
Rebs: 12 (at DePaul, 11/17/18)
FGM: 8, 3x (last vs Oregon St, 11/24/18)
FGA: 15 (vs Drake, 11/23/18)
3FGM: 3 (vs Oregon St, 11/24/18)
3FGA: 5 (vs Oregon St, 11/24/18)
FTM: 11 (at DePaul, 11/17/18)
FTA: 12 (at DePaul, 11/17/18)
Ast: 9 (at Marquette, 12/22/18)
Blk: 2 (vs Drake, 11/23/18)
Stl: 4 (vs Lehigh, 12/30/18)
Min: 40 (vs UConn, 12/2/18)

CAREER BESTS

Pts: 32 (vs UConn, 3/30/18)
Rebs: 14 (at Michigan, 11/29/17)
FGM: 10, 4x (last vs UConn, 3/30/18)
FGA: 21, 2x (last vs Tennessee, 1/18/18)
3FGM: 3 (vs Oregon St, 11/24/18)
3FGA: 5 (vs Oregon St, 11/24/18)
FTM: 11 (at DePaul, 11/17/18)
FTA: 12 (at DePaul, 11/17/18)
Ast: 9 (at Marquette, 12/22/18)
Blk: 4 (vs DePaul, 12/17/17)
Stl: 6 (vs Valparaiso, 12/4/16)
Min: 43 (vs UConn, 3/30/18)

KEY STATISTICS

POINTS

15.3

3RD ON TEAM
12TH IN ACC

FG%

.567

10TH IN ACC
32ND IN NATION

ASSISTS

4.7

LEADS TEAM
4TH IN ACC

A/TO RATIO

2.3

4TH IN ACC
41ST IN NATION

SEASON

11	Double-Figure Scoring	50
4	20+ points	15
0	30+ points	1
2	Double-Figure Rebounding	9
2	Double-Doubles	7

CAREER

2018-19 GAME-BY-GAME STATISTICS

Date	Opponent	GS	MIN	FG-A	3P-A	FT-A	RB	PF	A	TO	ST	BL	PTS
11/9	Harvard	*	27	3-5	1-1	1-1	2-2-4	0	5	1	2	0	8
11/12	Penn	*	32	6-9	0-2	0-0	1-8-9	2	4	6	1	1	12
11/17	@ DePaul	*	35	8-14	1-2	11-12	2-10-12	2	2	5	1	1	28
11/22	vs Gonzaga	*	34	5-12	0-0	4-5	3-2-5	0	8	2	0	0	14
11/23	vs Drake	*	34	8-15	1-3	8-9	1-3-4	2	5	1	3	2	25
11/24	vs Oregon St	*	38	8-14	3-5	4-5	3-6-9	3	7	0	0	0	23
11/29	Iowa	*	35	6-11	0-0	3-4	4-3-7	1	6	0	2	1	15
12/2	UConn	*	40	6-14	0-0	6-10	2-5-7	3	1	3	0	1	18
12/8	@ Toledo	*	33	7-12	0-1	0-1	1-9-10	2	5	2	1	0	14
12/16	Binghamton	*	29	6-9	0-0	9-10	3-3-6	2	7	0	2	0	21
12/19	Western Ky	*	23	3-5	0-0	3-4	0-3-3	0	3	2	0	1	9
12/22	@ Marquette	*	36	3-6	0-0	0-0	0-5-5	2	9	1	1	0	6
12/30	Lehigh	*	29	5-7	0-0	0-0	0-5-5	1	4	2	4	0	10
1/3	Pittsburgh	*	20	6-9	0-0	4-7	3-3-6	0	2	2	1	0	16
1/6	@ Georgia Tech	*	22	5-8	0-2	0-0	2-2-4	3	2	3	1	1	10
1/10	Louisville												
1/13	Wake Forest												
1/16	@ Virginia Tech												
1/20	Boston College												
1/24	@ Tennessee												
1/27	@ UNC												
1/31	@ Clemson												
2/3	Georgia Tech												
2/7	@ Miami												
2/10	FSU												
2/13	@ Boston College												
2/18	@ NC State												
2/21	Duke												
2/25	@ Syracuse												
3/3	Virginia												

YOUNG'S OVERALL CAREER STATISTICS

JONES'S OVERALL CAREER STATISTICS																					
			Total		3-Point		F-Throws		Rebounds											Scoring	
Season	gp-gs	min/avg	fg-fga	pct	fg-fga	pct	ft-fa	pct	off	def	tot	avg	pf	fo	ast	to	blk	stl	pts	avg	
2016-17	33-0	707/21.4	88-190	.463	11-29	.379	53-66	.803	66	86	152	4.6	77	0	47	48	9	27	240	7.3	
2017-18	38-38	1308/34.4	212-408	.520	11-39	.282	116-147	.789	102	150	252	6.6	68	0	139	93	18	52	551	14.5	
2018-19	15-15	468/31.2	85-150	.567	6-16	.375	53-68	.779	27	69	96	6.4	23	0	70	30	8	19	229	15.3	
TOTAL	86-53	2483/28.9	385-748	.515	28-84	.333	222-281	.790	195	305	500	5.8	168	0	256	171	35	98	1020	11.9	



KATLYN GILBERT

10

5-10 // FRESHMAN // GUARD

INDIANAPOLIS, IND.

HERITAGE CHRISTIAN

UPDATE

- Played in first 7 games and averaged 15.9 minutes.
- Separated her right shoulder in win over No. 14 Iowa (11/29). Had surgery to repair damage in shoulder and will be out for the remainder of the season.
- Broke out against Gonzaga, pouring in 14 points on 5-of-8 shooting to go along with her 5 rebounds.
- Was disruptive on defense against Drake, nabbing a season best 4 steals.
- 2018 McDonald's All-American // 2018 Jordan Brand Classic

SEASON BESTS

Pts: 14 (vs Gonzaga, 11/22/18)
Rebs: 5 (vs Gonzaga, 11/22/18)
FGM: 5 (vs Gonzaga, 11/22/18)
FGA: 8 (vs Gonzaga, 11/22/18)
3FGM: 1,5x (last vs Iowa, 11/29/18)
FTM: 4 (vs Gonzaga, 11/22/18)
FTA: 5 (vs Gonzaga, 11/22/18)
Ast: 1 (vs Harvard, 11/9/18)
Blk: 1 (vs Gonzaga, 11/22/18)
Stl: 4 (vs Drake, 11/23/18)
Min: 33 (vs vs Gonzaga, 11/22/18)

CAREER BESTS

Pts: 14 (vs Gonzaga, 11/22/18)
Rebs: 5 (vs Gonzaga, 11/22/18)
FGM: 5 (vs Gonzaga, 11/22/18)
FGA: 8 (vs Gonzaga, 11/22/18)
3FGM: 1,4x (last vs Oregon St, 11/24/18)
FTM: 4 (vs Gonzaga, 11/22/18)
FTA: 5 (vs Gonzaga, 11/22/18)
Ast: 1 (vs Harvard, 11/9/18)
Blk: 1 (vs Gonzaga, 11/22/18)
Stl: 4 (vs Drake, 11/23/18)
Min: 33 (vs vs Gonzaga, 11/22/18)

KEY STATISTICS

POINTS	FG%	STEALS	MINUTES
3.6	.450	0.9	15.9

SEASON

1 Double-Figure Scoring..... 1

CAREER

1

2018-19 GAME-BY-GAME STATISTICS

Date	Opponent	GS	MIN	FG-A	3P-A	FT-A	RB	PF	A	TO	ST	BL	PTS
11/9	Harvard		16	1-3	0-1	0-1	1-1-2	1	1	0	0	0	2
11/12	Penn		8	0-0	0-0	2-2	1-1-2	2	0	1	1	0	2
11/17	@ DePaul		9	0-0	0-0	0-0	0-2-2	2	0	1	0	0	0
11/22	vs Gonzaga		33	5-8	0-1	4-5	2-3-5	2	0	2	1	1	14
11/23	vs Drake		26	2-7	0-1	0-0	0-3-3	1	0	2	4	0	4
11/24	vs Oregon St		14	0-1	0-1	0-0	0-1-1	3	1	1	0	0	0
11/29	Iowa		5	1-1	1-1	0-0	0-0-0	0	0	1	0	0	3
12/2	UConn	OUT FOR REMAINDER OF THE SEASON											
12/8	@ Toledo												
12/16	Binghamton												
12/19	Western Ky												
12/22	@ Marquette												
12/30	Lehigh												
1/3	Pittsburgh												
1/6	@ Georgia Tech												
1/10	Louisville												
1/13	Wake Forest												
1/16	@ Virginia Tech												
1/20	Boston College												
1/24	@ Tennessee												
1/27	@ UNC												
1/31	@ Clemson												
2/3	Georgia Tech												
2/7	@ Miami												
2/10	FSU												
2/13	@ Boston College												
2/18	@ NC State												
2/21	Duke												
2/25	@ Syracuse												
3/3	Virginia												

GILBERT'S OVERALL CAREER STATISTICS

			Total		3-Point		F-Throws		Rebounds										Scoring	
Season	gp-gs	min/avg	fg-fga	pct	fg-fga	pct	ft-fa	pct	off	def	tot	avg	pf	fo	ast	to	blk	stl	pts	avg
2018-19	7-0	111/15.9	9-20	.450	1-5	.200	6-8	.750	4	11	15	2.1	11	0	2	8	1	6	25	3.6
TOTAL	7-0	111/15.9	9-20	.450	1-5	.200	6-8	.750	4	11	15	2.1	11	0	2	8	1	6	25	3.6



BRIANNA TURNER

11

6-3 // GRAD STUDENT // FORWARD

PEARLAND, TEXAS

MANVEL

UPDATE

• 2019 Lisa Leslie Award Watch List // Wooden Award Watch List // Naismith Trophy Watch List // Wade Trophy Watch List // 2019 Senior CLASS Award candidate // Preseason All-ACC honoree

• Recorded 4 double-doubles on the year, which co-leads the team. Her 25 career double-doubles ranks 8th all-time. Katryna Gaither holds the top spot with 40.

• Active Career Leaders List: 14th in FG% with .617; 1st in Blocks with 296.

• Was named a 2019 Senior CLASS Award candidate for being an all-around student-athlete, excelling in classroom, character, community and competition.

• Averaging 2.2 blocks/game, which ranks 1st in the ACC and 26th in the country. She ranks second in ND history with 296 career blocks, sitting only behind Ruth Riley's 370 mark.

• Totaled 16 blocks in the last 5 games

• Last 5 games averages: 13.0 points, 6.8 rebounds, 3.2 blocks, 1.2 steals. All while shooting 66.7 percent.

• At Marquette (12/22), Turner recorded four blocks and earned her 2nd 20-point scoring game with 20 points on 9-of-12 shooting.

• Turner's .617 career field goal percentage ranks second all-time, behind Ruth Riley's .632.

• Came up big against No. 9 Oregon State, producing a season high 21 points on 9-of-13 shooting.

• Averaged 16.3 points, 8.3 rebounds at the Vancouver Showcase.

• Irish are 107-7 when Turner starts. The .939 starter winning percentage is the best on the team.

SEASON BESTS

Pts: 21 (vs Oregon St, 11/24/18)
Rebs: 11, 2x (last vs Iowa, 11/29/18)
FGM: 9, 2x (last at Marquette, 12/22/18)
FGA: 14 (vs Penn, 11/12/18)
3FGM: 3
3FGA: 7
FTM: 7 (vs Lehigh, 12/30/18)
FTA: 9 (vs Lehigh, 12/30/18)
Ast: 4 (vs Iowa, 11/29/18)
Blk: 4, 4x (last at Marquette, 12/22/18)
Stl: 3 (vs Georgia Tech, 1/6/19)
Min: 36 (vs Oregon St, 11/24/18)

CAREER BESTS

Pts: 31 (at Syracuse, 2/19/17)
Rebs: 18 (at UNC, 1/15/15)
FGM: 13, 2x (last at Syracuse, 2/19/17)
FGA: 18 (vs UMass Lowell, 11/14/14)
3FGM: 3
3FGA: 9
FTM: 9 (at UNC, 1/15/15)
FTA: 16 (at UNC, 1/15/15)
Ast: 4, 2x (last vs Iowa, 11/29/18)
Blk: 7, 4x (last vs Boston College, 2/23/17)
Stl: 4, 2x (at Boston College, 1/19/17)
Min: 40 (vs Louisville, 3/4/17)

KEY STATISTICS

POINTS	REBOUNDS	FG%	BLOCKS
12.9	7.6	.585	2.2
5TH ON TEAM	2ND ON TEAM	7TH IN ACC	LEADS ACC
	11TH IN ACC	23RD IN NATION	26TH IN NATION

SEASON

SEASON	CAREER
12..... Double-Figure Scoring.....	93
2..... 20+ points.....	18
4..... Double-Figure Rebounds.....	30
4..... Double-Doubles.....	25

2018-19 GAME-BY-GAME STATISTICS

Date	Opponent	GS	MIN	FG-A	3P-A	FT-A	RB	PF	A	TO	ST	BL	PTS
11/9	Harvard	*	21	3-7	0-0	5-8	3-8-11	1	3	3	0	1	11
11/12	Penn	*	29	8-14	0-0	0-0	5-5-10	1	2	0	0	1	16
11/17	@ DePaul	*	16	4-5	0-0	0-0	0-4-4	2	1	3	0	0	8
11/22	vs Gonzaga	*	29	7-13	0-0	2-2	4-6-10	2	1	1	1	2	16
11/23	vs Drake	*	26	5-12	0-0	2-4	2-4-6	2	0	1	2	4	12
11/24	vs Oregon St	*	36	9-13	0-0	3-4	3-6-9	1	0	2	2	2	21
11/29	Iowa	*	25	4-8	0-0	6-8	6-5-11	0	4	0	1	1	14
12/2	UConn	*	33	4-7	0-0	2-4	3-3-6	3	0	1	1	4	10
12/8	@ Toledo	*	28	3-8	0-0	1-1	2-2-4	2	0	3	0	1	7
12/16	Binghamton	*	22	5-7	0-0	4-5	5-4-9	1	0	1	0	1	14
12/19	Western Ky	*	22	4-4	0-0	2-2	0-5-5	0	3	0	1	4	10
12/22	@ Marquette	*	33	9-12	0-0	2-2	1-7-8	2	3	2	1	4	20
12/30	Lehigh	*	22	4-8	0-0	7-9	1-6-7	4	1	3	0	3	15
1/3	Pittsburgh	*	17	2-5	0-0	5-8	2-3-5	0	0	0	1	3	9
1/6	@ Georgia Tech	*	24	5-7	0-0	1-2	5-4-9	3	3	2	3	2	11
1/10	Louisville												
1/13	Wake Forest												
1/16	@ Virginia Tech												
1/20	Boston College												
1/24	@ Tennessee												
1/27	@ UNC												
1/31	@ Clemson												
2/3	Georgia Tech												
2/7	@ Miami												
2/10	FSU												
2/13	@ Boston College												
2/18	@ NC State												
2/21	Duke												
2/25	@ Syracuse												
3/3	Virginia												

TURNER'S OVERALL CAREER STATISTICS

			Total		3-Point		F-Throws		Rebounds										Scoring	
Season	gp-gs	min/avg	fg-fga	pct	fg-fga	pct	ft-fita	pct	off	def	tot	avg	pf	fo	ast	to	blk	stl	pts	avg
2014-15	36-35	921/25.6	202-310	.652	0-0	.000	92-152	.605	103	180	283	7.9	86	1	25	75	89	39	496	13.8
2015-16	29-29	783/27.0	169-285	.593	0-0	.000	85-133	.639	66	146	212	7.3	63	1	27	41	88	24	423	14.6
2016-17	35-35	1004/28.7	226-365	.619	0-0	.000	85-143	.594	93	154	247	7.1	73	1	38	65	86	28	537	15.3
2018-19	15-15	384/25.6	76-130	.585	0-0	.000	42-59	.712	42	72	114	7.6	24	0	21	22	33	13	194	12.9
TOTAL	115-114	3092/26.9	673-1090	.617	0-0	.000	304-487	.624	304	552	856	7.4	246	3	111	203	296	104	1650	14.3



ABBY PROHASKA 12

5-10 // FRESHMAN // GUARD

LIBERTY TOWNSHIP, OHIO

LAKOTA WEST

UPDATE

- Played in 14-of-15 games, averaging 15.9 minutes. Scored in 10-of-14 appearances.
- Averaging 1.9 assists/game. With 26 assists and 12 turnovers, Prohaska boasts a 2.2 assist-to-turnover ratio.
- Was the only Irish reserve to record positive plus-minus minutes at No. 19 Marquette (12/22) with +9.
- Tied her season high of 4 assists vs WKU (12/19).
- Sat out Binghamton (12/16) game due to illness.
- Made her first two collegiate starts at the Vancouver Showcase against Gonzaga and Drake.
- Recorded her first career block vs No. 14 Iowa on Nov. 29.
- Provided spark off the bench at No. 15 DePaul, tallying 4 points, 4 assists, 0 turnovers and 4 steals. Abby's Plus-Minus of +25 was the highest of any Irish player in the win.
- Played 19 minutes off the bench vs Penn and was +9 in Plus-Minus.
- Made Irish debut in season opener vs Harvard, collecting 6 points, 3 assists and 2 steals.
- 2018 Division I First Team All-Ohio

SEASON BESTS

Pts: 6 (vs Harvard, 11/9/18)
 Rebs: 5 (vs Harvard, 11/9/18)
 FGM: 1, 4x (last at Marquette, 12/22/18)
 FGA: 4 (vs Drake, 11/23/18)
 3FGM:
 3FGA: 1, 2x (last vs Pitt, 1/3/19)
 FTM: 4 (vs Harvard, 11/9/18)
 FTA: 4 (vs Harvard, 11/9/18)
 Ast: 4, 2x (last vs WKU, 12/19/18)
 Blk: 1 (vs Iowa, 11/29/18)
 Stl: 4 (at DePaul, 11/17/18)
 Min: 30 (vs Drake, 11/23/18)

CAREER BESTS

Pts: 6 (vs Harvard, 11/9/18)
 Rebs: 5 (vs Harvard, 11/9/18)
 FGM: 1, 4x (last at Marquette, 12/22/18)
 FGA: 4 (vs Drake, 11/23/18)
 3FGM:
 3FGA: 1, 2x (last vs Pitt, 1/3/19)
 FTM: 4 (vs Harvard, 11/9/18)
 FTA: 4 (vs Harvard, 11/9/18)
 Ast: 4, 2x (last vs WKU, 12/19/18)
 Blk: 1 (vs Iowa, 11/29/18)
 Stl: 4 (at DePaul, 11/17/18)
 Min: 30 (vs Drake, 11/23/18)

SEASON

0 Double-Figure Scoring..... 0

CAREER

2018-19 GAME-BY-GAME STATISTICS

Date	Opponent	GS	MIN	FG-A	3P-A	FT-A	RB	PF	A	TO	ST	BL	PTS
11/9	Harvard		18	1-3	0-0	4-4	1-4-5	1	3	1	2	0	6
11/12	Penn		19	0-2	0-0	0-0	1-0-1	4	2	1	1	0	0
11/17	@ DePaul		26	1-1	0-0	2-2	0-2-2	2	4	0	4	0	4
11/22	vs Gonzaga	*	16	0-0	0-0	1-2	1-0-1	3	1	2	1	0	1
11/23	vs Drake	*	30	1-4	0-0	1-2	2-2-4	3	3	1	0	0	3
11/24	vs Oregon St		12	0-2	0-0	0-0	1-0-1	3	3	0	0	0	0
11/29	Iowa		16	0-2	0-0	2-2	3-0-3	0	0	2	0	1	2
12/2	UConn		2	0-0	0-0	0-0	0-0-0	0	0	0	0	0	1
12/8	@ Toledo		15	0-1	0-0	0-0	0-2-2	0	1	0	0	0	0
12/16	Binghamton		DNP										
12/19	Western Ky		14	0-1	0-1	0-0	0-2-2	1	4	1	1	0	0
12/22	@ Marquette		12	1-1	0-0	0-0	0-0-0	2	3	1	0	0	2
12/30	Lehigh		14	1-1	0-0	2-2	0-1-1	1	0	0	0	0	4
1/3	Pittsburgh		22	0-3	0-1	2-2	0-2-2	0	2	3	2	0	2
1/6	@ Georgia Tech		5	0-0	0-0	0-0	0-0-0	0	0	0	0	0	0
1/10	Louisville												
1/13	Wake Forest												
1/16	@ Virginia Tech												
1/20	Boston College												
1/24	@ Tennessee												
1/27	@ UNC												
1/31	@ Clemson												
2/3	Georgia Tech												
2/7	@ Miami												
2/10	FSU												
2/13	@ Boston College												
2/18	@ NC State												
2/21	Duke												
2/25	@ Syracuse												
3/3	Virginia												

PROHASKA'S OVERALL CAREER STATISTICS

				Total		3-Point		F-Throws				Rebounds								Scoring	
Season	gp-gs	min/avg	fg-fga	pct	fg-fga	pct	ft-fta	pct	off	def	tot	avg	pf	fo	ast	to	blk	stl	pts	avg	
2018-19	14-2	222/15.9	5-21	.238	0-2	.000	14-16	.875	9	15	24	1.7	20	0	26	12	1	11	24	1.7	
TOTAL	14-2	222/15.9	5-21	.238	0-2	.000	14-16	.875	9	15	24	1.7	20	0	26	12	1	11	24	1.7	

2018-19 NOTRE DAME BASKETBALL NOTES



NICOLE BENZ

20

5-8 // SOPHOMORE // GUARD

VALENCIA, CALIF.

WILLIAM S. HART HS

SEASON BESTS

Pts: 2, 3x (last vs Iowa, 11/29/18)
 Rebs: 3 (vs Harvard, 11/9/18)
 FGM: 1, 2x (last vs Iowa, 11/29/18)
 FGA: 2, 2x (last vs Drake, 11/23/18)
 3FGM: 1, 3x (last vs Binghamton, 12/16/18)
 3FGA: 2 (vs Harvard, 11/9/18)
 FTM: 2 (vs Harvard, 11/9/18)
 Ast: 1, 2x (last at Marquette, 12/22/18)
 Blk:
 Stl:
 Min: 10 (vs Binghamton, 12/16/18)

CAREER BESTS

Pts: 3 (vs UNC, 2/1/18)
 Rebs: 3 (vs Harvard, 11/9/18)
 FGM: 1, 3x (last vs Iowa, 11/29/18)
 FGA: 2, 5x (last vs Drake, 11/23/18)
 3FGM: 1 (vs UNC, 2/1/18)
 3FGA: 2, 2x (last vs Villanova, 3/18/18)
 FTM: 2 (vs Harvard, 11/9/18)
 FTA: 2 (vs Harvard, 11/9/18)
 Ast: 1, 2x (last at Marquette, 12/22/18)
 Blk:
 Stl:
 Min: 10 (vs Binghamton, 12/16/18)

UPDATE

• Was the third walk-on for the Irish for the 2017-18 championship season, where she made 13 appearances on the year.

• Started the 2018-19 season as a student-manager before receiving the call-up once again right before the season opener. Has since played in 11 games, averaging 3.5 minutes.

• Notched her first collegiate assist vs WKU on Dec. 19.

• Played a career high 10 minutes vs Binghamton (12/16), where she reeled in 2 rebounds.

• Recorded her 2nd career field goal at No. 15 DePaul on Nov. 17 and 3rd vs No. 14 Iowa on Nov. 29.

• Made her first pair of collegiate free throws in the season opener vs Harvard on Nov. 9. Also reeled in a career high three rebounds.

2018-19 GAME-BY-GAME STATISTICS

Date	Opponent	GS	MIN	FG-A	3P-A	FT-A	RB	PF	A	TO	ST	BL	PTS
11/9	Harvard	4	0-2	0-0	2-2	1-2-3	0	0	0	0	0	0	2
11/12	Penn	2	0-1	0-1	0-0	0-1-1	0	0	1	0	0	0	0
11/17	@ DePaul	1	1-1	0-0	0-0	0-0-0	0	0	0	0	0	0	2
11/22	vs Gonzaga	2	0-0	0-0	0-0	0-0-0	0	0	0	0	0	0	0
11/23	vs Drake	3	0-2	0-1	0-0	0-1-1	0	0	1	0	0	0	0
11/24	vs Oregon St	DNP											
11/29	Iowa	4	1-1	0-0	0-0	1-1-2	0	0	0	0	0	0	2
12/2	UConn	DNP											
12/8	@ Toledo	DNP											
12/16	Binghamton	10	0-1	0-1	0-0	0-2-2	0	0	0	0	0	0	0
12/19	Western Ky	6	0-0	0-0	0-0	0-1-1	0	1	0	0	0	0	0
12/22	@ Marquette	1	0-0	0-0	0-0	0-1-1	0	1	0	0	0	0	0
12/30	Lehigh	1	0-0	0-0	0-0	0-0-0	1	0	0	0	0	0	0
1/3	Pittsburgh	4	0-0	0-0	0-0	0-0-0	0	0	0	0	0	0	0
1/6	@ Georgia Tech	DNP											
1/10	Louisville												
1/13	Wake Forest												
1/16	@ Virginia Tech												
1/20	Boston College												
1/24	@ Tennessee												
1/27	@ UNC												
1/31	@ Clemson												
2/3	Georgia Tech												
2/7	@ Miami												
2/10	FSU												
2/13	@ Boston College												
2/18	@ NC State												
2/21	Duke												
2/25	@ Syracuse												
3/3	Virginia												

BENZ'S OVERALL CAREER STATISTICS

BRYN'S OVERALL CAREER STATS (18G)																					
			Total		3-Point		F-Throws		Rebounds											Scoring	
Season	gp-gs	min/avg	fg-fga	pct	fg-fga	pct	ft-fa	pct	off	def	tot	avg	pf	fo	ast	to	blk	stl	pts	avg	
2017-18	13-0	27/2.1	1-7	.143	1-7	.143	0-0	.000	3	6	9	0.7	1	0	0	1	0	0	3	0.2	
2018-19	11-0	38/3.5	2-8	.250	0-3	.000	2-2	1.000	2	9	11	1.0	1	0	2	2	0	0	6	0.5	
TOTAL	24-0	65/2.7	3-15	.200	1-10	.100	2-2	1.000	5	15	20	0.8	2	0	2	3	0	0	9	0.4	



DANIELLE COSGROVE 22

6-4 // FRESHMAN // FORWARD

HOLBROOK, N.Y.

SACHEM EAST

SEASON BESTS

Pts: 6 (vs Binghamton, 12/16/18)
 Rebs: 3 (vs Binghamton, 12/16/18)
 FGM: 2, 3x (last vs Pitt, 1/3/19)
 FGA: 5, 2x (last vs Binghamton, 12/16/18)
 3FGM: 2 (vs Binghamton, 12/16/18)
 3FGA: 4, 2x (last vs Binghamton, 12/16/18)
 FTM: 2 (vs WKU, 12/19/18)
 Ast: 3 (vs WKU, 12/19/18)
 Blk: 1 (vs Binghamton, 12/16/18)
 Min: 13 (vs Binghamton, 12/16/18)

CAREER BESTS

Pts: 6 (vs Binghamton, 12/16/18)
 Rebs: 3 (vs Binghamton, 12/16/18)
 FGM: 2, 3x (last vs Pitt, 1/3/19)
 FGA: 5, 2x (last vs Binghamton, 12/16/18)
 3FGM: 2 (vs Binghamton, 12/16/18)
 3FGA: 4, 2x (last vs Binghamton, 12/16/18)
 FTM: 2 (vs WKU, 12/19/18)
 Ast: 3 (vs WKU, 12/19/18)
 Blk: 1 (vs Binghamton, 12/16/18)
 Min: 13 (vs Binghamton, 12/16/18)

UPDATE

- Played in 11-of-15 games, averaging 6.1 minutes.
- Played double-digit minutes in back-to-back games the week of Dec. 16, tallying 11 points, 5 rebounds and 4 blocks in that span. Cosgrove collected a career best 3 blocks and 2 assists against WKU.
- Had her best game to date against Binghamton (12/16), posting season highs in minutes (13), points (6), rebounds (3) and made threes (2). Also collected her first collegiate block and steal.
- Knocked down her first three-pointer in win over No. 14 Iowa (11/29), tallying 3 points in 6 minutes.
- Made her Irish debut vs Penn (11/12), where she earned her first collegiate basket.
- Played 11 minutes vs Drake, where she collected her first collegiate rebound.
- 2018 Miss New York nominee // 2018 McDonald's All-America nominee

SEASON

0 Double-Figure Scoring 0

CAREER

0 Double-Figure Scoring 0

2018-19 GAME-BY-GAME STATISTICS

Date	Opponent	GS	MIN	FG-A	3P-A	FT-A	RB	PF	A	TO	ST	BL	PTS
11/9	Harvard	DNP											
11/12	Penn	7	1-3	0-0	0-0	0-0-0	1	0	1	0	0	0	2
11/17	@ DePaul	1	0-0	0-0	0-0	0-0-0	0	0	0	0	0	0	0
11/22	vs Gonzaga	2	0-1	0-1	0-0	0-0-0	2	0	0	0	0	0	0
11/23	vs Drake	11	0-3	0-3	0-0	0-1-1	1	0	1	0	0	0	0
11/24	vs Oregon St	DNP											
11/29	Iowa	6	1-5	1-4	0-0	0-1-1	1	0	0	0	0	0	3
12/2	UConn	DNP											
12/8	@ Toledo	1	0-0	0-0	0-0	0-0-0	0	0	0	0	0	0	0
12/16	Binghamton	13	2-5	2-4	0-0	1-2-3	1	0	1	1	1	1	6
12/19	Western Ky	11	2-3	1-2	0-0	0-2-2	0	2	1	0	3	5	
12/22	@ Marquette	DNP											
12/30	Lehigh	4	0-2	0-2	0-0	0-0-0	0	1	0	0	0	0	0
1/3	Pittsburgh	10	2-4	1-3	0-0	0-2-2	0	0	1	0	0	5	
1/6	@ Georgia Tech	DNP											
1/10	Louisville												
1/13	Wake Forest												
1/16	@ Virginia Tech												
1/20	Boston College												
1/24	@ Tennessee												
1/27	@ UNC												
1/31	@ Clemson												
2/3	Georgia Tech												
2/7	@ Miami												
2/10	FSU												
2/13	@ Boston College												
2/18	@ NC State												
2/21	Duke												
2/25	@ Syracuse												
3/3	Virginia												

COSGROVE'S OVERALL CAREER STATISTICS

Season	gp-gs	min/avg	Total		3-Point		F-Throws		Rebounds				Scoring			
			fg-fga	pct	fg-fga	pct	ft-fa	pct	off	def	tot	avg	pf	fo	ast	to
2018-19	11-0	67/6.1	8-26	.308	5-19	.263	0-0	.000	1	8	9	0.8	6	0	3	5
TOTAL	11-0	67/6.1	8-26	.308	5-19	.263	0-0	.000	1	8	9	0.8	6	0	3	5



ARIKE OGUNBOWALE 24

5-8 // SENIOR // GUARD

MILWAUKEE, WIS.

DIVINE SAVIOR HOLY ANGELS

UPDATE

• Vancouver Showcase MVP // Preseason AP All-American // 2019 Ann Meyers Drysdale Award Watch List // Wooden Award Watch List // Naismith Trophy Watch List // Wade Trophy Watch List // Preseason ACC Player of the Year // Two-time ACC Player of the Week (Nov. 19 & Dec. 23)

• Broke the ND single season record last year with 20.8 ppg. Arike is now averaging 22.1 ppg this season, which ranks 1st in the ACC & 10th in the nation. Her 331 total points ranks 5th in the country, while her 123 made field goals ranks 4th.

• After shattering the Notre Dame single season record of 20-point scoring games last season with 25, Ogunbowale tallied a career best seven straight to start the year. She was the only DI player in the country to start with seven in a row and also set a new ND career record, toppling '97 grad Katryna Gaither who achieved six straight to start the 96-97 season. Arike is now up to 10 on the season, which leads all ACC players.

• Ogunbowale is 15-for-15 this season in double-digit scoring and has gone 36 straight games when dating back to last season (vs Louisville on Jan. 11, 2018). Of those 35 straight games in double figures, 23 have been of 20-plus points.

• Arike has four 30-point games, which ranks first in the ACC, and ties Jewell Loyd for most in a single season at ND. Arike is up to 8 in her career which surpasses Loyd for the all-time mark.

• At Georgia Tech (1/6), Arike doubled her previous career high with 12 assists to go with her 13 points. It marked the most since Lindsay Allen dished out 13 vs Duke on March 5, 2017.

• In her return home to Milwaukee, Arike tied her career high of 32 points on 13-of-21 shooting. Arike scored the team's first 11 points of the third quarter before finishing with 15 in the period.

• Arike surpassed the 2,000 career point milestone against Binghamton on Dec. 16, becoming the 5th Irish player to do so. She joined Skylar Diggins-Smith, Beth (Morgan) Cunningham, Katryna Gaither and Ruth Riley.

• Chasing Skylar Diggins all-time scoring record of 2,357 career points -- Arike currently sits at 2,108 career points, just 249 back. Her 2,108 career points ranks 5th among active DI players and 4th at ND. Next up is No. 3 Katryna Gaither with 2,126.

• Named the Vancouver Showcase MVP. Averaged 24.0 points & 6.3 rebounds in wins over Gonzaga, Drake and No. 9 Oregon State.

• In both the Drake and DePaul games, Arike had 19 points by the half. She is averaging a team best 12.7 points in the first half this season.

• Earned her second double-double of the season with 13 points and a career best 11 rebounds vs Binghamton. The senior had just 4 double-doubles entering into her final year.

SEASON BESTS

Pts: 32 (at Marquette, 12/22/18)
Rebs: 11 (vs Binghamton, 12/16/18)
FGM: 13, 2x (last at Marquette, 12/22/18)
FGA: 22 (vs Oregon St, 11/24/18)
3FGM: 3, 2x (last vs Iowa, 11/29/18)
3FGA: 9 (vs Penn, 11/12/18)
FTM: 9 (vs Harvard, 11/9/18)
FTA: 10, 2x (last vs Oregon St, 11/24/18)
Ast: 12 (vs Georgia Tech, 1/6/19)
Blk: 1, 2x (last vs WKU, 12/19/18)
Stl: 3, 2x (last vs Oregon St, 11/24/18)
Min: 40 (vs Oregon St, 11/24/18)

CAREER BESTS

Pts: 32, 3x (last at Marquette, 12/22/18)
Rebs: 11 (vs Binghamton, 12/16/18)
FGM: 13, 3x (last at Marquette, 12/22/18)
FGA: 25 (at UConn, 12/3/17)
3FGM: 5, 5x (last vs Duke, 3/5/17)
3FGA: 10 (at UConn, 12/3/17)
FTM: 12 (vs Miami, 1/4/18)
FTA: 13 (vs Miami, 1/4/18)
Ast: 12 (vs Georgia Tech, 1/6/19)
Blk: 1, 12x (last vs WKU, 12/19/18)
Stl: 4, 3x (last vs UNC, 2/1/18)
Min: 45 (vs UConn, 3/30/18)

KEY STATISTICS

POINTS	FG MADE	FREE THROWS MADE	A/TO RATIO
22.1	123	66	1.6
1ST IN ACC	1ST IN ACC	1ST IN ACC	9TH IN ACC
10TH IN NATION	4TH IN NATION	26TH IN NATION	

SEASON

15.....	Double-Figure Scoring.....	104
10.....	20+ points.....	43
4.....	30+ points.....	8
2.....	Double-Figure Rebounding.....	6
1.....	Double-Figure Assists.....	1
2.....	Double-Doubles.....	6

CAREER

2018-19 GAME-BY-GAME STATISTICS

Date	Opponent	GS	MIN	FG-A	3P-A	FT-A	RB	PF	A	TO	ST	BL	PTS
11/9	Harvard	*	26	10-21	1-5	9-9	0-4-4	2	5	3	1	0	30
11/12	Penn	*	33	6-19	3-9	6-6	2-3-5	1	6	2	2	0	21
11/17	@ DePaul	*	34	8-19	1-5	7-8	1-4-5	3	3	5	2	0	24
11/22	vs Gonzaga	*	36	8-19	1-4	4-6	2-4-6	2	2	4	3	0	21
11/23	vs Drake	*	32	11-19	2-6	6-10	1-7-8	1	3	1	1	1	30
11/24	vs Oregon St	*	40	7-22	2-6	5-10	0-5-5	4	3	1	3	0	21
11/29	Iowa	*	34	13-21	3-5	1-2	2-2-4	1	2	3	1	0	30
12/2	UConn	*	38	6-18	0-6	5-6	2-8-10	4	5	1	0	0	17
12/8	@ Toledo	*	36	9-15	0-2	4-4	0-6-6	2	3	4	2	0	22
12/16	Binghamton	*	23	6-10	1-3	0-2	1-10-11	2	5	2	2	0	13
12/19	Western Ky	*	26	6-11	0-1	4-4	0-4-4	1	4	1	1	1	16
12/22	@ Marquette	*	36	13-21	1-3	5-5	0-2-2	1	3	2	2	0	32
12/30	Lehigh	*	28	8-11	2-3	5-5	0-1-1	2	1	3	1	0	23
1/3	Pittsburgh	*	19	7-9	2-2	2-3	0-3-3	0	3	3	2	0	18
1/6	@ Georgia Tech	*	34	5-17	0-4	3-6	0-3-3	1	12	2	2	0	13
1/10	Louisville												
1/13	Wake Forest												
1/16	@ Virginia Tech												
1/20	Boston College												
1/24	@ Tennessee												
1/27	@ UNC												
1/31	@ Clemson												
2/3	Georgia Tech												
2/7	@ Miami												
2/10	FSU												
2/13	@ Boston College												
2/18	@ NC State												
2/21	Duke												
2/25	@ Syracuse												
3/3	Virginia												

OGUNBOWALE'S OVERALL CAREER STATISTICS

		Total		3-Point		F-Throws		Rebounds											Scoring	
Season	gp-gs	min/avg	fg-fga	pct	fg-fga	pct	ft-fa	pct	off	def	tot	avg	pf	fo	ast	to	blk	stl	pts	avg
2015-16	35-0	676/19.3	143-330	.433	18-46	.391	94-131	.718	48	71	119	3.4	60	0	41	69	3	22	398	11.4
2016-17	37-36	1087/29.4	217-483	.449	64-141	.454	90-123	.732	41	135	176	4.8	68	0	69	57	8	43	588	15.9
2017-18	38-38	1305/34.3	291-657	.443	65-170	.382	144-181	.796	44	160	204	5.4	57	0	105	55	2	55	791	20.8
2018-19	15-15	479/31.9	123-252	.488	19-64	.297	66-86	.767	11	66	77	5.1	27	0	60	37	2	25	331	22.1
TOTAL	125-89	3547/28.4	774-1722	.449	166-421	.394	394-521	.756	144	432	576	4.6	212	0	275	218	15	145	2108	16.9



MIKAYLA VAUGHN 30

6-3 // SOPHOMORE // CENTER

PHILADELPHIA, PENN.

PAUL VI

SEASON BESTS

Pts: 12 (vs Harvard, 11/9/18)
Rebs: 6 (vs Harvard, 11/9/18)
FGM: 6 (vs Harvard, 11/9/18)
FGA: 8 (vs Binghamton, 12/16/18)
3FGM: 3
3FGA: 4
FTM: 4 (vs Binghamton, 12/16/18)
FTA: 4, 2x (last vs Pitt, 1/3/19)
Ast: 1, 3x (last vs Georgia Tech, 1/6/19)
Blk: 4 (vs Harvard, 11/9/18)
Stl: 2 (vs Penn, 11/12/18)
Min: 24 (vs Binghamton, 12/16/18)

CAREER BESTS

Pts: 12 (vs Harvard, 11/9/18)
Rebs: 7 (vs Mount, 11/11/17)
FGM: 6 (vs Harvard, 11/9/18)
FGA: 9 (vs Mount, 11/11/17)
3FGM: 3
3FGA: 4
FTM: 4 (vs Binghamton, 12/16/18)
FTA: 4, 2x (last vs Pitt, 1/3/19)
Ast: 3 (vs Mount, 11/11/17)
Blk: 4 (vs Harvard, 11/9/18)
Stl: 2, 2x (last vs Penn, 11/12/18)
Min: 24 (vs Binghamton, 12/16/18)

UPDATE

- Returned from season-ending injury from 2017-18. Eligible for ACC Rookie Awards for 2018-19 season.
- Played in all 15 games, averaging 10.5 minutes. Scored in 9-of-15 appearances.
- Last 3 games: 25 total points on 11-of-17 shooting with 11 rebounds and 3 steals
- Didn't enter the Georgia Tech (1/6) game until the 2nd half and still put up eight points on 4-of-7 shooting.
- Nearly netted a double-double against Binghamton tallying 10 points and eight rebounds - six points and four boards were totaled in the final quarter.
- Led team in blocks (4) in season opener vs Harvard. 1-of-4 Irish in double figures. Earned career bests in points (12), made FG's (6) and blocks (4)

SEASON

2..... Double-Figure Scoring.....3
0..... Double-Figure Rebounds.....0
0..... 20+ points0

CAREER

2018-19 GAME-BY-GAME STATISTICS

Date	Opponent	GS	MIN	FG-A	3P-A	FT-A	RB	PF	A	TO	ST	BL	PTS
11/9	Harvard	23	6-7	0-0	0-2	1-5-6	4	0	0	0	4	12	
11/12	Penn	15	1-2	0-0	1-2	2-1-3	0	0	0	2	0	3	
11/17	@ DePaul	3	0-0	0-0	0-0	0-1-1	0	1	2	0	0	0	
11/22	vs Gonzaga	12	0-1	0-0	0-0	0-0-0	1	0	0	0	1	0	
11/23	vs Drake	9	0-1	0-0	0-0	1-3-4	3	0	0	0	0	0	
11/24	vs Oregon St	2	0-0	0-0	0-0	0-0-0	0	0	0	0	0	0	
11/29	Iowa	6	1-1	0-0	2-2	1-1-2	5	0	0	0	1	4	
12/2	UConn	1	0-0	0-0	0-0	0-0-0	0	0	0	0	0	0	
12/8	@ Toledo	5	1-1	0-0	0-0	1-0-1	1	0	1	0	1	2	
12/16	Binghamton	24	3-8	0-0	4-4	5-3-8	2	0	4	1	0	10	
12/19	Western Ky	8	1-1	0-0	0-0	0-1-1	3	0	1	1	0	2	
12/22	@ Marquette	2	0-0	0-0	0-0	0-0-0	0	0	0	0	0	0	
12/30	Lehigh	18	4-6	0-0	0-0	1-2-3	4	1	1	1	0	8	
1/3	Pittsburgh	17	3-4	0-0	3-4	2-2-4	1	0	1	1	1	9	
1/6	@ Georgia Tech	12	4-7	0-0	0-0	1-3-4	0	1	0	1	0	8	
1/10	Louisville												
1/13	Wake Forest												
1/16	@ Virginia Tech												
1/20	Boston College												
1/24	@ Tennessee												
1/27	@ UNC												
1/31	@ Clemson												
2/3	Georgia Tech												
2/7	@ Miami												
2/10	FSU												
2/13	@ Boston College												
2/18	@ NC State												
2/21	Duke												
2/25	@ Syracuse												
3/3	Virginia												

VAUGHN'S OVERALL CAREER STATISTICS

Season	gp-gs	min/avg	Total fg-fga	pct	3-Point fg-fga	pct	F-Throws ft-fga	pct	Rebounds off	def	tot	avg	pf	fo	ast	to	blk	stl	Scoring pts	avg
2017-18	6-0	79/13.2	23-37	.622	0-0	.000	2-6	.333	14	12	26	4.3	11	0	4	8	7	3	48	8.0
2018-19	15-0	157/10.5	24-39	.615	0-0	.000	10-14	.714	15	22	37	2.5	24	1	3	10	8	7	58	3.9
TOTAL	21-0	236/11.2	47-76	.618	0-0	.000	12-20	.600	29	34	63	3.0	35	1	7	18	15	10	106	5.0

2018-19 NOTRE DAME BASKETBALL NOTES



JESSICA SHEPARD

32

6-4 // SENIOR // FORWARD

FREMONT, NEB.

NEBRASKA // FREMONT HS

UPDATE

• 2019 Katrina McClain Watch List // Wooden Award Watch List // Naismith Trophy Watch List // Wade Trophy Watch List // Preseason All-ACC honoree

• Nearly averaging a double-double on the year with 15.4 points and 9.5 rebounds, ranking 10th and 4th in the ACC, respectively. Shepard continues to be efficient from the field, leading the team at 60.5 percent, which ranks 17th in the nation.

• Led the Irish in scoring for the first time this season at Georgia Tech (1/6), totaling 19 points.

• Dished out 17 assists over the last three games, twice getting her season high of six.

• Reached double-digit points in the first 12 games played this season, setting a career best while in an Irish uniform. If you included the end of last season, that was 21 straight games in double digits.

• Dating back to her last shot at Toledo and into the start of the Marquette game, Shepard made 17 consecutive field goals which tied Carey Poor's ND record set back in 1994.

• Pitt (1/3) marked the first game in which Shepard had not made at least five field goals in a game.

• Earned a 15-point, 18-rebound, double-double at Marquette (12/22), as the latter ranks as her highest rebound total in an Irish uniform and just two shy of her career high set at Nebraska. Also marked her 2nd 15+ point, 15+ rebound performance of the season.

• Her previous was a 16-rebound & 15-point effort at No. 15 DePaul, which was the first 15-point, 15-rebound, performance since Brianna Turner (29/18) at North Carolina on Jan. 15, 2015

• Shepard went a perfect 8-for-8 from the field vs Binghamton (12/16), becoming the first Irish player to go 8-for-8 or better in a game since Taya Reimer (8-8) vs Louisville on Feb. 23, 2015.

• Recorded 3 straight games with a double-double from Nov. 17-24. Averaged 15.7 points and 13.3 rebounds, while connecting on 19-of-35 from the field (.543). Shepard recorded a season best five straight games with a double-double last year.

• Active Career Leaders List: Shepard's 44 double-doubles ranks 12th; her 1,921 points ranks 13th; her 991 rebounds ranks 13th.

• Keeping in mind that Shepard's first two seasons were at Nebraska, the senior is quickly approaching 2,000 career points and 1,000 career rebounds. The only Irish player to ever achieve this was 2001 graduate Ruth Riley, who garnered 2,072 points and 1,007 rebounds.

SEASON BESTS

Pts: 28 (vs Harvard, 11/9/18)
Rebs: 18 (at Marquette, 12/22/18)
FGM: 12 (vs Harvard, 11/9/18)
FGA: 16 (vs Harvard, 11/9/18)
3FGM: 1 (vs Oregon St, 11/24/18)
3FGA: 5 (vs Gonzaga, 11/22/18)
FTM: 7, 2x (last vs Oregon St, 11/24/18)
Asts: 6, 2x (last vs Georgia Tech, 1/6/19)
Blk: 2, 2x (last vs Georgia Tech, 1/6/19)
Stl: 3, 2x (last vs Binghamton, 12/16/18)
Min: 37 (vs Oregon St, 11/24/18)

CAREER BESTS

Pts: 39 (vs DePaul, 12/17/17)
Rebs: 20 (vs Michigan, 1/24/16)
FGM: 17 (vs DePaul, 12/17/17)
FGA: 27 (vs Ohio State, 2/16/17)
3FGM: 2, 8x (last vs Illinois, 3/1/17)
3FGA: 6 (vs Illinois, 1/15/17)
FTM: 11, 2x (last vs FSU, 3/3/18)
FTA: 20, 2x (last vs Michigan State, 2/26/17)
Asts: 7 (last vs CSUN, 3/16/18)
Blk: 6 (at Penn, 12/9/17)
Stl: 5 (vs Clemson, 1/21/18)
Min: 43 (vs UConn, 3/30/18)

KEY STATISTICS

POINTS	FG%	REBOUNDS	DOUBLE-DOUBLES
15.4	.605	9.5	4
2ND ON TEAM	5TH IN ACC	4TH IN ACC	
10TH IN ACC	17TH IN NATION	49TH IN NATION	

SEASON

13	Double-Figure Scoring	96
1	20+ points	38
0	30+ points	4
5	Double-Figure Rebounds	45
4	Double-Doubles	44

CAREER

2018-19 GAME-BY-GAME STATISTICS

Date	Opponent	GS	MIN	FG-A	3P-A	FT-A	RB	PF	A	TO	ST	BL	PTS
11/9	Harvard	*	26	12-16	0-0	4-6	3-5-8	0	4	1	1	1	28
11/12	Penn	*	26	8-13	0-0	1-3	1-7-8	3	2	3	2	1	17
11/17	@ DePaul	*	29	7-13	0-0	1-4	8-8-16	1	0	2	0	0	15
11/22	vs Gonzaga	*	26	5-11	0-0	5-7	3-11-14	0	1	3	1	1	15
11/23	vs Drake		DNP										
11/24	vs Oregon St	*	37	7-11	0-1	3-7	4-6-10	2	2	2	1	1	17
11/29	Iowa	*	27	5-10	0-0	0-0	3-5-8	3	4	2	3	0	10
12/2	UConn	*	35	6-13	0-0	1-2	3-5-8	4	2	1	0	0	13
12/8	@ Toledo	*	33	6-11	0-0	4-4	3-5-8	4	2	3	1	0	16
12/16	Binghamton	*	19	8-8	0-0	2-2	0-4-4	1	2	2	3	0	18
12/19	Western Ky	*	24	6-6	0-0	0-2	2-4-6	2	5	4	2	2	12
12/22	@ Marquette	*	35	7-12	0-0	1-2	7-11-18	2	2	2	0	0	15
12/30	Lehigh	*	29	6-10	0-0	2-3	3-4-7	3	6	2	1	0	14
1/3	Pittsburgh	*	17	1-8	0-0	4-4	6-5-11	1	5	1	0	0	6
1/6	@ Georgia Tech	*	33	8-10	0-0	3-5	1-6-7	3	6	2	0	2	19
1/10	Louisville												
1/13	Wake Forest												
1/16	@ Virginia Tech												
1/20	Boston College												
1/24	@ Tennessee												
1/27	@ UNC												
1/31	@ Clemson												
2/3	Georgia Tech												
2/7	@ Miami												
2/10	FSU												
2/13	@ Boston College												
2/18	@ NC State												
2/21	Duke												
2/25	@ Syracuse												
3/3	Virginia												

SHEPARD'S OVERALL CAREER STATISTICS - NOTRE DAME

			SHARKS OVERALL SEASON STATISTICS - 2018-2019																	
Season	gp-gs	min/avg	Total		3-Point		F-Throws		Rebounds				Scoring							
			fg-fga	pct	fg-fga	pct	ft-fa	pct	off	def	tot	avg	pf	fo	ast	to	blk	stl	pts	avg
2017-18	38-37	1112/29.3	244-432	.565	0-2	.000	106-156	.679	117	191	308	8.1	73	0	93	84	28	31	594	15.6
2018-19	14-14	392/28.0	92-152	.605	0-1	.000	31-51	.608	47	86	133	9.5	29	0	43	30	8	15	215	15.4
TOTAL	52-51	1504/28.9	336-584	.575	0-3	.000	137-207	.662	164	277	441	8.5	102	0	136	114	36	46	809	15.6

SHEPARD'S OVERALL CAREER STATISTICS - NEBRASKA

CHARLES EVERTS' SEASON AVERAGES																				
			Total		3-Point		F-Throws		Rebounds				Scoring							
Season	gp-gs	min/avg	fg-fga	pct	fg-fga	pct	ft-fa	pct	off	def	tot	avg	pf	fo	ast	to	blk	stl	pts	avg
2015-1	31-29	884/28.5	228-447	.510	0-2	.000	118-203	.581	96	170	266	8.6	65	1	59	108	20	19	574	18.5
2016-1	29-29	897/30.9	206-505	.408	28-89	.315	98-176	.557	69	215	284	9.8	75	3	54	102	7	15	538	18.6
TOTAL	60-58	1781/29.7	434-952	.456	28-91	.308	216-379	.570	165	385	550	9.2	140	4	113	210	27	34	1112	18.5

2018-19 NOTRE DAME BASKETBALL NOTES



DANIELLE PATTERSON 33

6-2 // SOPHOMORE // FORWARD

BROOKLYN, NEW YORK

THE MARY LOUIS ACADEMY

UPDATE

- Played in 12-of-15 games, averaging 13.0 minutes. Scored in 9-of-12 games played.
- Missed two games due to injured knee.
- Since returning from injury: 24 points on 11-of-17 shooting.
- Made her first career start vs Drake (11/23), reeling in 6 rebounds in 26 minutes of play.
- Career game at #15 DePaul with highs in points (14), made field goals (5) and blocks (3).
- Provided positive plus-minus minutes vs UConn (12/2) in 11 minutes of action. Knocked down 1-of-2 shots for 2 points.
- Coach McGraw has called Patterson 'our most improved player' over the summer. "She's just playing with a different mindset from last season. She's always been a hard worker and she's always in the gym, and that has definitely helped to give her the confidence."

SEASON BESTS

Pts: 14 (at DePaul, 11/17/18)
 Rebs: 6 (vs Drake, 11/23/18)
 FGM: 5 (at DePaul, 11/17/18)
 FGA: 8 (vs Drake, 11/23/18)
 3FGM: 3
 3FGA: 4
 FTM: 4 (at DePaul, 11/17/18)
 FTA: 4 (at DePaul, 11/17/18)
 Ast: 1, 2x (last vs Lehigh, 12/30/18)
 Blk: 3 (at DePaul, 11/17/18)
 Stl: 1
 Min: 26 (vs Drake, 11/23/18)

CAREER BESTS

Pts: 14 (at DePaul, 11/17/18)
 Rebs: 9 (vs ETSU, 11/24/17)
 FGM: 5 (at DePaul, 11/17/18)
 FGA: 8 (vs Drake, 11/23/18)
 3FGM: 3
 3FGA: 4
 FTM: 5 (vs Mount, 11/11/17)
 FTA: 8 (vs Mount, 11/11/17)
 Ast: 2 (at Georgia Tech, 1/7/18)
 Blk: 3 (at DePaul, 11/17/18)
 Stl: 2 (vs CSUN, 3/16/18)
 Min: 29 (vs Boston College, 1/14/18)

SEASON

1..... Double-Figure Scoring..... 3

CAREER

2018-19 GAME-BY-GAME STATISTICS

Date	Opponent	GS	MIN	FG-A	3P-A	FT-A	RB	PF	A	TO	ST	BL	PTS
11/9	Harvard		DNP										
11/12	Penn	3	0-1	0-0	0-0	0-0-0	0	0	0	0	0	0	0
11/17	@ DePaul	22	5-6	0-0	4-4	2-0-2	3	0	1	0	3	14	
11/22	vs Gonzaga	10	0-1	0-0	0-0	0-1-1	0	0	1	0	0	0	
11/23	vs Drake	*	26	4-8	0-0	0-0	3-3-6	0	0	0	0	0	8
11/24	vs Oregon St	2	0-0	0-0	0-0	0-0-0	0	0	0	0	0	0	
11/29	Iowa	16	2-6	0-0	0-0	1-3-4	0	0	0	0	1	4	
12/2	UConn	11	1-2	0-0	0-0	0-1-1	0	1	1	0	0	2	
12/8	@ Toledo		DNP										
12/16	Binghamton		DNP										
12/19	Western Ky	15	4-6	0-0	0-0	1-1-2	2	0	1	0	0	8	
12/22	@ Marquette	10	2-2	0-0	2-2	0-1-1	2	0	1	0	0	6	
12/30	Lehigh	6	1-2	0-0	0-0	0-0-0	1	1	1	0	0	2	
1/3	Pittsburgh	24	3-5	0-0	0-0	1-1-2	0	0	0	0	1	6	
1/6	@ Georgia Tech	10	1-2	0-0	0-0	0-0-0	0	0	1	0	0	2	
1/10	Louisville												
1/13	Wake Forest												
1/16	@ Virginia Tech												
1/20	Boston College												
1/24	@ Tennessee												
1/27	@ UNC												
1/31	@ Clemson												
2/3	Georgia Tech												
2/7	@ Miami												
2/10	FSU												
2/13	@ Boston College												
2/18	@ NC State												
2/21	Duke												
2/25	@ Syracuse												
3/3	Virginia												

PATTERSON'S OVERALL CAREER STATISTICS

Season	gp-gs min/avg		Total		3-Point		F-Throws		Rebounds				Scoring			
			fg-fga	pct	fg-fga	pct	ft-fga	pct	off	def	tot	avg	pf	fo	ast	pts avg
2017-18	33-0	411/12.5	38-78	.487	0-0	.000	19-38	.500	27	37	64	1.9	15	0	8	95 2.9
2018-19	12-1	156/13.0	23-41	.561	0-0	.000	6-6	1.000	8	11	19	1.6	8	0	2	52 4.3
TOTAL	45-1	567/12.6	61-119	.513	0-0	.000	25-44	.568	35	48	83	1.8	23	0	10	147 3.3

2018-19 NOTRE DAME BASKETBALL NOTES



MAUREEN BUTLER 40

6-1 // SENIOR // FORWARD

LIVONIA, MICH.

DEARBORN DIVINE CHILD

SEASON BESTS

Pts: 2 (vs Penn, 11/12/18)
Rebs: 2 (vs Harvard, 11/9/18)
FGM: 1 (vs Penn, 11/12/18)
FGA: 3 (vs Binghamton, 12/16/18)
3FGM: 3FGA:
FTM: 2 (vs Harvard, 11/9/18)
FTA: 2 (vs Binghamton, 12/16/18)
Blk: 1 (vs Binghamton, 12/16/18)
Stl: 1 (vs Harvard, 11/9/18)
Min: 10 (vs Harvard, 11/9/18)

CAREER BESTS

Pts: 4 (vs Virginia, 3/2/18)
Rebs: 2, 3x (last vs Harvard, 11/9/18)
FGM: 2 (vs Virginia, 3/2/18)
FGA: 3 (vs Binghamton, 12/16/18)
3FGM: 3FGA:
FTM: 2 (vs Virginia Tech, 2/22/18)
FTA: 2, 3x (last vs Harvard, 11/9/18)
Ast: 2 (vs Binghamton, 12/16/18)
Blk: 1 (vs Binghamton, 12/16/18)
Stl: 1 (vs Harvard, 11/9/18)
Min: 10 (vs Harvard, 11/9/18)

SEASON

0 Double-Figure Scoring..... 0

CAREER

2018-19 GAME-BY-GAME STATISTICS

Date	Opponent	GS	MIN	FG-A	3P-A	FT-A	RB	PF	A	TO	ST	BL	PTS
11/9	Harvard	10	0-1	0-0	0-2	1-1-2	0	0	0	1	0	0	0
11/12	Penn	1	1-1	0-0	0-0	1-0-1	0	0	1	0	0	0	2
11/17	@ DePaul	DNP											
11/22	vs Gonzaga	DNP											
11/23	vs Drake	3	0-1	0-0	0-0	1-0-1	1	0	0	0	0	0	0
11/24	vs Oregon St	DNP											
11/29	Iowa	3	0-2	0-0	0-0	0-0-0	0	0	0	0	0	0	0
12/2	UConn	DNP											
12/8	@ Toledo	2	0-0	0-0	0-0	0-0-0	0	0	0	0	0	0	0
12/16	Binghamton	9	0-3	0-0	0-0	1-0-1	2	2	0	0	1	0	0
12/19	Western Ky	4	0-1	0-0	0-0	0-0-0	1	0	0	0	0	0	0
12/22	@ Marquette	DNP											
12/30	Lehigh	2	0-0	0-0	0-0	0-0-0	0	0	0	0	0	0	0
1/3	Pittsburgh	6	0-0	0-0	0-0	0-1-1	1	1	0	0	0	0	0
1/6	@ Georgia Tech	1	0-0	0-0	0-0	0-0-0	0	0	0	0	0	0	0
1/10	Louisville												
1/13	Wake Forest												
1/16	@ Virginia Tech												
1/20	Boston College												
1/24	@ Tennessee												
1/27	@ UNC												
1/31	@ Clemson												
2/3	Georgia Tech												
2/7	@ Miami												
2/10	FSU												
2/13	@ Boston College												
2/18	@ NC State												
2/21	Duke												
2/25	@ Syracuse												
3/3	Virginia												

UPDATE

- Made appearances in 10 games, averaging 4.2 minutes.
- Picked up her first basket of the 2018-19 season vs Penn (11/12).
- Played a career best 10 minutes in the season opener, reeling in two rebounds and her first career steal.
- Picked up her first career assists and first career block against Binghamton (12/16)

BUTLER'S OVERALL CAREER STATISTICS

COLLEGE CAREER STATISTICS																					
			Total		3-Point		F-Throws		Rebounds											Scoring	
Season	gp-gs	min/avg	fg-fga	pct	fg-fga	pct	ft-fga	pct	off	def	tot	avg	pf	fo	ast	to	blk	stl	pts	avg	
2017-18	20-0	47/2.4	6-9	.667	0-0	.000	3-4	.750	0	9	9	0.5	6	0	0	1	0	0	15	0.8	
2018-19	10-0	42/4.2	1-9	.111	0-0	.000	0-2	.000	4	2	6	0.6	5	0	3	1	1	1	2	0.2	
TOTAL	30-0	89/3.0	7-18	.389	0-0	.000	3-6	.500	4	11	15	0.5	11	0	3	2	1	1	17	0.6	



LAST TIME NOTRE DAME ...

SCORING

Player scored 25 points	See 30
Player scored 30 points	Arike Ogunbowale (32) at Marquette, 12/22/18
Player scored 35 points	Jessica Shepard (39) vs DePaul, 12/17/17
Player scored 40 points	Jewell Loyd (41) at DePaul, 12/10/14
Player came off bench and scored 20 points	Jackie Young (20), vs. Valparaiso, 12/4/16
Two players scored 20 points	Arike Ogunbowale (32) & Brianna Turner (20) at Marquette, 12/2/18
Three players scored 20 points	Arike Ogunbowale (21), Brianna Turner (21), Jackie Young (23) vs. Oregon State, 11/24/18 (Vancouver)
Three players scored 20 points/consecutive games	Arike Ogunbowale (30), Jessica Shepard (24), Marina Mabrey (23) vs CSUN, 3/16/18; Arike Ogunbowale (24), Jessica Shepard (25), Jackie Young (24) vs. Villanova, 3/18/18
Two players scored 25 points	Arike Ogunbowale (30) & Jackie Young (25) vs Drake, 11/23/18 (Vancouver)
Player scored 25 points/consecutive games	Arike Ogunbowale (27 vs. Georgia Tech, 2/11/18; 27 at Virginia, 2/15/18)
None in double figures	at Seton Hall, 2/8/04
One in double figures	Brianna Turner (25) vs. Duke, 1/26/17
Six in double figures	Arike Ogunbowale (13), Brianna Turner (14), Jessica Shepard (18), Mikayla Vaughn (10), Marina Mabrey (21), Jackie Young (21) vs Binghamton, 12/16/18
Seven in double figures	See eight in double figures
Eight in double figures	Devereaux Peters (20), Natalie Achonwa (19), Kaila Turner (14), Natalie Novosel (13), Skylar Diggins (11), Brittany Mallory (11), Kayla McBride (11) and Markisha Wright (11) vs. Pittsburgh, 1/17/12
ND scored 55 points/half	See 60
ND scored 60 points/half	60 (1st half) vs Pitt, 1/3/19
ND scored 50 points in both halves	50 (1st) & 53 (2nd) vs. Harvard, 11/9/18
ND scored 100 points/game	100 vs Pitt, 1/3/19
ND scored 100 points/home game	See 100 points
ND scored 100 points/neutral site	100 vs. Duquesne, 12/1/13 (@ Toronto, Ontario)
ND scored 100 points/conference game	100 vs Pitt, 1/3/19
ND scored fewer than 15 points/half	11 (1st half) at West Virginia, 1/13/08
ND scored fewer than 20 points/half	17 (1st half) at Connecticut, 4/1/18
ND scored fewer than 50 points/game	44 at Connecticut, 3/8/10

FIELD GOAL SHOOTING

Player made every shot from the field (min. 7)	Jessica Shepard (8-8) vs Binghamton, 12/16/18
ND shot 55 percent/consecutive games	55.7 (33-60) vs Binghamton, 12/16/18; 69.8 (37-53) vs WKU, 12/19/18; 59.7 (37-62) at Marquette, 12/22/18; 61.4 (35-57) vs Lehigh, 12/30/18
ND shot 60 percent/game	61.4 (35-57) vs Lehigh, 12/30/18
ND shot 65 percent/game	69.8 (37-53) vs WKU, 12/19/18
ND shot 70 percent/game	70.2 (40-57) at Mercer, 12/30/11
ND shot below 25 percent/game	24.5 (13-53) at West Virginia, 1/13/08
ND shot below 30 percent/game	29.7 (22-74) vs. Connecticut, 4/7/13 (@ New Orleans, La.)
ND shot below 35 percent/game	33.3 (21-63) vs. Connecticut, 4/7/15 (@ Tampa, Fla.)
ND shot below 35 percent/game and won	34.8 (23-66) vs. South Florida, 3/10/13 (@ Hartford, Conn.)
ND shot 65 percent/half	See 75
ND shot 70 percent/half	See 75
ND shot 75 percent or greater/half	.808 (21-26), 1st half vs WKU, 12/19/18
ND shot below 25 percent/half	24.0 (6-25), 1st half at Miami, 1/8/15
ND shot below 30 percent/half	29.4 (10-34), 2nd half vs UConn, 12/2/18

THREE-POINT SHOOTING

Player made 4 three-pointers/half	See 5/half
Player made 5 three-pointers/half	Marina Mabrey (1st half) vs Texas A&M, 3/24/18 (Spokane, Wash.)
Player made 5 three-pointers	See 7
Player made 6 three-pointers	See 7
Player made 7 three-pointers	Marina Mabrey vs Texas A&M, 3/24/18 (Spokane, Wash.)
Player made 8 three-pointers	Sheila McMillen vs. St. John's, 2/28/98 (@ Piscataway, N.J.)
Player attempted 10 three-pointers	Marina Mabrey (11) vs Texas A&M, 3/24/18 (Spokane, Wash.)
ND made 10 three-pointers	10 vs Texas A&M, 3/24/18 (Spokane, Wash.)
ND did not make a three-pointer	vs. Saint Joseph's (Pa.), 12/21/14
ND attempted 20 three-pointers	20 vs North Carolina, 2/1/18
ND shot 60 percent 3FG (min. 5 att.)	66.7 (8-12) vs WKU, 12/19/18

FREE-THROW SHOOTING

Player made 10 free-throws	Jackie Young (11) at DePaul, 11/17/18
Player made 15 free-throws	Jewell Loyd (15) at DePaul, 12/10/14
Player attempted 15 free-throws	Brianna Turner (16) at North Carolina, 1/15/15
Player made 10 for 10 or better	11-11 by Jessica Shepard vs Florida State, 3/3/18
ND shot 90 percent (min. 10 att.)	90.0 (9-10) at Toledo, 12/8/18
ND shot below 50 percent (min. 10 att.)	46.7 (7-15) at Georgia Tech, 1/6/19
ND made 30 free-throws	31 (attempted 46) vs. UCLA, 11/28/15 (@ Freeport, Bahamas)
ND made fewer than five FTs	4 (attempted 7) vs. Wake Forest, 1/5/17
ND attempted 40 free-throws	46 (made 31) vs. UCLA, 11/28/15 (@ Freeport, Bahamas)
ND attempted fewer than five FTs	2 (made 2) at Connecticut, 3/8/10

REBOUNDS

Player had 15 rebounds	Jessica Shepard (18) at Marquette, 12/22/18
Player had 20 rebounds	Natalie Achonwa (20) vs. South Florida, 3/10/13 (@ Hartford, Conn.)
Two players had double-figure rebounds	Jessica Shepard (14) and Brianna Turner (10) vs Gonzaga, 11/22/18 (Vancouver)
Three players had double-figure rebounds	Jessica Shepard (12), Kathryn Westbeld (10), and Jackie Young (10) vs Marquette, 12/20/17
ND had 50 rebounds	50 vs Gonzaga, 11/22/18 (Vancouver)
ND had 25 offensive rebounds	25 vs Iowa, 11/29/18
ND had 30 offensive rebounds	30 vs. Longwood, 12/28/11

DOUBLE-DOUBLES

Points & rebounds/3 consecutive games	See 5
Points & rebounds/4 consecutive games	See 5
Points & rebounds/5 consecutive games	Jessica Shepard (17/10) vs Florida State, 3/3/18; (23/10) vs Louisville, 3/4/18; (24/10) vs CSUN, 3/16/18; (25/10) vs Villanova, 3/18/18; (13/10) vs Texas A&M, 3/24/18 (Spokane, Wash.)
Points & assists	Marina Mabrey (21/10) vs Binghamton, 12/16/18
Rebounds & assists	Lindsay Allen (11/10) vs. Virginia 1/29/17
Points & assists/consecutive games	Niele Ivey (12/10) at Valparaiso, 11/17/00; (14/11) vs. Arizona, 11/20/00
Two players had double-doubles	Jessica Shepard (15p/14r) & Brianna Turner (16p/10r) vs Gonzaga, 11/22/18 (Vancouver)
Three players had double-doubles	Jessica Shepard (13p/12r), Kathryn Westbeld (13p/10r) and Jackie Young (10p/10r) vs Marquette, 12/20/17
20+ points and 10+ rebounds	Jackie Young (28/12) at DePaul, 11/17/18
30+ points and 10+ rebounds	Jackie Young (32p/11r) vs UConn, 3/30/18
40+ points and 10+ rebounds	Jewell Loyd (41/12) vs DePaul, 12/10/14
15 points and 15 rebounds	Jessica Shepard (15/18) at Marquette, 12/22/18
20 points and 20 rebounds	Natalie Achonwa (20/20) vs. South Florida, 3/10/13 (@ Hartford, Conn.)

TRIPLE DOUBLES (only six in school history)

Lindsay Allen (11p/11r/12a) at Chattanooga, 12/27/16
Marina Mabrey (18p/10a/12s) at Valparaiso, 11/23/15
Skylar Diggins (17p/10r/10a) at DePaul, 2/24/13
Skylar Diggins (22p/10r/11a) vs. Maryland, 3/27/12 (@ Raleigh, N.C.)
Sara Liebscher (17p/12r/10a) vs. Detroit, 2/15/90
Mary Gavin (11p/14a/10s) vs. Marquette, 1/31/87

ASSISTS

Player had 10 assists	Arike Ogunbowale (12) at Georgia Tech, 1/6/19
Player had 10 assists/consecutive games	Lindsay Allen (10 vs. Virginia, 3/3/17; 10 vs. Louisville, 3/4/17; 13 vs. Duke, 3/5/17, all @ Conway, S.C.)
Player had 15 assists	Mary Gavin (17) at Marquette, 2/28/87
ND had 30 assists	30 at Georgia Tech, 1/6/19
ND had fewer than 10 assists	8 vs Mississippi State, 4/1/18 (Columbus, Ohio)
ND had fewer than 5 assists	3 vs. Villanova, 3/8/09 (@ Hartford, Conn.)

BLOCKED SHOTS

Player blocked 5 shots	Brianna Turner (5) vs. Robert Morris, 3/17/17
Player blocked 6 shots	Jessica Shepard (6) at Penn, 12/9/17
Player blocked 7 shots	Brianna Turner (7) vs. Boston College, 2/23/17
Player blocked 10 shots	Amanda Barksdale (11) vs. Boston College, 2/10/02
ND blocked 10 shots	12 vs WKU, 12/19/18
ND blocked 15 shots	16 vs. Boston College, 2/10/02
ND blocked 0 shots	vs. Boston College, 1/14/18

STEALS

Player had 5 steals	Jackie Young (5) vs Georgia Tech, 2/11/18
Player had 10 steals	Marina Mabrey (12) at Valparaiso, 11/23/15
ND had 20 steals	21 vs. Saint Francis (Pa.), 12/31/12

TURNOVERS

ND committed 25 or more	25 at DePaul, 11/17/18
ND committed 25 or more and won	See 25 or more
ND committed 30 or more	30 at West Virginia, 2/22/11
ND committed 10 or fewer	7 vs Oregon State, 11/24/18 (Vancouver)
ND committed 10 or fewer/consecutive games	8 vs. Drake, 11/23/18; 7 vs. Oregon State, 11/24/18; 9 vs Iowa, 11/29/18; 9 vs UConn, 12/2/18
ND committed 5 or fewer	5 vs. Louisville, 3/4/17 (@ Conway, S.C.)

**MISCELLANEOUS**

Led team in points/rebounds/assists	Arike Ogunbowale (17p/10r/5a) vs UConn, 12/2/18
Hit "final minute" game-winning shot	Arike Ogunbowale (OT - 0:01), vs UConn, 3/30/18 (Columbus, Ohio); Arike Ogunbowale (4Q - 0:01), vs Mississippi State, 4/1/18 (Columbus, Ohio).
Four-point play	Madison Cable (9:52, 2nd half) vs. Wake Forest, 2/1/15
Made shot from midcourt or beyond	Arike Ogunbowale (50 feet at 0:00, 2nd half) vs. Louisville, 3/4/18
Played every minute	Jackie Young vs UConn, 12/2/18
Played more than 40 minutes	Marina Mabrey & Arike Ogunbowale vs UConn in OT (45 min), 3/30/18 (Columbus, Ohio)
ND rallied from 10-point deficit to win	Trailed Oregon State, 38-24 (7:53 - 2nd), won 91-81, 11/24/18 (Vancouver)
ND rallied from 15-point deficit to win	Trailed Mississippi State, 40-25 (6:41, 3rd), won 61-58, 4/1/18 (Columbus, Ohio)
ND rallied from 20-point deficit to win	Trailed vs Tennessee, 37-14 (7:03 - 2nd); won 84-70, 1/18/18
ND scored 20 straight points	21-0 run (twice) vs. Pitt, 1/3/19
ND scored 25 straight points	26-0 run vs. Valparaiso, 12/4/16
ND scored 30 straight points	36-0 run vs. Southeast Missouri State, 1/2/11

OVERTIME

ND played an OT game	vs UConn (W, 91-89), 3/30/18 (Columbus, Ohio)
ND played multiple overtimes	vs. Connecticut (W, 96-87, 3ot), 3/4/13
ND won an OT game	vs UConn (W, 91-89), 3/30/18 (Columbus, Ohio)
ND won an OT game at home	See played an OT game
ND won an OT game on the road	vs UConn (W, 91-89), 3/30/18 (Columbus, Ohio)
ND lost an OT game	vs. UCLA (L, 86-83, 2ot), 11/18/10

RANKINGS

Played the No. 1 team in the AP poll	vs UConn (W, 91-89), 3/30/18 (Columbus, Ohio)
Played the No. 1 team in the WBCA/USA Today poll	vs UConn (W, 91-89), 3/30/18 (Columbus, Ohio)
Defeated top-5 opponent	vs Mississippi State (W, 61-58), 4/1/18 (Columbus, Ohio)
Defeated top-10 opponent	vs #9 Oregon State (W, 91-81), 11/24/18 (Vancouver)
Defeated top-10 opponent at home	vs #6/7 Tennessee (84-70), 1/18/18
Defeated top-10 opponent on the road	See top-10 opponent
Defeated top-10 opponent by double digits	See top-10 opponent

SCORING MARGINS

ND won by 30-plus points on the road	34— ND 89, at Boston College 55, 2/18/18
ND won by 30-plus points at a neutral site	36— ND 83, vs Virginia, 4/7, 3/2/18
ND won by 40-plus points	See 50
ND won by 50-plus points	56 — ND 100, Pitt 44, 1/3/19
ND won by 60-plus points	60 — at ND 114, Valparaiso 54, 12/4/16
ND won by 70-plus points	75 — at ND 104, Holy Cross 29, 11/23/14
ND lost by 10-19 points	18 — UConn 89, ND 71, 12/2/18
ND lost by 10-19 at home	18 — UConn 89, ND 71, 12/2/18
ND lost by 10-19 points on the road	10 — at Connecticut 91, ND 81, 12/5/15
ND lost by 10-19 points at a neutral site	10 — Connecticut 63, ND 53, 4/7/15 (@ Tampa, Fla.)
ND lost by 20-29 points	21 — Connecticut 79, ND 58, 4/8/14 (@ Nashville, Tenn.)
ND lost by 20-29 points at home	25 — Connecticut 76, at ND 51, 3/1/10
ND lost by 20-29 points on the road	21 — at Connecticut 78, ND 57, 2/19/11
ND lost by 30-plus points	33 — at Louisville 100, ND 67, 1/11/18

LAST TIME OPPONENT ...**SCORING**

Player scored 25 points	Christyn Williams (28), UConn, 12/2/18
Player scored 30 points	Chennedy Carter (31), Texas A&M, 3/24/18 (Spokane, Wash.)
Player scored 35 points	Asia Durr (36), Louisville, 1/11/18
Two players scored 20 points	Chante Stonewall (21) & Ashton Millender (27), DePaul, 11/17/18
Three players scored 20 points	Channon Fluker (25), Destiny Brooks (24) and Tessa Boagni (23), CSUN, 3/16/18
Two players scored 25 points	Brittney Griner (32) and Odyssey Sims (25) at Baylor, 11/20/11
None in double figures	vs Pitt, 1/3/19
Five in double figures	Gabby Williams (12), Napheesa Collier (24), Kia Nurse (10), Katie Lou Samuelson (16) and Azura Stevens (19), vs UConn, 3/30/18 (Columbus, Ohio)
Six in double figures	Erika Davenport (19), Danielle King (12), Natisha Hiedeman (12), Allazia Blockton (20), Amani Wilborn (10), Isabelle Spingola (12), Marquette, 12/20/17
Scored 50 points/half	50 (1st half), vs Oregon State, 11/24/18
Scored 55 points/half	56 (1st half), at Louisville, 1/11/18
Scored 60 points/half	63 (2nd half), Northwestern State, 3/24/95 (@ Amarillo, Texas)
Scored 100 points/game	100, at Louisville, 1/11/18
Scored 100 points/non-conference game	103, Northwestern State, 3/24/95 (@ Amarillo, Texas)
Scored fewer than 15 points/half	14 (1st half), Pitt, 1/3/19
Scored fewer than 20 points/half	See 15

Scored fewer than 40 points/game

37, vs Clemson, 1/21/18

FIELD GOAL SHOOTING

Shot 55 percent/game	56.9 (29-51), vs Tennessee, 1/18/18
Shot 60 percent/game	65.1 (41-63), at Louisville, 1/11/18
Shot below 20 percent/game	18.6 (11-59), Holy Cross, 11/23/14
Shot below 25 percent/game	24.1 (14-58), at Georgia Tech, 1/2/17
Shot below 30 percent/game	26.6 (17-64), Pitt, 1/3/19
Shot 55 percent/half	58.8 (20-34), 1st half, vs Oregon, 3/26/18 (Spokane, Wash.)
Shot 60 percent/half	61.8 (21-34), 2nd half vs CSUN, 3/16/18
Shot 65 percent/half	68.2 (15-22), 2nd half by Texas A&M, 4/5/11 (@ Indianapolis, Ind.)
Shot 70 percent/half	71.8 (23-32), 1st half at Louisville, 1/11/18
Shot below 20 percent/half	19.4 (6-31), 1st half vs Pitt, 1/3/19
Shot below 25 percent/half	See 20

THREE-POINT SHOOTING

Player made 5 three-pointers	See 6
Player made 6 three-pointers	Taylor Ortellepp (6) at Boston College, 2/18/18
Player made 7 or more three-pointers	Ashton Millender (7) at DePaul, 11/17/18
Player attempted 10 three-pointers	Ashton Millender (12) at DePaul, 11/17/18
Made 10 three-pointers	10, at DePaul, 11/17/18
Did not make a three-pointer	Duke, 2/16/15
Attempted 30 three-pointers	40, Binghamton, 12/16/18
Shot 50 percent 3FG (min. 5 att.)	50.0 (10-20) vs Villanova, 3/18/18
Shot 60 percent 3FG (min. 5 att.)	64.7 (11-17) at Louisville, 1/11/18

FREE-THROW SHOOTING

Player made 10 free-throws	Destiny Slocum (10), vs Oregon State, 11/24/18
Player made 15 free-throws	Nok Duany (15) at Georgetown, 2/23/02
Player attempted 15 free-throws	Brittany Hrynko (16) at DePaul, 12/10/14
Player made 10 for 10 or better	Allisha Gray (10-10) at North Carolina, 1/15/15
Shot 90 percent (min. 10 att.)	93.3 (14-15), vs. Duke, 3/5/17 (@ Conway, S.C.)
Shot below 50 percent (min. 10 att.)	50.0 (6-12) vs Central Michigan, 11/11/16
Made 30 free-throws	32 (attempted 37), Illinois, 11/24/98
Made 5 or fewer FTs	3 (attempted 6), Pitt, 1/3/19
Attempted 40 free-throws	45 (made 28), at South Florida, 1/13/07
Attempted fewer than five FTs	3 (made 2) vs CSUN, 3/16/18

REBOUNDS

Player had 15 rebounds	Napheesa Collier (15) vs UConn, 12/2/18
Player had 20 rebounds	Wendy Scholtens (20) at Vanderbilt, 1/8/89
Two players had double-figure rebounds	Tessa Boagni (13) and Channon Fluker (11) vs CSUN, 3/16/18
Three players had double-figure rebounds	Aurora Adams (16), Brenda McCunn (11) and Paula Langseth (10), Hawaii, 3/22/81 (@ Anchorage, Alaska)
Had 50 rebounds	55, Syracuse, 1/21/16
Out-rebounded ND by 10 or more	10, at Louisville, 1/11/18

DOUBLE-DOUBLES

Points & rebounds	Erika Davenport (16/11), at Marquette, 12/22/18
Points & assists	Ashley Morrisette (23/10) vs. Purdue, 3/19/17
Points & steals	Alexis Jones (16/10) at Duke, 2/2/14
Two players had double-doubles	Tessa Boagni (23/13) and Channon Fluker (25/11), CSUN, 3/16/18
Three players had double-doubles	Mary Raese (24p/10r), Mary Westerwelle (11p/10r) and Netra McGrew (10p/10a), Idaho, 3/21/86 (@ Amarillo, Texas)
15 points and 15 rebounds	Napheesa Collier (16/15), UConn, 12/2/18
20 points and 10 rebounds	Megan Gustafson (26/10), Iowa, 11/29/18
20 points and 20 rebounds	Wendy Scholtens (29/20) at Vanderbilt, 1/8/89
30 points and 10 rebounds	Myisha Hines-Allen (31/12) at Louisville, 1/11/18

TRIPLE-DOUBLES

Points, rebounds, assists	Liad Suez-Karni (14p/10r/10a), Villanova, 2/7/06
Points, rebounds, steals	Diana Vines (23p/11r/12s) at DePaul, 1/24/89

ASSISTS

Player had 10 assists	Taryn McCutcheon (12), Michigan State, 12/6/17
Player had 15 assists	Veronica Pettry (16) at Loyola-Chicago, 2/18/89
Had 25 assists	25, at Louisville, 1/11/18
Had 30 assists	30 at Loyola-Chicago, 2/18/89
Had fewer than 10 assists	9, vs Mississippi State, 4/1/18 (Columbus, Ohio)
Had 5 or fewer assists	5, vs ETSU, 11/24/17 (@ Estero, Fla.)

BLOCKED SHOTS

Player blocked 5 shots	Jassany Williams (9) at Miami, 1/8/15
Blocked 10 shots	10 at Miami, 1/8/15



Blocked 15 shots
Blocked 0 shots

16 at Connecticut, 1/27/07
Binghamton, 12/16/18

STEALS

Player had 5 steals
Player had 6 steals
Player had 7 steals
Player had 10 steals
Had 15 steals
Had 20 steals

J'Kyra Brown, Virginia, 1/29/17
see player had seven steals
Kala Green, North Carolina A&T, 3/19/16
Alexis Jones at Duke, 2/2/14
16 at Duke, 2/2/14
24, Georgetown, 1/29/00

TURNOVERS

Player committed 10 turnovers
Committed 20 turnovers or more and won
Committed 25 turnovers or more
Committed 30 turnovers or more
Committed 35 turnovers or more
Committed 40 turnovers or more
Committed 10 turnovers or fewer
Committed 5 turnovers or fewer

Samantha Logic (11) at Iowa, 3/26/13
24, Connecticut, 12/6/14
28, vs Tennessee, 1/18/18
31 vs. Valparaiso, 12/4/16
35, Connecticut, 3/4/13
46, Akron, 11/11/11
7, UConn, 12/2/18
5, Oregon, 3/26/18 (Spokane, Wash.)

MISCELLANEOUS

Led team in points/rebounds/assists
Four-point play
Hit "final minute" game-winning shot
Played every minute
Played more than 40 minutes
Rallied from 10-point deficit to win
Led ND by 10 or more at halftime
Led ND by 15 or more at halftime
Led ND by 25 or more points

Mikayla Pivec (17/8/5), vs Oregon State, 11/24/18
Tori Jankoska (2:44, 1st quarter) at Michigan State, 12/20/16
Jamie Nared (0:11), Tennessee, 1/16/17
Natisha Hiedeman, Marquette, 12/22/18
Kia Nurse (45) & Katie Lou Samuelson (45), UConn, 3/30/18 (Columbus, Ohio)
at UConn, 12/3/17 (ND led by 12, 42-30, 1:15 left in 2nd quarter. UConn won, 80-71)
13 vs Mississippi State (30-17), 4/1/18 (Columbus, Ohio)
28 at Louisville (56-28), 1/11/18
44 at Louisville (92-48 at 7:32 in 4Q), 1/11/18



NOTRE DAME HIGHS

POINTS	105	IOWA (11/29/18)
	103	BINGHAMTON (12/16/18)
	103	HARVARD (11/09/18)
	101	at DePaul (11/17/18)
	100	PITTSBURGH (01/03/19)
FIELD GOALS MADE	40	IOWA (11/29/18)
	39	BINGHAMTON (12/16/18)
FIELD GOAL ATTEMPTS	81	IOWA (11/29/18)
	72	vs Drake (11/23/18)
FIELD GOAL PERCENTAGE	.698 (37-53)	WESTERN KY. (12/19/18)
	.614 (35-57)	LEHIGH (12/30/18)
3 PT FIELD GOALS MADE	8	PITTSBURGH (01/03/19)
	8	WESTERN KY. (12/19/18)
	8	IOWA (11/29/18)
3 PT FG ATTEMPTS	19	IOWA (11/29/18)
	17	PITTSBURGH (01/03/19)
	17	vs Oregon State (11/24/18)
3 PT FG PERCENTAGE	.667 (8-12)	WESTERN KY. (12/19/18)
	.471 (8-17)	PITTSBURGH (01/03/19)
FREE THROWS MADE	27	HARVARD (11/09/18)
	25	at DePaul (11/17/18)
FREE THROW ATTEMPTS	37	HARVARD (11/09/18)
	32	PITTSBURGH (01/03/19)
FREE THROW PERCENTAGE	.900 (9-10)	at Toledo (12/08/18)
	.846 (11-13)	at Marquette (12/22/18)
REBOUNDS	55	HARVARD (11/09/18)
	50	vs Gonzaga (11/22/18)
ASSISTS	30	at Georgia Tech (01/06/19)
	27	BINGHAMTON (12/16/18)
STEALS	13	BINGHAMTON (12/16/18)
	12	PITTSBURGH (01/03/19)
	12	WESTERN KY. (12/19/18)
BLOCKED SHOTS	12	WESTERN KY. (12/19/18)
	7	PITTSBURGH (01/03/19)
	7	vs Drake (11/23/18)
TURNOVERS	25	at DePaul (11/17/18)
	21	WESTERN KY. (12/19/18)
FOULS	19	LEHIGH (12/30/18)

OPPONENT HIGHS

POINTS	89	UCONN (12/02/18)
	81	vs Oregon State (11/24/18)
	77	at DePaul (11/17/18)
	71	IOWA (11/29/18)
	68	LEHIGH (12/30/18)
FIELD GOALS MADE	34	UCONN (12/02/18)
	29	IOWA (11/29/18)
FIELD GOAL ATTEMPTS	75	UCONN (12/02/18)
	73	at DePaul (11/17/18)
FIELD GOAL PERCENTAGE	.483 (28-58)	vs Oregon State (11/24/18)
	.453 (34-75)	UCONN (12/02/18)
3 PT FIELD GOALS MADE	11	HARVARD (11/09/18)
	10	at DePaul (11/17/18)
3 PT FG ATTEMPTS	40	BINGHAMTON (12/16/18)
	34	HARVARD (11/09/18)
3 PT FG PERCENTAGE	.450 (9-20)	vs Oregon State (11/24/18)
	.333 (6-18)	at Toledo (12/08/18)
FREE THROWS MADE	17	UCONN (12/02/18)
	16	vs Oregon State (11/24/18)
FREE THROW ATTEMPTS	23	vs Oregon State (11/24/18)
	22	LEHIGH (12/30/18)
FREE THROW PERCENTAGE	.889 (8-9)	IOWA (11/29/18)
	.867 (13-15)	at DePaul (11/17/18)
REBOUNDS	46	UCONN (12/02/18)
	43	vs Drake (11/23/18)
ASSISTS	21	vs Drake (11/23/18)
	18	IOWA (11/29/18)
STEALS	13	WESTERN KY. (12/19/18)
	13	at DePaul (11/17/18)
	13	PENN (11/12/18)
BLOCKED SHOTS	7	vs Gonzaga (11/22/18)
	6	at Georgia Tech (01/06/19)
TURNOVERS	24	PITTSBURGH (01/03/19)
	21	WESTERN KY. (12/19/18)
	21	BINGHAMTON (12/16/18)
	21	PENN (11/12/18)

NOTRE DAME LOWS

POINTS	71	UCONN (12/02/18)
	72	at Toledo (12/08/18)
	75	PENN (11/12/18)
	76	at Georgia Tech (01/06/19)
	81	vs Gonzaga (11/22/18)
FIELD GOALS MADE	27	UCONN (12/02/18)
	30	vs Gonzaga (11/22/18)
	30	at Toledo (12/08/18)
FIELD GOAL ATTEMPTS	53	WESTERN KY. (12/19/18)
	56	at Toledo (12/08/18)
FIELD GOAL PERCENTAGE	.403 (27-67)	UCONN (12/02/18)
	.431 (31-72)	vs Drake (11/23/18)
3 PT FIELD GOALS MADE	1	vs Gonzaga (11/22/18)
	1	UCONN (12/02/18)
	1	at Georgia Tech (01/06/19)
3 PT FG ATTEMPTS	6	vs Gonzaga (11/22/18)
	7	HARVARD (11/09/18)
	7	at DePaul (11/17/18)
3 PT FG PERCENTAGE	.083 (1-12)	UCONN (12/02/18)
	.100 (1-10)	at Georgia Tech (01/06/19)
FREE THROWS MADE	7	at Georgia Tech (01/06/19)
	9	at Toledo (12/08/18)
FREE THROW ATTEMPTS	10	at Toledo (12/08/18)
	13	PENN (11/12/18)
	13	at Marquette (12/22/18)
FREE THROW PERCENTAGE	.467 (7-15)	at Georgia Tech (01/06/19)
	.586 (17-29)	vs Oregon State (11/24/18)
REBOUNDS	34	at Georgia Tech (01/06/19)
	37	LEHIGH (12/30/18)
ASSISTS	10	UCONN (12/02/18)
	11	vs Drake (11/23/18)
STEALS	1	UCONN (12/02/18)
	4	at Toledo (12/08/18)
BLOCKED SHOTS	3	PENN (11/12/18)
	3	vs Oregon State (11/24/18)
	3	at Toledo (12/08/18)
	3	BINGHAMTON (12/16/18)
TURNOVERS	7	vs Oregon State (11/24/18)
	8	vs Drake (11/23/18)

OPPONENT LOWS

POINTS	44	PITTSBURGH (01/03/19)
	53	BINGHAMTON (12/16/18)
	53	WESTERN KY. (12/19/18)
	55	PENN (11/12/18)
	55	at Georgia Tech (01/06/19)
FIELD GOALS MADE	17	PITTSBURGH (01/03/19)
	20	BINGHAMTON (12/16/18)
FIELD GOAL ATTEMPTS	58	vs Oregon State (11/24/18)
	59	PENN (11/12/18)
FIELD GOAL PERCENTAGE	.266 (17-64)	PITTSBURGH (01/03/19)
	.286 (20-70)	BINGHAMTON (12/16/18)
3 PT FIELD GOALS MADE	3	vs Gonzaga (11/22/18)
	4	PENN (11/12/18)
	4	vs Drake (11/23/18)
	4	UCONN (12/02/18)
	4	at Georgia Tech (01/06/19)
3 PT FG ATTEMPTS	11	vs Gonzaga (11/22/18)
	15	PENN (11/12/18)
	15	at Georgia Tech (01/06/19)
3 PT FG PERCENTAGE	.200 (5-25)	IOWA (11/29/18)
	.200 (8-40)	BINGHAMTON (12/16/18)
FREE THROWS MADE	3	WESTERN KY. (12/19/18)
	3	PITTSBURGH (01/03/19)
FREE THROW ATTEMPTS	6	PITTSBURGH (01/03/19)
	7	at Toledo (12/08/18)
	7	WESTERN KY. (12/19/18)
FREE THROW PERCENTAGE	.429 (3-7)	WESTERN KY. (12/19/18)
	.500 (3-6)	PITTSBURGH (01/03/19)
REBOUNDS	23	at DePaul (11/17/18)
	28	at Toledo (12/08/18)
ASSISTS	10	LEHIGH (12/30/18)
	11	PENN (11/12/18)
	11	vs Oregon State (11/24/18)
	11	BINGHAMTON (12/16/18)
STEALS	3	vs Oregon State (11/24/18)
	3	UCONN (12/02/18)
	3	at Toledo (12/08/18)
BLOCKED SHOTS	0	HARVARD (11/09/18)
	0	BINGHAMTON (12/16/18)



NOTRE DAME INDIVIDUAL HIGHS

Points	32	Arike Ogunbowale at Marquette (12/22/18)
	30	Arike Ogunbowale vs Iowa (11/29/18)
	30	Arike Ogunbowale vs Drake (11/23/18)
	30	Arike Ogunbowale vs Harvard (11/09/18)
	28	Jackie Young at DePaul (11/17/18)
	28	Jessica Shepard vs Harvard (11/09/18)
Field Goals Made	13	Arike Ogunbowale at Marquette (12/22/18)
	13	Arike Ogunbowale vs Iowa (11/29/18)
Field Goal Att.	22	Arike Ogunbowale vs Oregon State (11/24/18)
	21	Arike Ogunbowale at Marquette (12/22/18)
	21	Arike Ogunbowale vs Iowa (11/29/18)
	21	Arike Ogunbowale vs Harvard (11/09/18)
FG Pct (min 5 made)	1.000 (8-8)	Jessica Shepard vs Binghamton (12/16/18)
	1.000 (6-6)	Jessica Shepard vs Western Ky. (12/19/18)
3-Point FG Made	4	Marina Mabrey vs Pittsburgh (01/03/19)
	4	Marina Mabrey vs Western Ky. (12/19/18)
3-Point FG Att.	9	Marina Mabrey vs Pittsburgh (01/03/19)
	9	Marina Mabrey vs Iowa (11/29/18)
	9	Arike Ogunbowale vs Penn (11/12/18)
3-Pt FG Pct (min 3 made)	1.000 (4-4)	Marina Mabrey vs Western Ky. (12/19/18)
	.750 (3-4)	Marina Mabrey vs Lehigh (12/30/18)
	.750 (3-4)	Jordan Nixon vs Western Ky. (12/19/18)
Free Throws Made	11	Jackie Young at DePaul (11/17/18)
	9	Jackie Young vs Binghamton (12/16/18)
	9	Arike Ogunbowale vs Harvard (11/09/18)
Free Throw Att.	12	Jackie Young at DePaul (11/17/18)
	10	Jackie Young vs Binghamton (12/16/18)
	10	Jackie Young vs UConn (12/02/18)
	10	Arike Ogunbowale vs Oregon State (11/24/18)
	10	Arike Ogunbowale vs Drake (11/23/18)
FT Pct (min 6 made)	1.000 (9-9)	Arike Ogunbowale vs Harvard (11/09/18)
	1.000 (6-6)	Arike Ogunbowale vs Penn (11/12/18)
Rebounds	18	Jessica Shepard at Marquette (12/22/18)
	16	Jessica Shepard at DePaul (11/17/18)
Assists	12	Arike Ogunbowale at Georgia Tech (01/06/19)
	10	Marina Mabrey vs Binghamton (12/16/18)
Steals	5	Marina Mabrey vs Western Ky. (12/19/18)
	4	Jackie Young vs Lehigh (12/30/18)
	4	Katlyn Gilbert vs Drake (11/23/18)
	4	Abby Prohaska at DePaul (11/17/18)
Blocked Shots	4	Brianna Turner at Marquette (12/22/18)
	4	Brianna Turner vs Western Ky. (12/19/18)
	4	Brianna Turner vs UConn (12/02/18)
	4	Brianna Turner vs Drake (11/23/18)
	4	Mikayla Vaughn vs Harvard (11/09/18)
Turnovers	9	Jordan Nixon vs Western Ky. (12/19/18)
	6	Jordan Nixon at DePaul (11/17/18)
	6	Jackie Young vs Penn (11/12/18)
	6	Jordan Nixon vs Harvard (11/09/18)
Fouls	5	Mikayla Vaughn vs Iowa (11/29/18)
	4	Jordan Nixon at Georgia Tech (01/06/19)
	4	Mikayla Vaughn vs Lehigh (12/30/18)
	4	Brianna Turner vs Lehigh (12/30/18)

OPPONENT INDIVIDUAL HIGHS

Points	28	Christyn Williams vs UConn (12/02/18)
	27	Ashton Millender at DePaul (11/17/18)
	26	Megan Gustafson vs Iowa (11/29/18)
	23	Natisha Hiedeman at Marquette (12/22/18)
	22	Slocum, Destiny vs Oregon State (11/24/18)
Field Goals Made	11	Christyn Williams vs UConn (12/02/18)
	11	Megan Gustafson vs Iowa (11/29/18)
Field Goal Att.	19	Rebecca Carmody vs Binghamton (12/16/18)
	18	Natisha Hiedeman at Marquette (12/22/18)
	18	Mikaela Boyd at Toledo (12/08/18)
FG Pct (min 5 made)	.688 (11-16)	Christyn Williams vs UConn (12/02/18)
	.688 (11-16)	Megan Gustafson vs Iowa (11/29/18)
3-Point FG Made	7	Ashton Millender at DePaul (11/17/18)
	5	Sydney Skinner vs Harvard (11/09/18)
3-Point FG Att.	12	Ashton Millender at DePaul (11/17/18)
	11	Sydney Skinner vs Harvard (11/09/18)
3-Pt FG Pct (min 3 made)	.600 (3-5)	Carly Boland vs Binghamton (12/16/18)
	.583 (7-12)	Ashton Millender at DePaul (11/17/18)
Free Throws Made	10	Slocum, Destiny vs Oregon State (11/24/18)
	5	Kierra Fletcher at Georgia Tech (01/06/19)
	5	Katie Lou Samuelson vs UConn (12/02/18)
	5	Mart'E Grays at DePaul (11/17/18)
Free Throw Att.	14	Slocum, Destiny vs Oregon State (11/24/18)
	6	Kierra Fletcher at Georgia Tech (01/06/19)
	6	Hannah Hedstrom vs Lehigh (12/30/18)
	6	Natisha Hiedeman at Marquette (12/22/18)
	6	Mart'E Grays at DePaul (11/17/18)
FT Pct (min 6 made)	.714 (10-14)	Slocum, Destiny vs Oregon State (11/24/18)
Rebounds	15	Napheesa Collier vs UConn (12/02/18)
	12	Annie Ramil vs Binghamton (12/16/18)
Assists	7	MONAHAN, MADDIE vs Drake (11/23/18)
	7	STOCKTON, Laura vs Gonzaga (11/22/18)
Steals	5	Dee Givens vs Western Ky. (12/19/18)
	4	Tori Crawford vs Penn (11/12/18)
Blocked Shots	3	Elizabeth Dixon at Georgia Tech (01/06/19)
	3	Kaayla McIntyre at Toledo (12/08/18)
	3	Napheesa Collier vs UConn (12/02/18)
	3	Makenzie Meyer vs Iowa (11/29/18)
	3	KEMPTON, Melody vs Gonzaga (11/22/18)
Turnovers	6	Camryn Buhr vs Lehigh (12/30/18)
	6	Raneem Elgedawy vs Western Ky. (12/19/18)
	6	Kendall Grasela vs Penn (11/12/18)
Fouls	5	Hannah Hedstrom vs Lehigh (12/30/18)
	5	FORSYTH, Louise vs Gonzaga (11/22/18)
	5	Kelly Campbell at DePaul (11/17/18)



GAME BY GAME COMPARISON

All games

Opponent	1st	2nd	Score	Mar	Total FG	FG Pct	3-Pointers	3FG Pct	Free Throws	FT Pct	Rebounds	Assist	T/Over	Block	Steal	Fouls
HARVARD	50/29	53/29	103-58	+45	37-67/21-72	.552/.292	2-7/11-34	.286/.324	27-37/5-8	.730/.625	55/30 +25	24/15	16/18	6/0	8/8	9/26
PENN	39/27	36/28	75-55	+20	31-66/21-59	.470/.356	3-12/4-15	.250/.267	10-13/9-16	.769/.563	45/34 +11	21/11	19/21	3/3	11/13	17/11
DePaul	54/47	47/30	101-77	+24	37-62/27-73	.597/.370	2-7/10-32	.286/.313	25-30/13-15	.833/.867	48/23 +25	14/14	25/17	4/3	10/13	18/27
Gonzaga	40/29	41/36	81-65	+16	30-66/25-68	.455/.368	1-6/3-11	.167/.273	20-27/12-17	.741/.706	50/33 +17	13/16	15/11	5/7	7/8	12/20
Drake	44/31	38/33	82-64	+18	31-72/27-64	.431/.422	3-14/4-16	.214/.250	17-25/6-9	.680/.667	40/43 (3)	11/21	8/18	7/3	10/5	14/19
Oregon State	41/50	50/31	91-81	+10	34-70/28-58	.486/.483	6-17/9-20	.353/.450	17-29/16-23	.586/.696	39/33 +6	18/11	7/11	3/2	7/3	19/24
IOWA	45/34	60/37	105-71	+34	40-81/29-69	.494/.420	8-19/5-25	.421/.200	17-22/8-9	.773/.889	49/36 +13	21/18	9/18	5/5	9/6	11/18
UCONN	41/44	30/45	71-89	(18)	27-67/34-75	.403/.453	1-12/4-17	.083/.235	16-24/17-20	.667/.850	41/46 (5)	10/16	9/7	6/5	1/3	18/18
Toledo	43/37	29/19	72-56	+16	30-56/23-61	.536/.377	3-8/6-18	.375/.333	9-10/4-7	.900/.571	39/28 +11	12/16	16/12	3/3	4/3	12/11
BINGHAMTON	56/29	47/24	103-53	+50	39-70/20-70	.557/.286	5-15/8-40	.333/.200	20-26/5-8	.769/.625	49/35 +14	27/11	12/21	3/0	13/4	13/21
WESTERN KY.	53/15	41/38	94-53	+41	37-53/21-69	.698/.304	8-12/8-25	.667/.320	12-15/3-7	.800/.429	38/29 +9	25/12	21/21	12/5	12/13	11/19
Marquette	42/29	45/34	87-63	+24	37-62/24-70	.597/.343	2-8/5-22	.250/.227	11-13/10-15	.846/.667	39/33 +6	26/13	12/14	4/1	6/5	16/14
LEHIGH	46/31	49/37	95-68	+27	35-57/24-60	.614/.400	5-11/6-21	.455/.286	20-24/14-22	.833/.636	37/29 +8	26/10	17/20	4/1	8/9	19/21
PITTSBURGH	60/14	40/30	100-44	+56	34-65/17-64	.523/.266	8-17/7-23	.471/.304	24-32/3-6	.750/.500	49/36 +13	24/12	13/24	7/1	12/9	6/23
Georgia Tech	39/22	37/33	76-55	+21	34-62/22-61	.548/.361	1-10/4-15	.100/.267	7-15/7-11	.467/.636	34/33 +1	30/12	14/20	5/6	8/5	14/15

Note: Game totals are displayed in the format TEAM/OPPONENT for each category


 Nov. 9, 2018
 Purcell Pavilion (Notre Dame, Ind.)

Harvard 58 • 0-1

#	Player		Total		3-Ptr		Rebounds			PF	TP	A TO Blk Stl				Min
			FG-FGA	FG-FGA	FT-FTA	FT-FTA	Off	Def	Tot			A	TO	Blk	Stl	
13	Jeannie Boehm	f	2-4	0-0	0-2	0	2	2	4	4	0	1	0	1	17	
24	Jadyn Bush	f	1-3	0-0	3-3	4	2	6	3	5	3	0	0	0	19	
03	Katie Benzan	g	1-14	1-9	0-0	1	0	1	2	3	4	2	0	0	29	
20	Madeline Raster	g	2-6	1-3	0-0	0	1	1	3	5	1	1	0	2	13	
25	Sydney Skinner	g	5-16	5-11	0-0	3	1	4	3	15	3	4	0	1	32	
00	Nani Redford	g	5-16	2-6	0-1	0	1	1	3	12	1	4	0	0	22	
01	Kelsey Bogdan	g	0-0	0-0	0-0	0	0	0	0	0	0	0	0	0	4	
02	Tess Sussman	g	1-2	0-0	0-0	0	0	0	0	2	0	0	0	0	3	
05	Matilda Salen	g	0-0	0-0	0-0	0	0	0	1	0	0	0	0	0	3	
11	Maggie McCarthy	g	0-1	0-1	0-0	0	0	0	3	0	0	1	0	1	5	
12	Rachel Levy	g	2-6	1-2	2-2	2	4	6	1	7	2	1	0	2	23	
14	Mackenzie Barta	g	1-2	1-2	0-0	0	0	0	2	3	0	0	0	0	9	
15	Maria Guramare	g	0-0	0-0	0-0	0	1	1	0	0	1	1	0	0	5	
22	Maddie Stuhlfreyer	g	1-2	0-0	0-0	0	2	2	1	2	0	2	0	1	16	
Team						2	4	6				1				
Totals			21-72	11-34	5-8	12	18	30	26	58	15	18	0	8	200	

1st - FG %:	4-19	21.1%	2nd: 7-20	35.0%	3rd: 6-19	31.6%	4th: 4-14	28.6%	Game: 21-72	29.2%	Deadball	
3FG %:	3-11	27.3%	4-9	44.4%	3-9	33.3%	1-5	20.0%	11-34	32.4%	Rebounds	
FT %:	0-0	0.0%	0-0	0.0%	1-3	33.3%	4-5	80.0%	5-8	62.5%	Rebounds	1

Notre Dame 103 • 1-0

#	Player	Total			Rebounds			PF	TP	A TO Blk Stl			Min		
		FG-FGA	FG-FGA	FT-FTA	Off	Def	Tot			A	TO	Blk		Stl	
11	Brianna Turner	f	3-7	0-0	5-8	3	8	11	1	11	3	3	1	0	21
32	Jessica Shepard	f	12-16	0-0	4-6	3	5	8	0	28	4	1	1	1	26
00	Jordan Nixon	g	1-2	0-0	2-2	2	2	4	0	4	3	6	0	1	29
05	Jackie Young	g	3-5	1-1	1-1	2	2	4	0	8	5	1	0	2	27
24	Arike Ogunbowale	g	10-21	1-5	9-9	0	4	4	2	30	5	3	0	1	26
10	Katlyn Gilbert	g	1-3	0-1	0-1	1	1	2	1	2	1	0	0	0	16
12	Abby Prohaska	g	1-3	0-0	4-4	1	4	5	1	6	3	1	0	2	18
20	Nicole Benz	g	0-2	0-0	2-2	1	2	3	0	2	0	0	0	0	4
30	Mikayla Vaughn	g	6-7	0-0	0-2	1	5	6	4	12	0	0	4	0	23
40	Maureen Butler	g	0-1	0-0	0-2	1	1	2	0	0	0	0	0	1	10
Team						1	5	6				1			
Totals			37-67	2-7	27-37	16	39	55	9	103	24	16	6	8	200
1st - FG %:		7-16	43.8%	2nd: 10-16	62.5%	3rd: 14-21	66.7%	4th: 6-14	42.9%	Game: 37-67		55.2%	Deadball		
		1-2	50.0%	6-7	85.7%	8-10	80.0%	5-10	50.0%			28.6%	Rebounds		
		FT %:	8-10	80.0%								27-37	73.0%		

1st - FG %:	7-16	43.8%	2nd: 10-16	62.5%	3rd: 14-21	66.7%	4th: 6-14	42.9%	Game: 37-67	55.2%	Deadball	
3FG %:	1-3	33.3%	1-2	50.0%	0-2	0.0%	0-0	0.0%	2-7	28.6%	Rebounds	
FT %:	8-10	80.0%	6-7	85.7%	8-10	80.0%	5-10	50.0%	27-37	73.0%	Rebounds	5

Officials: Bryan Brunette, Angelica Suffren, John Capolino

Technical fouls: Harvard-None. Notre Dame-None.

Attendance: 9149

2018-19 Women's Basketball. Round: 0. Harvard vs Notre Dame. Played at:

Score by periods	1st	2nd	3rd	4th	Total	In	Off	2nd	Fast	Bench
Harvard	11	18	16	13	58	Points	Paint	T/O	Chance	Break
Notre Dame	23	27	36	17	103	275	14	10	13	4
						513	58	26	13	19

 Nov. 17, 2018
 Wintrust Arena (Chicago)

Notre Dame - 101		Record: 3-0																
NO. Name		Min	FG		3P		FT		Rebounds		Fouls		TP	AS	TO	ST	Blocks	+/-
			M-A	M-A	M-A	M-A	OR	DR	TOT	PF	FF	FD						
11	Brianna Turner	F	16:22	4-5	0-0	0-0	0	4	4	2	1	8	1	3	0	0	0	-1
32	Jessica Shepard	F	28:56	7-13	0-0	1-4	8	8	16	1	6	15	0	2	0	0	1	22
0	Jordan Nixon	G	23:48	3-3	0-0	0	0	2	2	3	1	6	3	6	3	0	0	12
5	Jackie Young	G	35:14	8-14	1-2	11-12	2	10	12	2	7	28	2	5	1	1	18	
24	Arike Ogunbowale	G	33:43	8-19	1-5	7-8	1	4	5	3	8	24	3	5	2	0	17	
33	Danielle Patterson	22:21	5-6	0-0	4-4	2	0	2	3	2	14	0	1	0	3	0	13	
10	Katlyn Gilbert	08:41	0-0	0-0	0	0	2	2	2	0	0	1	0	0	0	0	9	
30	Mikayla Vaughn	02:40	0-0	0-0	0	0	1	1	0	0	0	1	2	0	0	0	1	
12	Abby Prohaska	26:11	1-1	0-0	2-2	0	2	2	2	2	4	0	4	0	0	0	25	
20	Nicole Benz	01:01	1-1	0-0	0	0	0	0	0	0	2	0	0	0	0	0	2	
22	Danielle Cosgrove	01:01	0-0	0-0	0	0	0	0	0	0	0	0	0	0	0	0	2	
Team								0	2	2	0							
Totals			37-62	2-7	25-30	13	35	48	18	27	101	14	25	10	4	3	24	
Shooting By Period																		
			1st FG		8-14		57.1%											
			3PT%		2-4		50.0%											
			FT		4-4		100%											
			2nd FG		12-17		70.6%											
			3PT%		0-1		0.0%											
			FT		8-8		100%											
			3rd FG		9-16		56.3%											
			3PT%		0-6		0.0%											
			FT		7-10		70.0%											
			4th FG		8-15		53.3%											
			3PT%		0-1		0.0%											
			FT		6-8		75.0%											
			GM FG		37-62		59.7%											
			3PT%		2-7		28.6%											
			FT		25-30		83.3%											

DePaul - 77		Record: 1-1											Technical Fouls: NONE						Dead Ball Rebounds: 4	
NO.	Name	Min	FG		3P		FT		Rebounds		Fouls		TP	AS	TO	ST	Blocks		+/-	
			M	A	M	A	M	A	OR	DR	FT	PF					BB	BA		
22	Chante Stonewall	F	32:56	9-17	1-2	2-2	6	2	8	2	4	21	1	2	2	1	1	-15	1st FG% 4-12 33.3%	
35	Martie Grays	F	16:31	1-9	0-3	5-6	1	0	1	4	4	7	1	4	0	1	0	-11	FT% 3-4 75%	
0	Rebekah Dahman	G	16:16	0-5	0-2	3-4	0	0	0	1	2	3	3	3	0	0	0	-2	2nd FG% 6-16 37.5%	
1	Ashton Millender	G	33:23	10-16	7-12	0	0	1	1	3	0	27	0	0	3	0	0	-17	3rd FG% 3-9 33.3%	
20	Kelly Campbell	G	26:21	1-1	0-0	0	0	3	3	5	3	2	5	4	3	1	0	-11	FT% 3-3 100%	
23	Dee Bekajia	F	14:11	2-6	2-6	2-2	0	2	2	3	1	8	0	1	0	0	0	-18	3rd FG% 4-15 26.7%	
24	Tanita Allen	F	20:56	2-8	0-4	1-1	0	0	0	4	1	5	2	0	0	1	0	-6	3PT% 3-7 42.9%	
10	Lexi Held	F	10:38	1-2	0-0	0	0	1	0	1	0	2	2	1	0	0	0	-8	FT% 7-8 87.5%	
15	Jolene Daninger	F	03:34	0-0	0-0	0	0	0	0	0	0	0	0	0	0	0	0	-5	4th FG% 6-19 31.6%	
2	Maya Stovall	F	09:05	1-1	0-0	0	0	1	1	2	0	2	1	0	2	0	0	-7	3PT% 0-4 0.0%	
11	Sonya Morris	F	16:09	0-8	0-3	0-0	0	2	1	3	3	1	0	0	2	2	0	-20	FT% 0-0 0%	
Team								0	3	3	0								GM FG% 27-73 37.0%	
Totals			27-73	10-32	13-15	10	13	23	27	18	77	14	17	13	3	4	24		3PT% 10-32 31.3%	

		Technical Fouls: NONE		FT% 13-15 86.7%																																																						
				Dead Ball Rebounds: 2																																																						
<table><tr><td>UND</td><td>DPU</td></tr><tr><td>Biggest lead</td><td>24 (4th 0:42) 7 (1st 1:23)</td></tr><tr><td>Best Scoring Run</td><td>10 (2nd 4:00) 8 (1st 6:37)</td></tr><tr><td>Lead Changes</td><td>2 7</td></tr><tr><td>Times Tied</td><td>3</td></tr><tr><td>Time with Lead</td><td>26:52 11:53</td></tr></table>		UND	DPU	Biggest lead	24 (4 th 0:42) 7 (1 st 1:23)	Best Scoring Run	10 (2 nd 4:00) 8 (1 st 6:37)	Lead Changes	2 7	Times Tied	3	Time with Lead	26:52 11:53	<table><tr><td>Points from</td><td>UND</td><td>DPU</td></tr><tr><td>Turnovers</td><td>22</td><td>32</td></tr><tr><td>Paint</td><td>58</td><td>26</td></tr><tr><td>Second Chance</td><td>12</td><td>7</td></tr><tr><td>Fast Breaks</td><td>29</td><td>11</td></tr><tr><td>Bench</td><td>20</td><td>17</td></tr></table>		Points from	UND	DPU	Turnovers	22	32	Paint	58	26	Second Chance	12	7	Fast Breaks	29	11	Bench	20	17	<table><tr><td colspan="5">Period by Period Scoring</td></tr><tr><td></td><td>1st</td><td>2nd</td><td>3rd</td><td>4th</td><td>TOT</td></tr><tr><td>UND</td><td>22</td><td>32</td><td>25</td><td>22</td><td>101</td></tr><tr><td>DPU</td><td>29</td><td>18</td><td>18</td><td>12</td><td>77</td></tr></table>		Period by Period Scoring						1st	2nd	3rd	4th	TOT	UND	22	32	25	22	101	DPU	29	18	18	12	77
UND	DPU																																																									
Biggest lead	24 (4 th 0:42) 7 (1 st 1:23)																																																									
Best Scoring Run	10 (2 nd 4:00) 8 (1 st 6:37)																																																									
Lead Changes	2 7																																																									
Times Tied	3																																																									
Time with Lead	26:52 11:53																																																									
Points from	UND	DPU																																																								
Turnovers	22	32																																																								
Paint	58	26																																																								
Second Chance	12	7																																																								
Fast Breaks	29	11																																																								
Bench	20	17																																																								
Period by Period Scoring																																																										
	1st	2nd	3rd	4th	TOT																																																					
UND	22	32	25	22	101																																																					
DPU	29	18	18	12	77																																																					

 Nov. 12, 2018
 Purcell Pavilion (Notre Dame, Ind.)

Penn 55 • 1-1

#	Player		Total		3-Ptr		Rebounds			PF	TP	A	TO	Blk	Stl	Min
			FG-FGA	FG-FGA	FT-FTA	FT-FTA	Off	Def	Tot							
50	Princess Aghayere	f	2-6	0-1	0-0	0	4	4	1	4	0	0	0	1	14	
31	Eleah Parker	c	3-13	0-0	0-0	2	3	5	2	6	0	5	0	1	26	
02	Katie Kinum	g	0-1	0-1	0-0	0	0	0	0	0	1	2	0	1	6	
11	Kendall Grasea	g	4-6	1-1	1-1	2	2	3	2	10	2	6	0	0	37	
25	Ashley Russell	g	5-10	1-2	4-5	2	1	3	1	15	3	2	1	0	28	
03	Michael Jones	g	1-3	0-0	0-4	1	0	1	0	2	1	1	0	2	10	
04	Kennedy Suttle	g	1-1	0-0	0-0	1	0	1	1	2	1	0	0	2	11	
05	Sereena Weledji	g	1-2	0-1	0-0	0	0	0	0	2	0	0	0	0	2	
14	Meg Hair	g	0-0	0-0	0-0	0	0	0	0	0	0	0	0	0	1	
21	Mia Lakstigala	g	0-3	0-0	0-0	0	0	0	1	0	0	1	0	0	5	
23	Kristen Daley	g	1-1	0-0	0-0	0	1	1	0	2	0	0	0	0	2	
24	Tori Crawford	g	0-2	0-2	4-4	1	2	3	0	4	0	2	0	4	15	
33	Phoebe Sterba	g	3-9	2-7	0-0	1	3	4	2	8	1	1	0	0	29	
34	Chrissy DiCindio	g	0-0	0-0	0-0	0	0	0	0	0	0	0	0	0	2	
40	Emily Anderson	g	0-2	0-0	0-2	2	3	5	1	0	2	1	2	2	13	
	Team					2	2	4	11	55	11	21	3	13	201	
	Totals		21-59	4-15	9-16	13	21	34	11	55	11	21	3	13	201	
40	50%	5.14	25.7%	26%	6.14	42.9%	2.4	4.15	48.6%	5.91	2.21	2.35	0.33	0.33	33.0	



Nov. 23, 2018

Vancouver Convention Centre (Vancouver, Canada)

Drake 64 • 5-1

#	Player		Total			3-Ptr			Rebounds			PF	TP	A	TO	Blk	Stl	Min		
			FG-FGA	FG-FGA	FT-FTA	FG-FGA	FG-FGA	FT-FTA	Off	Def	Tot									
05	HITTNER, BECCA	f	3-12	0-3	2-2	2	4	6	2	8	2	3	0	1	24					
35	JONAS, BECCA	f	1-3	0-0	0-0	0	5	5	2	2	1	2	1	0	15					
02	MONAHAN, MADDIE	g	1-2	0-0	2-2	2	0	2	2	4	7	1	0	1	26					
20	DEAN, MADDY	g	4-10	2-6	0-0	1	3	4	3	10	2	1	0	0	24					
21	BACHRODT, SAMMIE	g	5-9	1-3	0-0	1	3	4	1	11	2	3	0	0	25					
12	ROSE, BRENNI	g	2-5	0-1	0-0	1	1	2	1	4	5	0	1	0	15					
15	WOOLDRIDGE, ALLIE	g	0-0	0-0	1-2	0	2	2	0	1	0	0	0	0	10					
22	FULLER, HANNAH	g	0-2	0-0	0-0	0	1	1	3	0	1	3	1	1	15					
23	NEGAARD, MAGGIE	g	0-1	0-0	0-0	0	1	1	1	0	0	0	1	0	2					
24	MILLER, NICOLE	g	0-3	0-2	0-0	0	1	1	0	0	0	1	0	0	13					
31	BURICH, MONICA	g	3-3	0-0	0-0	1	3	4	2	6	1	0	0	0	13					
50	RHINE, SARA	g	8-14	1-1	1-3	1	4	5	2	18	0	3	0	1	18					
Team									3 3 6											
Totals			27-64			4-16			6-9			12 31 43			19 64			21 18 3 5 200		
1st - FG %:			7-16	43.8%	2nd: 6-18	33.3%	3rd: 7-18	38.9%	4th: 7-12	58.3%	Game: 27-64	42.2%	Deadball							
3FG %:			3-8	37.5%	1-4	25.0%	0-4	0.0%	0-0	0.0%	4-16	25.0%	Rebounds							
FT %:			0-0	0.0%	1-2	50.0%	2-2	100.0%	3-5	60.0%	6-9	66.7%	1, 2							

Notre Dame 82 • 5-0

#	Player		Total			3-Ptr			Rebounds			PF	TP	A	TO	Blk	Stl	Min
			FG-FGA	FG-FGA	FT-FTA	FG-FGA	FG-FGA	FT-FTA	Off	Def	Tot							
11	Brianna Turner	f	5-12	0-0	2-4	2	4	6	2	12	0	1	4	2	26			
33	Danielle Patterson	f	4-8	0-0	0-0	3	3	6	0	8	0	0	0	0	26			
05	Jackie Young	g	8-15	1-3	8-9	1	3	4	2	25	5	1	2	3	34			
12	Abby Prohaska	g	1-4	0-0	1-2	2	2	4	3	3	3	1	0	0	30			
24	Arike Ogunbowale	g	11-19	2-6	6-10	1	7	8	1	30	3	1	1	1	32			
10	Katlyn Gilbert	g	2-7	0-1	0-0	0	3	3	1	4	0	2	0	4	26			
20	Nicole Benz	g	0-2	0-1	0-0	0	1	1	0	0	0	1	0	0	3			
22	Danielle Cosgrove	g	0-3	0-3	0-0	0	1	1	1	0	0	1	0	0	11			
30	Mikayla Vaughn	g	0-1	0-0	0-0	1	3	4	3	0	0	0	0	0	9			
40	Maureen Butler	g	0-1	0-0	0-0	1	0	1	1	0	0	0	0	0	3			
Team																		
Totals			31-72	3-14	17-25	13	27	40	14	82	11	8	7	10	200			
1st - FG %:			7-22	31.8%	2nd: 9-14	64.3%	3rd: 11-18	61.1%	4th: 4-18	22.2%	Game: 31-72	43.1%	Deadball					
3FG %:			0-2	0.0%	2-4	50.0%	1-3	33.3%	0-5	0.0%	3-14	21.4%	Rebounds					
FT %:			3-7	42.9%	7-9	77.8%	4-5	80.0%	3-4	75.0%	17-25	68.0%	3					

Officials: Brian Hall, Metta Roberts, Bob Enterline

Technical fouls: Drake-None. Notre Dame-None.

Attendance: 1156

2018 Vancouver Showcase

Score by periods	1st	2nd	3rd	4th	Total
Drake	17	14	16	17	64
Notre Dame	17	27	27	11	82

	In	Off	2nd	Fast	Bench
Points	44	7	8	0	29
DU	52	18	9	12	4
ND					

Nov. 23, 2018

Purcell Pavilion (Notre Dame, Ind.)

Iowa 71 • 4-2

#	Player		Total			3-Ptr			Rebounds			PF	TP	A	TO	Blk	Stl	Min
			FG-FGA	FG-FGA	FT-FTA	FG-FGA	FG-FGA	FT-FTA	Off	Def	Tot							
21	Hannah Stewart	f	5-9	0-0	2-2	3	3	6	4	12	0	3	1	1	29			
10	Megan Gustafson	c	11-16	0-0	4-5	3	7	10	2	26	0	1	1	0	36			
03	Makenzie Meyer	g	4-13	2-9	0-0	3	3	6	2	10	5	2	3	2	38			
05	Alexis Sevillian	g	2-10	0-7	0-0	0	2	2	3	4	6	5	0	1	27			
11	Tania Davis	g	6-15	3-7	0-0	0	1	1	4	15	4	4	0	1	36			
23	Logan Cook	g	0-0	0-0	0-0	0	0	0	0	0	0	0	0	0	2			
24	Zion Sanders	g	0-3	0-1	2-2	1	1	2	1	2	2	3	0	0	17			
25	Monika Czinano	g	0-0	0-0	0-0	0	0	0	0	0	0	0	0	0	2			
43	Amanda Ollinger	g	1-3	0-1	0-0	2	1	3	2	2	1	0	0	0	13			
Team																		
Totals			29-69	5-25	8-9	16	20	36	18	71	18	18	5	6	200			
1st - FG %:			8-19	42.1%	2nd: 8-15	53.3%	3rd: 5-15	33.3%	4th: 8-20	40.0%	Game: 29-69	42.0%	Deadball					
3FG %:			1-8	12.5%	1-5	20.0%	2-4	50.0%	1-8	12.5%	5-25	20.0%	Rebounds					
FT %:			0-0	0.0%	0-0	0.0%	2-3	66.7%	6-6	100.0%	8-9	88.9%	1					

Notre Dame 105 • 7-0

#	Player		Total		3-Ptr		Rebounds			PF	TP	A	TO	Blk	Stl	Min
			FG-FGA	FG-FGA	FT-FTA	Off	Def	Tot								
11	Brianna Turner	f	4-8	0-0	6-8	6	5	11	0	14	4	0	1	1	25	
32	Jessica Shepard	f	5-10	0-0	0-0	3	5	8	3	10	4	2	0	3	26	
03	Marina Mabrey	g	6-13	3-9	3-4	0	1	1	0	18	5	1	0	2	23	
05	Jackie Young	g	6-11	0-0	3-4	4	3	7	1	15	6	0	1	2	36	
24	Arike Ogunbowale	g	13-21	3-5	1-2	2	2	4	1	30	2	3	0	1	34	
10	Katlyn Gilbert		1-1	1-1	0-0	0	0	0	0	3	0	1	0	0	5	
12	Abby Prohaska		0-2	0-0	2-2	3	0	3	0	2	2	2	1	0	16	
20	Nicole Benz		1-1	0-0	0-0	1	1	2	0	2	0	0	0	0	4	
22	Danielle Cosgrove		1-5	1-4	0-0	0	1	1	1	3	0	0	0	0	6	
30	Mikayla Vaughn		1-1	0-0	2-2	1	1	2	5	4	0	0	1	0	6	
33	Danielle Patterson		2-6	0-0	0-0	1	3	4	0	4	0	0	1	0	16	
40	Maureen Butler		0-2	0-0	0-0	0	0	0	0	0	0	0	0	0	3	
Team						4	2	6								
Totals			40-81	8-19	17-22	25	24	49	11	105	21	9	5	9	200	
1st - FG %:			10-22	45.5%	2nd: 8-18	44.4%	3rd: 13-19	68.4%	4th: 9-22	40.9%	Game: 40-81	49.4%	Deadball			Rebounds
3FG %:			3-7	42.9%	2-2	0.0%	3-8	37.5%	8-19	42.1%	17-22	77.3%				
FT %:			5-8	62.5%	1-1	100.0%	6-8	75.0%	5-5	100.0%	17-22	77.3%				



Dec. 8, 2018
Savage Arena (Toledo, Ohio)

Notre Dame 72 • 7-1

#	Player	Total		3-Ptr		Rebounds		PF	TP	A	TO	Blk	Stl	Min	
		FG	FGA	FG	FGA	Off	Def								
11	Brianna Turner	f	3-8	0-0	1-1	2	2	4	2	7	0	3	1	0	29
32	Jessica Shepard	f	6-11	0-0	4-4	3	5	8	4	16	2	3	0	1	32
03	Marina Mabrey	g	4-7	3-5	0-0	0	2	2	1	11	1	3	1	0	34
02	Jackie Young	g	7-12	0-1	0-1	1	9	10	2	14	5	2	0	1	33
24	Arike Ogunbowale	g	9-15	0-2	4-4	0	6	6	2	22	3	4	0	2	37
00	Jordan Nixon		0-1	0-0	0-0	0	0	0	0	0	0	0	0	0	12
12	Abby Prohaska		0-1	0-0	0-0	0	2	2	0	0	1	0	0	0	15
22	Danielle Cosgrove		0-0	0-0	0-0	0	0	0	0	0	0	0	0	0	1
30	Mikayla Vaughn		1-1	0-0	0-0	1	0	1	1	2	0	1	1	0	5
40	Maureen Butler		0-0	0-0	0-0	0	0	0	0	0	0	0	0	0	2
Team						4	2	6							
Totals			30-56	3-8	9-10	11	28	39	12	72	12	16	3	4	200
1st - FG %:		10-17	58.8%	2nd: 7-13	53.8%	3rd: 7-14	50.0%	4th: 6-12	50.0%	Game: 30-56		53.6%	Deadball Rebounds		
3FG %:		0-1	0.0%	2-4	50.0%	1-2	50.0%	0-1	0.0%	3-8		37.5%			
FT %:		3-4	75.0%	4-4	100.0%	0-0	0.0%	2-2	100.0%	9-10		90.0%			

Toledo 56 • 6-2

#	Player		Total		3-Ptr		Rebounds		PF	TP	A	TO	Blk	Stl	Min
			FG	FGA	FG	FGA	FT	FTA							
05	St-Fort, Sarah	f	1-3	0-0	1-4	3	4	7	2	3	1	2	0	0	24
15	McIntyre, Kaayla	c	4-8	0-0	2-2	0	2	2	2	10	3	2	3	0	33
01	Rokkanen, Sara	g	3-9	1-4	1-1	0	3	3	0	8	5	2	0	0	33
02	Boyd, Mikaela	g	7-18	1-4	0-0	3	2	5	1	15	3	1	0	1	34
03	Santucci, Mariella	g	4-11	2-5	0-0	1	1	2	3	10	2	3	0	1	35
14	Carlsten-Handberg, Ty	g	2-3	2-3	0-0	2	1	3	0	6	1	0	0	0	10
23	Beacham, Tanaya	g	1-5	0-0	0-0	0	1	1	1	2	0	0	0	0	13
33	Black, Nakiah	g	1-4	0-2	0-0	0	0	0	2	2	1	1	0	1	18
Team						3	2	5							
Totals			23-61	6-18	4-7	12	16	28	11	56	16	12	3	3	200
1st - FG %:			9-16	56.3%	2nd: 7-13	53.8%	3rd: 3-18	16.7%	4th: 4-14	28.6%	Game: 23-61	37.7%	Deadball		
3FG %:			2-4	50.0%	3-4	75.0%	1-5	20.0%	0-5	0.0%	6-18	33.3%	Rebounds		
FT %:			0-0	0.0%	0-2	0.0%	1-2	50.0%	3-3	100.0%	4-7	57.1%	1		

Officials: Nathan Baker, Bryan Enterline, Barb Smith

Technical fouls: Notre Dame-None. Toledo-None.

Attendance: 6059

6,059 is third-largest crowd in school history

Score by periods	1st	2nd	3rd	4th	Total
Notre Dame	23	20	15	14	72
Toledo	20	17	8	11	56

	In	Off	2nd	Fast	Bench
Points	Paint	T/O	Chance	Break	
ND	40	15	12	2	0
TOLEDO	20	10	7	2	10

Dec. 16, 2018
Purcell Pavilion (Notre Dame, Ind.)

Binghamton 53 • 5-6

#	Player		Total		3-Ptr		Rebounds			PF	TP	A	TO	Blk	Stl	Min
			FG-FGA	FG-FGA	FT-FTA	Off	Def	Total								
24	Olivia Ramil	f	2-5	0-1	2-3	3	1	4	4	6	1	1	0	0	23	
50	Kaylee Wasco	f	3-5	0-1	2-3	2	2	4	4	6	0	3	0	0	25	
22	Lizzy Spindler	g	4-10	2-7	0-0	1	1	2	0	10	3	4	0	0	31	
32	Carly Boland	g	3-6	3-5	0-0	1	2	3	3	9	0	2	0	0	20	
33	Rebecca Carmody	g	5-19	2-8	0-0	0	1	1	0	12	3	3	0	2	28	
04	Annie Ramil	g	2-9	0-3	1-2	7	5	12	4	5	1	4	0	0	19	
05	Haylee Moore		0-5	0-5	0-0	0	1	1	1	0	2	0	0	0	14	
13	Kennedi Thompson		0-0	0-0	0-0	0	0	0	2	0	0	0	0	0	7	
21	Karlee Krchnavi		0-3	0-3	0-0	1	2	3	2	0	0	2	0	2	23	
23	Bailey Williams		1-8	1-7	0-0	1	1	2	1	3	1	1	0	0	10	
Team						2	1	3				1				
Totals				20-70	8-40	5-8	18	17	35	21	53	11	21	0	4	200
1st - FG %:			7-20	35.0%	2nd: 4-17	23.5%	3rd: 5-15	33.3%	4th: 4-18	22.2%	Game: 20-70			28.6%	Deadball	
3FG %:			1-1	100.0%	2-11	18.2%	1-5	20.0%	2-3	66.7%	5-8			62.5%	Rebounds	
FT %:			1-2	50.0%	1-1	100.0%	1-2	50.0%							3	

Notre Dame 103 • 9-1

#	Player		Total		3-Ptr		Rebounds		PF	TP	A	TO	Blk	Stl	Min	
			FG-FGA	FG-FGA	FT-FTA	Off	Def	Tot								
11	Brianna Turner	f	5-7	0-0	4-5	5	4	9	1	14	0	1	1	0	21	
32	Jessica Shepard	f	8-8	0-0	2-2	0	4	4	1	18	2	2	0	3	18	
03	Marina Mabrey	g	9-14	2-5	1-3	0	0	0	1	21	10	0	0	1	22	
05	Jackie Young	g	6-9	0-0	9-10	3	3	6	2	21	7	0	0	2	29	
24	Arike Ogunbowale	g	6-10	1-3	0-2	1	10	11	2	13	5	2	0	2	24	
00	Jordan Nixon		0-5	0-2	0-0	0	2	2	1	0	1	2	0	3	29	
20	Nicole Benz		0-1	0-1	0-0	0	2	2	0	0	0	0	0	0	10	
22	Danielle Cosgrove		2-5	2-4	0-0	1	2	3	1	6	0	1	1	1	13	
30	Mikayla Vaughn		3-8	0-0	4-4	5	3	8	2	10	0	4	0	1	25	
40	Maureen Butler		0-3	0-0	0-0	1	0	1	2	0	2	0	1	0	9	
Team						1	2	3								
Totals				39-70	5-15	20-26	17	32	49	13	103	27	12	3	13	200
1st - FG %:			12-17	70.6%	2nd: 8-13	61.5%	3rd: 15-23	65.2%	4th: 4-17	23.5%	Game: 39-70	55.7%	Deadball		Rebounds	
3FG %:			1-1	100.0%	2-6	33.3%	1-3	33.3%	2-3	66.7%	5-15	33.3%	3			
FT %:			3-5	60.0%	11-14	78.6%	2-3	66.7%	4-4	100.0%	20-26	76.9%				

Officials: Ryan Durham, Mark Berger, Thomas Danaher

Technical fouls: Binghamton-None. Notre Dame-None.

Attendance: 8183

2018-19 Women's Basketball. Round: 0. Binghamton vs Notre Dame. Played at .

Score by periods	1st	2nd	3rd	4th	Total
Binghamton	18	11	12	12	53
Notre Dame	28	28	33	14	103

	In	Off	2nd	Fast	Bench
Points	Paint	T/O	Chance	Break	
BING	12	8	29	19	34
ND	52	29	19	34	16

Dec. 19, 2018
Purcell Pavilion (Notre Dame, Ind.)

Western Ky. 53 • 5-8

#	Player		Total		3-Ptr		Rebounds					PF	TP	A	TO	Blk	Stl	Min
			FG-FGA	FG-FGA	FT-FTA	Off	Def	Tot										
04	Dee Givens	f	3-16	2-6	2-2	2	0	2	2	10	3	2	2	5	37			
15	Raneem Elgedawy	f	5-17	0-1	0-3	5	2	7	2	10	0	6	1	0	23			
11	Alexis Brewer	g	3-10	2-8	1-2	2	1	3	4	9	0	1	0	3	28			
22	Sherry Porter	g	2-6	1-2	0-0	0	0	0	1	5	1	3	0	0	15			
30	Meral Abdelgawad	g	2-5	2-4	0-0	1	0	1	2	6	1	1	0	0	14			
01	Arame Niang	g	2-6	1-2	0-0	2	2	4	2	5	1	2	2	3	21			
03	Sidnee Bopp	g	0-1	0-1	0-0	0	0	0	0	0	0	2	0	0	10			
05	Whitney Creech	g	3-6	0-1	0-0	0	3	3	2	6	3	2	0	1	32			
13	Jae'Lisa Allen	g	0-1	0-0	0-0	0	1	1	3	0	1	2	0	0	8			
20	Terri Smith	g	0-0	0-0	0-0	0	0	0	0	0	2	0	0	1	8			
34	Kallie Searcy	g	1-1	0-0	0-0	1	0	1	1	2	0	0	0	0	4			
	Team					7	0	7										
Totals			21-69	8-25	3-9	20	9	29	19	53	12	21	5	13	200			
1st - FG %			3-17	17.6%	2nd: 3-15	20.0%	3rd: 7-18	38.9%	4th: 8-19	42.1%	Game: 21-69		30.4%	Deadball				
3rd %:			2-5	40.0%	1-5	50.0%	1-5	50.0%	5-10	50.0%	8-25		32.0%	Rebounds				
FT %:			0-0	0.0%	1-2	50.0%	0-3	0.0%	2-2	100.0%	3-7		42.9%	3				

Dec. 30, 2018
Notre Dame, Ind. (Purcell Pavilion)

Lehigh 68 • 8-3

#	Player	Total			3-Ptr			Rebounds			PF	TP	A	TO	Blk	Stl	Min
		FG	FGA	FG-FGA	FT	FTA	Off	Def	Tot								
12	Gena Grundhoffer	f	4-6	1-1	1-2	0	0	0	3	10	0	3	0	1	23		
30	Cameryn Benz	f	2-6	1-3	2-2	1	6	7	4	7	0	2	0	2	24		
15	Camryn Buhr	g	4-12	0-0	3-4	4	2	6	2	11	2	6	0	1	31		
22	Hannah Hedstrom	g	1-5	0-1	3-6	0	3	3	5	5	2	2	0	2	26		
33	Hailey Pascoe	g	2-6	1-5	0-0	0	2	2	4	5	0	0	0	0	16		
03	Clair Steele		1-3	0-1	0-0	0	0	0	0	2	1	1	0	1	14		
05	Katie Rice		0-1	0-1	1-2	0	1	1	0	1	0	0	0	0	2		
10	Megan Walker		1-2	0-0	0-0	0	1	1	1	2	1	1	0	0	11		
11	Emily Johnson		0-0	0-0	0-0	0	0	0	0	0	0	0	0	0	1		
13	Meagan Eripret		0-0	0-0	0-0	0	0	0	0	0	0	0	0	0	2		
14	Paige Galiani		0-0	0-0	0-0	0	0	0	0	0	0	0	0	0	3		
25	Emma Grothaus		4-7	0-1	3-5	1	2	3	1	11	0	4	1	2	26		
44	Mary Clougherty		5-12	3-8	1-1	1	2	3	1	14	4	1	0	0	21		
	Team						3	0	3								
Totals			24-60	6-21	14-22	10	19	29	21	68	10	20	1	9	200		
1st - FG %:		6-14	42.9%	2nd: 5-17	29.4%	3rd: 5-13	38.5%	4th: 8-16	50.0%	Game: 24-60	40.0%	Deadball					
3FG %:		3-6	50.0%	1-3	33.3%	1-6	16.7%	1-6	16.7%	6-21	28.6%	Rebounds					
FT %:		4-5	80.0%	1-1	100.0%	6-8	75.0%	3-8	37.5%	14-22	63.6%	4					

Notre Dame 95 • 12-1

#	Player		Total			3-Ptr			Rebounds			PF	TP	A	TO	Blk	Stl	Min
			FG-FGA	FG-FGA	FT-FTA	FG-FGA	FG-FGA	FT-FTA	Off	Def	Tot							
11	Brianna Turner	f	4-8	0-0	7-9	1	6	7	4	15	1	3	3	0	22			
32	Jessica Shepard	f	6-10	0-0	2-3	3	4	7	3	14	6	2	0	1	29			
03	Marina Mabrey	g	6-8	3-4	4-5	1	5	6	0	19	7	4	1	1	29			
05	Jackie Young	g	5-7	0-0	0-0	0	5	5	1	10	4	2	0	4	29			
24	Arike Ogunbowale	g	8-11	2-3	5-5	0	1	1	2	23	1	3	0	1	28			
00	Jordan Nixon		0-2	0-2	0-0	0	5	5	2	4	1	0	0	0	15			
12	Abby Prohaska		1-1	0-0	2-2	0	1	1	1	4	0	0	0	0	15			
20	Nicole Benz		0-0	0-0	0-0	0	0	0	1	0	0	0	0	0	1			
22	Danielle Cosgrove		0-2	0-2	0-0	0	0	0	0	0	1	0	0	0	4			
30	Mikayla Vaughn		4-6	0-0	0-0	1	2	3	4	8	1	1	0	1	18			
33	Danielle Patterson		1-2	0-0	0-0	0	0	0	1	2	1	1	0	0	7			
40	Maureen Butler		0-0	0-0	0-0	0	0	0	0	0	0	0	0	0	3			
Team																		
Totals				35-57	5-11	20-24	7	30	37	19	95	26	17	4	8	200		
1st - FG %:			8-15	53.3%	2nd: 9-13	69.2%	3rd: 10-14	71.4%	4th: 8-15	53.3%	Game: 35-57	61.4%	Deadball					
3FG %:			0-0	0.0%	1-1	100.0%	3-4	75.0%	1-6	16.7%	5-11	45.5%	Rebounds					
FT %:			4-6	66.7%	7-7	100.0%	7-8	87.5%	2-3	66.7%	20-24	83.3%	0					

Officials: Tommi Paris, Kevin Dillard, Kathleen Lynch

Technical fouls: Lehigh-None. Notre Dame-None.

Attendance: 9149

2018-19 Women's Basketball. Round: 0. Lehigh vs Notre Dame. Played at .

Score by periods	1st	2nd	3rd	4th	Total						
Lehigh	19	12	17	20	68	Points	In	Off	2nd	Fast	Bench
Notre Dame	20	26	30	19	95	LEH	26	14	6	3	30
						ND	54	22	10	16	14

Jan. 6, 2019
Atlanta, Ga. (McCamish Pavilion)

Notre Dame 76 • 14-1

#	Player		Total			3-Ptr			Rebounds			PF	TP	A	TO	Blk	Stl	Min	
			FG	FGA	FG-FGA	FT	FTA	Off	Def	Tot									
11	Brianna Turner	f	5-7	0-0	1-2	5	4	9	3	11	3	2	2	3	24				
32	Jessica Shepard	f	8-10	0-0	3-5	1	6	7	3	19	6	2	2	0	33				
03	Marina Mabrey	g	5-9	1-4	0-2	0	2	2	0	11	4	1	0	1	32				
05	Jackie Young	g	5-8	0-2	0-0	2	2	4	3	10	2	3	1	1	22				
24	Arike Ogunbowale	g	5-17	0-4	3-6	0	3	3	1	13	12	2	0	2	34				
00	Jordan Nixon		1-2	0-0	0-0	0	2	2	4	2	2	2	0	0	25				
12	Abby Prohaska		0-0	0-0	0-0	0	0	0	0	0	0	0	0	0	6				
22	Danielle Cosgrove		0-0	0-0	0-0	0	0	0	0	0	0	0	0	0	1				
30	Mikayla Vaughn		4-7	0-0	0-0	1	3	4	0	8	1	0	0	1	12				
33	Danielle Patterson		1-2	0-0	0-0	0	0	0	0	2	0	1	0	0	10				
40	Maureen Butler		0-0	0-0	0-0	0	0	0	0	0	0	0	0	0	1				
Team																			
Totals				34-62	1-10	7-15	9	25	34	14	76	30	14	5	8	200			
1st - FG %:			7-15	46.7%	2nd: 10-20	50.0%	3rd: 9-14	64.3%	4th: 8-13	61.5%	Game: 34-62	54.8%	Deadball						
3FG %:			1-4	25.0%	0-5	0.0%	0-1	0.0%	0-0	0.0%	1-10	10.0%	Rebounds						
FT %:			3-6	50.0%	1-1	100.0%	1-2	50.0%	2-6	33.3%	7-15	46.7%	7,1						

Georgia Tech 55 • 11-4

#	Player		Total		3-Ptr		Rebounds					PF	TP	A	TO	Blk	Stl	Min
			FG-FGA	FG-FGA	FT-FTA	Off	Def	Tot	PF	TP								
13	Lorela Cubaj	f	3-4	0-0	1-3	2	5	7	3	7	1	5	1	1	1	26		
22	Elizabeth Dixon	f	6-12	0-0	0-0	3	4	7	1	12	1	2	3	0	0	36		
05	Elizabeth Balogun	g	6-13	1-6	1-2	0	2	2	4	14	0	2	1	0	27			
33	Francesca Pan	g	4-14	2-7	0-0	1	1	2	3	10	1	3	1	1	34			
41	Kierra Fletcher	g	1-8	0-0	5-6	3	3	6	3	7	6	4	0	0	36			
00	Daijah Jefferson		0-1	0-1	0-0	0	0	0	0	0	0	0	0	0	6			
04	Anne Francoise Diouf		0-1	0-0	0-0	0	0	0	0	0	0	0	0	0	2			
23	D'asia Gregg		0-0	0-0	0-0	0	0	0	0	0	0	0	0	0	1			
24	Chanin Scott		1-5	0-0	0-0	2	1	3	1	2	3	2	0	2	21			
31	Lotta-Maj Lahtinen		1-2	1-1	0-0	0	0	0	0	3	0	1	0	0	8			
44	Martine Fortune		0-1	0-0	0-0	1	0	1	0	0	0	0	0	1	3			
Team						1	4	5				1						
Totals				22-61	4-15	7-11	13	20	33	15	55	12	20	6	5	200		
1st - FG %:			6-16	37.5%	2nd: 3-14	21.4%	3rd: 6-14	42.9%	4th: 7-17	41.2%	Game: 22-61	36.1%	Deadball					
			3FG %:	1-4	25.0%	0-1	0.0%	1-4	25.0%	2-6	33.3%	4-15	26.7%	Rebounds				
			FT %:	2-2	100.0%	1-2	50.0%	4-7	57.1%	0-0	0.0%	7-11	63.6%	4				

Officials: Angelica Suffren, Luis Gonzalez, Denise Brooks

Technical fouls: Notre Dame-None. Georgia Tech-None.

Attendance: 3209

2018-19 Women's Basketball. Round: 0. Georgia Tech vs Notre Dame. Played at .

Score by periods	1st	2nd	3rd	4th	Total						
Notre Dame	18	21	19	18	76	Points	In	Off	2nd	Fast	Bench
Georgia Tech	15	7	17	16	55	ND	60	33	11	24	12
						GT	20	13	6	9	5

Jan. 3, 2019
Notre Dame, Ind. (Purcell Pavilion)

Pittsburgh 44 • 9-6

#	Player		Total		3-Ptr		Rebounds			PF	TP	A	TO	Blk	Stl	Min
			FG-FGA	FG-FGA	FT-FTA	Off	Def	Tot								
01	Danielle Garven	f	3-10	0-0	1-1	3	1	4	3	7	2	5	0	0	26	
14	Kauai Bradley	f	3-8	2-3	0-0	0	2	2	3	8	1	1	0	0	19	
11	Cara Judkins	c	0-3	0-0	0-2	3	1	4	3	0	0	2	0	1	17	
03	Jasmine Whitney	g	3-15	1-6	2-3	0	1	1	3	9	4	2	0	2	29	
04	Cassidy Walsh	g	2-14	2-8	0-0	1	2	3	3	6	1	1	0	2	32	
00	Jahsyni Knight		1-1	0-0	0-0	1	0	1	2	2	1	3	0	1	14	
10	Ismini Prapa		0-1	0-0	0-0	0	0	0	1	0	1	1	0	0	6	
13	Kyla Nelson		2-8	2-6	0-0	0	1	1	3	6	1	3	0	1	23	
22	Jaala Henry		1-2	0-0	0-0	2	3	5	0	2	0	2	0	1	16	
32	Kalista Walters		2-2	0-0	0-0	5	4	9	2	4	1	2	1	1	18	
Team						4	2	6				2				
Totals				17-64	7-23	3-6	19	17	36	23	44	12	24	1	9	200
1st: FG %: 41.4 26.6%			2nd: 2-17 11.8%			3rd: 4-18 22.2%			4th: 7-15 46.7%			Game: 17-64 26.6%			Deadball Rebounds 1	
3FG %: 33.3%			0-5 0.0%			1-6 16.7%			4-2 66.7%			7-23 30.4%				
FT %: 0.0 0.0%			0-1 0.0%			1-3 33.3%			4-2 100.0%			3-3 50.0%				



2018-19 Notre Dame Women's Basketball
Notre Dame Combined Team Statistics (as of Jan 06, 2019)
All games

RECORD:	OVERALL	HOME	AWAY	NEUTRAL
ALL GAMES	14-1	7-1	4-0	3-0
CONFERENCE	2-0	1-0	1-0	0-0
NON-CONFERENCE	12-1	6-1	3-0	3-0

#	Player	gp-gs	min	avg	Total		3-Point		F-Throw		Rebounds				pf	dq	a	to	blk	stl	pts	avg
					fg-fga	fg%	3fg-fga	3fg%	ft-fa	ft%	off	def	tot	avg								
24	Arike Ogunbowale	15-15	479	31.9	123-252	.488	19-64	.297	66-86	.767	11	66	77	5.1	27	0	60	37	2	25	331	22.1
32	Jessica Shepard	14-14	392	28.0	92-152	.605	0-1	.000	31-51	.608	47	86	133	9.5	29	0	43	30	8	15	215	15.4
05	Jackie Young	15-15	468	31.2	85-150	.567	6-16	.375	53-68	.779	27	69	96	6.4	23	0	70	30	8	19	229	15.3
03	Marina Mabrey	10-10	274	27.4	53-101	.525	22-54	.407	15-23	.652	3	22	25	2.5	15	0	45	16	6	16	143	14.3
11	Brianna Turner	15-15	384	25.6	76-130	.585	0-0	.000	42-59	.712	42	72	114	7.6	24	0	21	22	33	13	194	12.9
33	Danielle Patterson	12-1	156	13.0	23-41	.561	0-0	.000	6-6	1.000	8	11	19	1.6	8	0	2	7	5	0	52	4.3
30	Mikayla Vaughn	15-0	157	10.5	24-39	.615	0-0	.000	10-14	.714	15	22	37	2.5	24	1	3	10	8	7	58	3.9
00	Jordan Nixon	10-3	209	20.9	12-27	.444	5-11	.455	7-7	1.000	2	19	21	2.1	16	0	22	29	0	12	36	3.6
10	Katlyn Gilbert	7-0	111	15.9	9-20	.450	1-5	.200	6-8	.750	4	11	15	2.1	11	0	2	8	1	6	25	3.6
22	Danielle Cosgrove	11-0	67	6.1	8-26	.308	5-19	.263	0-0	.000	1	8	9	0.8	6	0	3	5	4	1	21	1.9
12	Abby Prohaska	14-2	222	15.9	5-21	.238	0-2	.000	14-16	.875	9	15	24	1.7	20	0	26	12	1	11	24	1.7
20	Nicole Benz	11-0	38	3.5	2-8	.250	0-3	.000	2-2	1.000	2	9	11	1.0	1	0	2	2	0	0	6	0.5
40	Maureen Butler	10-0	42	4.2	1-9	.111	0-0	.000	0-2	.000	4	2	6	0.6	5	0	3	1	1	1	2	0.2
Team											35	30	65					4				
Total.....		15	2999		513-976	.526	58-175	.331	252-342	.737	210	442	652	43.5	209	1	302	213	77	126	1336	89.1
Opponents.....		15	2998		363-993	.366	94-334	.281	132-193	.684	206	295	501	33.4	287	-	208	253	45	107	952	63.5

TEAM STATISTICS	ND	OPP	Date	Opponent	Score	Att.
SCORING	1336	952	11/09/18	HARVARD	w 103-58	9149
Points per game	89.1	63.5	11/12/18	PENN	w 75-55	7854
Scoring margin	+25.6	-	11/17/18	at DePaul	w 101-77	2833
FIELD GOALS-ATT	513-976	363-993	11/22/18	vs Gonzaga	w 81-65	1018
Field goal pct	.526	.366	11/23/18	vs Drake	w 82-64	1156
3 POINT FG-ATT	58-175	94-334	11/24/18	vs Oregon State	w 91-81	1866
3-point FG pct	.331	.281	11/29/18	IOWA	w 105-71	7968
3-pt FG made per game	3.9	6.3	12/02/18	UConn	L 71-89	9149
FREE THROWS-ATT	252-342	132-193	12/08/18	at Toledo	w 72-56	6059
Free throw pct	.737	.684	12/16/18	BINGHAMTON	w 103-53	8183
F-Throws made per game	16.8	8.8	12/19/18	WESTERN KY.	w 94-53	7502
REBOUNDS	652	501	12/22/18	at Marquette	w 87-63	3700
Rebounds per game	43.5	33.4	12/30/18	LEHIGH	w 95-68	9149
Rebounding margin	+10.1	-	* 01/03/19	PITTSBURGH	w 100-44	8566
ASSISTS	302	208	* 01/06/19	at Georgia Tech	w 76-55	3209
Assists per game	20.1	13.9				
TURNOVERS	213	253				
Turnovers per game	14.2	16.9				
Turnover margin	+2.7	-				
Assist/turnover ratio	1.4	0.8				
STEALS	126	107				
Steals per game	8.4	7.1				
BLOCKS	77	45				
Blocks per game	5.1	3.0				
ATTENDANCE	67520	19841				
Home games-Avg/Game	8-8440	4-3950				
Neutral site-Avg/Game	-	3-1347				

* - Conference game

Score by Periods	1st	2nd	3rd	4th	Totals
Notre Dame	327	366	376	267	1336
Opponents	269	199	236	248	952



2018-19 Notre Dame Women's Basketball
Notre Dame Combined Team Statistics (as of Jan 06, 2019)
Conference games only

RECORD:	OVERALL	HOME	AWAY	NEUTRAL
ALL GAMES	2-0	1-0	1-0	0-0
CONFERENCE	2-0	1-0	1-0	0-0
NON-CONFERENCE	0-0	0-0	0-0	0-0

#	Player	gp-gs	min	avg	Total		3-Point		F-Throw		Rebounds				pf	dq	a	to	blk	stl	pts	avg
					fg-fga	fg%	3fg-fga	3fg%	ft-fa	ft%	off	def	tot	avg								
24	Arike Ogunbowale	2-2	54	27.0	12-26	.462	2-6	.333	5-9	.556	0	6	6	3.0	1	0	15	5	0	4	31	15.5
03	Marina Mabrey	2-2	55	27.5	13-23	.565	5-13	.385	0-2	.000	1	5	6	3.0	2	0	11	2	2	4	31	15.5
05	Jackie Young	2-2	42	21.0	11-17	.647	0-2	.000	4-7	.571	5	5	10	5.0	3	0	4	5	1	2	26	13.0
32	Jessica Shepard	2-2	51	25.5	9-18	.500	0-0	.000	7-9	.778	7	11	18	9.0	4	0	11	3	2	0	25	12.5
11	Brianna Turner	2-2	41	20.5	7-12	.583	0-0	.000	6-10	.600	7	7	14	7.0	3	0	3	2	5	4	20	10.0
30	Mikayla Vaughn	2-0	28	14.0	7-11	.636	0-0	.000	3-4	.750	3	5	8	4.0	1	0	1	1	1	2	17	8.5
00	Jordan Nixon	2-0	47	23.5	3-6	.500	1-2	.500	4-4	1.000	0	3	3	1.5	5	0	6	3	0	2	11	5.5
33	Danielle Patterson	2-0	33	16.5	4-7	.571	0-0	.000	0-0	.000	1	1	2	1.0	0	0	0	1	1	0	8	4.0
22	Danielle Cosgrove	2-0	11	5.5	2-4	.500	1-3	.333	0-0	.000	0	2	2	1.0	0	0	0	1	0	0	5	2.5
12	Abby Prohaska	2-0	27	13.5	0-3	.000	0-1	.000	2-2	1.000	0	2	2	1.0	0	0	2	3	0	2	2	1.0
40	Maureen Butler	2-0	7	3.5	0-0	.000	0-0	.000	0-0	.000	0	1	1	0.5	1	0	1	0	0	0	0	0.0
20	Nicole Benz	1-0	4	4.0	0-0	.000	0-0	.000	0-0	.000	0	0	0	0.0	0	0	0	0	0	0	0	0.0
Team											4	7	11					1				
Total.....		2	400		68-127	.535	9-27	.333	31-47	.660	28	55	83	41.5	20	0	54	27	12	20	176	88.0
Opponents.....		2	400		39-125	.312	11-38	.289	10-17	.588	32	37	69	34.5	38	-	24	44	7	14	99	49.5

TEAM STATISTICS	ND	OPP	Date	Opponent	Score	Att.
SCORING	176	99	* 01/03/19	PITTSBURGH	w 100-44	8566
Points per game	88.0	49.5	* 01/06/19	at Georgia Tech	w 76-55	3209
Scoring margin	+38.5	-	* - Conference game			
FIELD GOALS-ATT	68-127	39-125				
Field goal pct	.535	.312				
3 POINT FG-ATT	9-27	11-38				
3-point FG pct	.333	.289				
3-pt FG made per game	4.5	5.5				
FREE THROWS-ATT	31-47	10-17				
Free throw pct	.660	.588				
F-Throws made per game	15.5	5.0				
REBOUNDS	83	69				
Rebounds per game	41.5	34.5				
Rebounding margin	+7.0	-				
ASSISTS	54	24				
Assists per game	27.0	12.0				
TURNOVERS	27	44				
Turnovers per game	13.5	22.0				
Turnover margin	+8.5	-				
Assist/turnover ratio	2.0	0.5				
STEALS	20	14				
Steals per game	10.0	7.0				
BLOCKS	12	7				
Blocks per game	6.0	3.5				
ATTENDANCE	8566	3209				
Home games-Avg/Game	1-8566	1-3209				
Neutral site-Avg/Game	-	0-0				

Score by Periods	1st	2nd	3rd	4th	Totals
Notre Dame	50	49	44	33	176
Opponents	25	11	27	36	99



2018-19 Notre Dame Women's Basketball
Notre Dame Combined Team Statistics (as of Jan 04, 2019)
Home games

RECORD:	OVERALL	HOME	AWAY	NEUTRAL
ALL GAMES	7-1	7-1	0-0	0-0
CONFERENCE	1-0	1-0	0-0	0-0
NON-CONFERENCE	6-1	6-1	0-0	0-0

#	Player	gp-gs	min	avg	Total		3-Point		F-Throw		Rebounds				pf	dq	a	to	blk	stl	pts	avg
					fg-fga	fg%	3fg-fga	3fg%	ft-fa	ft%	off	def	tot	avg								
24	Arike Ogunbowale	8-8	229	28.6	62-120	.517	12-34	.353	32-37	.865	7	35	42	5.3	13	0	31	18	1	10	168	21.0
03	Marina Mabrey	6-6	161	26.8	40-71	.563	17-37	.459	12-16	.750	2	15	17	2.8	7	0	33	8	5	12	109	18.2
32	Jessica Shepard	8-8	201	25.1	52-84	.619	0-0	.000	14-22	.636	21	39	60	7.5	17	0	30	16	4	12	118	14.8
05	Jackie Young	8-8	236	29.5	41-69	.594	1-3	.333	26-36	.722	15	32	47	5.9	9	0	32	16	4	12	109	13.6
11	Brianna Turner	8-8	190	23.8	34-60	.567	0-0	.000	31-44	.705	25	39	64	8.0	10	0	13	8	18	4	99	12.4
30	Mikayla Vaughn	8-0	112	14.0	19-29	.655	0-0	.000	10-14	.714	12	15	27	3.4	19	1	1	7	6	6	48	6.0
00	Jordan Nixon	6-2	142	23.7	7-20	.350	4-10	.400	7-7	1.000	2	15	17	2.8	8	0	17	21	0	9	25	4.2
33	Danielle Patterson	6-0	76	12.7	11-22	.500	0-0	.000	0-0	.000	3	6	9	1.5	3	0	2	3	2	0	22	3.7
22	Danielle Cosgrove	6-0	51	8.5	8-22	.364	5-15	.333	0-0	.000	1	7	8	1.3	3	0	3	4	4	1	21	3.5
10	Katlyn Gilbert	3-0	29	9.7	2-4	.500	1-2	.500	2-3	.667	2	2	4	1.3	3	0	1	2	0	1	7	2.3
12	Abby Prohaska	7-0	105	15.0	2-12	.167	0-2	.000	10-10	1.000	5	9	14	2.0	7	0	11	8	1	6	14	2.0
20	Nicole Benz	7-0	31	4.4	1-5	.200	0-2	.000	2-2	1.000	2	7	9	1.3	1	0	1	1	0	0	4	0.6
40	Maureen Butler	7-0	36	5.1	1-8	.125	0-0	.000	0-2	.000	3	2	5	0.7	4	0	3	1	1	1	2	0.3
Team											20	20	40					3				
Total.....		8	1599		280-526	.532	40-105	.381	146-193	.756	120	243	363	45.4	104	1	178	116	46	74	746	93.2
Opponents.....		8	1601		187-538	.348	53-200	.265	64-96	.667	121	154	275	34.4	157	-	105	150	20	65	491	61.4

TEAM STATISTICS	ND	OPP	Date	Opponent	Score	Att.
SCORING	746	491	11/09/18	HARVARD	w 103-58	9149
Points per game	93.2	61.4	11/12/18	PENN	w 75-55	7854
Scoring margin	+31.9	-	11/29/18	IOWA	w 105-71	7968
FIELD GOALS-ATT	280-526	187-538	12/02/18	UCONN	L 71-89	9149
Field goal pct	.532	.348	12/16/18	BINGHAMTON	w 103-53	8183
3 POINT FG-ATT	40-105	53-200	12/19/18	WESTERN KY.	w 94-53	7502
3-point FG pct	.381	.265	12/30/18	LEHIGH	w 95-68	9149
3-pt FG made per game	5.0	6.6	* 01/03/19	PITTSBURGH	w 100-44	8566
FREE THROWS-ATT	146-193	64-96	* - Conference game			
Free throw pct	.756	.667				
F-Throws made per game	18.3	8.0				
REBOUNDS	363	275				
Rebounds per game	45.4	34.4				
Rebounding margin	+11.0	-				
ASSISTS	178	105				
Assists per game	22.3	13.1				
TURNOVERS	116	150				
Turnovers per game	14.5	18.8				
Turnover margin	+4.3	-				
Assist/turnover ratio	1.5	0.7				
STEALS	74	65				
Steals per game	9.3	8.1				
BLOCKS	46	20				
Blocks per game	5.8	2.5				
ATTENDANCE	67520	0				
Home games-Avg/Game	8-8440	0-0				
Neutral site-Avg/Game	-	0-0				

Score by Periods	1st	2nd	3rd	4th	Totals
Notre Dame	192	198	218	138	746
Opponents	123	100	120	148	491



2018-19 Notre Dame Women's Basketball
Notre Dame Combined Team Statistics (as of Jan 06, 2019)
Away games

RECORD:	OVERALL	HOME	AWAY	NEUTRAL
ALL GAMES	4-0	0-0	4-0	0-0
CONFERENCE	1-0	0-0	1-0	0-0
NON-CONFERENCE	3-0	0-0	3-0	0-0

#	Player	gp-gs	min	avg	Total		3-Point		F-Throw		Rebounds				pf	dq	a	to	blk	stl	pts	avg
					fg-fga	fg%	3fg-fga	3fg%	ft-fa	ft%	off	def	tot	avg								
24	Arike Ogunbowale	4-4	142	35.5	35-72	.486	2-14	.143	19-23	.826	1	15	16	4.0	7	0	21	13	0	8	91	22.8
32	Jessica Shepard	4-4	128	32.0	28-46	.609	0-0	.000	9-15	.600	19	30	49	12.3	10	0	10	9	2	1	65	16.3
05	Jackie Young	4-4	126	31.5	23-40	.575	1-5	.200	11-13	.846	5	26	31	7.8	9	0	18	11	2	4	58	14.5
11	Brianna Turner	4-4	103	25.8	21-32	.656	0-0	.000	4-5	.800	8	17	25	6.3	9	0	7	10	7	4	46	11.5
03	Marina Mabrey	3-3	94	31.3	10-23	.435	4-13	.308	1-4	.250	1	6	7	2.3	5	0	10	7	1	3	25	8.3
33	Danielle Patterson	3-0	42	14.0	8-10	.800	0-0	.000	6-6	1.000	2	1	3	1.0	5	0	0	3	3	0	22	7.3
00	Jordan Nixon	4-1	67	16.8	5-7	.714	1-1	1.000	0-0	.000	0	4	4	1.0	8	0	5	8	0	3	11	2.8
30	Mikayla Vaughn	4-0	22	5.5	5-8	.625	0-0	.000	0-0	.000	2	4	6	1.5	1	0	2	3	1	1	10	2.5
12	Abby Prohaska	4-0	59	14.8	2-3	.667	0-0	.000	2-2	1.000	0	4	4	1.0	4	0	8	1	0	4	6	1.5
20	Nicole Benz	2-0	2	1.0	1-1	1.000	0-0	.000	0-0	.000	0	1	1	0.5	0	0	1	0	0	0	2	1.0
10	Katlyn Gilbert	1-0	9	9.0	0-0	.000	0-0	.000	0-0	.000	0	2	2	2.0	2	0	0	1	0	0	0	0.0
40	Maureen Butler	2-0	3	1.5	0-0	.000	0-0	.000	0-0	.000	0	0	0	0.0	0	0	0	0	0	0	0	0.0
22	Danielle Cosgrove	3-0	3	1.0	0-0	.000	0-0	.000	0-0	.000	0	0	0	0.0	0	0	0	0	0	0	0	0.0
Team											5	7	12					1				
Total.....		4	800		138-242	.570	8-33	.242	52-68	.765	43	117	160	40.0	60	0	82	67	16	28	336	84.0
Opponents.....		4	797		96-265	.362	25-87	.287	34-48	.708	52	65	117	29.3	67	-	55	63	13	26	251	62.8

TEAM STATISTICS	ND	OPP	Date	Opponent	Score	Att.
SCORING	336	251	11/17/18	at DePaul	w 101-77	2833
Points per game	84.0	62.8	12/08/18	at Toledo	w 72-56	6059
Scoring margin	+21.3	-	12/22/18	at Marquette	w 87-63	3700
FIELD GOALS-ATT	138-242	96-265	* 01/06/19	at Georgia Tech	w 76-55	3209
Field goal pct	.570	.362	* - Conference game			
3 POINT FG-ATT	8-33	25-87				
3-point FG pct	.242	.287				
3-pt FG made per game	2.0	6.3				
FREE THROWS-ATT	52-68	34-48				
Free throw pct	.765	.708				
F-Throws made per game	13.0	8.5				
REBOUNDS	160	117				
Rebounds per game	40.0	29.3				
Rebounding margin	+10.8	-				
ASSISTS	82	55				
Assists per game	20.5	13.8				
TURNOVERS	67	63				
Turnovers per game	16.8	15.8				
Turnover margin	-1.0	-				
Assist/turnover ratio	1.2	0.9				
STEALS	28	26				
Steals per game	7.0	6.5				
BLOCKS	16	13				
Blocks per game	4.0	3.3				
ATTENDANCE	0	15801				
Home games-Avg/Game	0-0	4-3950				
Neutral site-Avg/Game	-	0-0				

Score by Periods	1st	2nd	3rd	4th	Totals
Notre Dame	80	98	84	74	336
Opponents	82	53	64	52	251



**2018-19 Notre Dame Women's Basketball
Notre Dame Combined Team Statistics (as of Dec 24, 2018)
Ranked Opponents**

RECORD:	OVERALL	HOME	AWAY	NEUTRAL
ALL GAMES	4-1	1-1	2-0	1-0
CONFERENCE	0-0	0-0	0-0	0-0
NON-CONFERENCE	4-1	1-1	2-0	1-0

#	Player	gp-gs	min	avg	Total		3-Point		F-Throw		Rebounds				pf	dq	a	to	blk	stl	pts	avg
					fg-fga	fg%	3fg-fga	3fg%	ft-fa	ft%	off	def	tot	avg								
24	Arike Ogunbowale	5-5	183	36.6	47-101	.465	7-25	.280	23-31	.742	5	21	26	5.2	13	0	16	12	0	8	124	24.8
05	Jackie Young	5-5	185	37.0	31-59	.525	4-7	.571	24-31	.774	11	29	40	8.0	11	0	25	9	3	4	90	18.0
11	Brianna Turner	5-5	144	28.8	30-45	.667	0-0	.000	13-18	.722	13	25	38	7.6	8	0	8	8	11	5	73	14.6
32	Jessica Shepard	5-5	160	32.0	32-59	.542	0-1	.000	6-15	.400	25	35	60	12.0	12	0	10	9	1	4	70	14.0
03	Marina Mabrey	4-4	110	27.5	14-40	.350	5-23	.217	8-11	.727	1	8	9	2.3	11	0	13	7	1	5	41	10.3
33	Danielle Patterson	5-0	62	12.4	10-16	.625	0-0	.000	6-6	1.000	3	5	8	1.6	5	0	1	3	4	0	26	5.2
00	Jordan Nixon	2-1	30	15.0	4-4	1.000	1-1	1.000	0-0	.000	0	2	2	1.0	4	0	3	6	0	3	9	4.5
12	Abby Prohaska	5-0	68	13.6	2-6	.333	0-0	.000	4-4	1.000	4	2	6	1.2	7	0	10	3	1	4	8	1.6
22	Danielle Cosgrove	2-0	7	3.5	1-5	.200	1-4	.250	0-0	.000	0	1	1	0.5	1	0	0	0	0	0	3	1.5
20	Nicole Benz	3-0	6	2.0	2-2	1.000	0-0	.000	0-0	.000	1	2	3	1.0	0	0	1	0	0	0	4	1.3
10	Katlyn Gilbert	3-0	28	9.3	1-2	.500	1-2	.500	0-0	.000	0	3	3	1.0	5	0	1	3	0	0	3	1.0
30	Mikayla Vaughn	5-0	14	2.8	1-1	1.000	0-0	.000	2-2	1.000	1	2	3	0.6	5	1	1	2	1	0	4	0.8
40	Maureen Butler	1-0	3	3.0	0-2	.000	0-0	.000	0-0	.000	0	0	0	0.0	0	0	0	0	0	0	0	0.0
Team											8	9	17									
Total.....		5	1000		175-342	.512	19-63	.302	86-118	.729	72	144	216	43.2	82	1	89	62	22	33	455	91.0
Opponents.....		5	997		142-345	.412	33-116	.284	64-82	.780	62	109	171	34.2	101	-	72	67	16	30	381	76.2

TEAM STATISTICS	ND	OPP	Date	Opponent	Score	Att.
SCORING	455	381	11/17/18	at DePaul	w 101-77	2833
Points per game	91.0	76.2	11/24/18	vs Oregon State	w 91-81	1866
Scoring margin	+14.8	-	11/29/18	IOWA	w 105-71	7968
FIELD GOALS-ATT	175-342	142-345	12/02/18	UCONN	L 71-89	9149
Field goal pct	.512	.412	12/22/18	at Marquette	w 87-63	3700
3 POINT FG-ATT	19-63	33-116	* - Conference game			
3-point FG pct	.302	.284				
3-pt FG made per game	3.8	6.6				
FREE THROWS-ATT	86-118	64-82				
Free throw pct	.729	.780				
F-Throws made per game	17.2	12.8				
REBOUNDS	216	171				
Rebounds per game	43.2	34.2				
Rebounding margin	+9.0	-				
ASSISTS	89	72				
Assists per game	17.8	14.4				
TURNOVERS	62	67				
Turnovers per game	12.4	13.4				
Turnover margin	+1.0	-				
Assist/turnover ratio	1.4	1.1				
STEALS	33	30				
Steals per game	6.6	6.0				
BLOCKS	22	16				
Blocks per game	4.4	3.2				
ATTENDANCE	17117	8399				
Home games-Avg/Game	2-8558	2-3266				
Neutral site-Avg/Game	-	1-1866				

Score by Periods	1st	2nd	3rd	4th	Totals
Notre Dame	106	117	129	103	455
Opponents	120	84	94	83	381

TV/RADIO ROSTER



#0 Jordan Nixon
Fr. // G // 5-8
New York City, N.Y.
Mary Louis Academy



#2 Kaitlin Cole
Jr. // G // 5-10
Toledo, Ohio
Sylvania Northview



#3 Marina Mabrey
Sr. // G // 5-11
Belmar, N.J.
Manasquan



#5 Jackie Young
Jr. // G // 6-0
Princeton, Ind.
Princeton Community



#10 Katlyn Gilbert
Fr. // G // 5-10
Indianapolis, Ind.
Heritage Christian



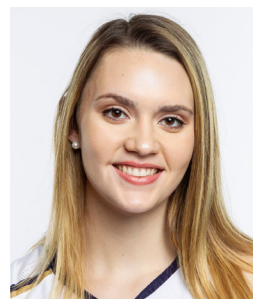
#11 Brianna Turner
Gs. // F // 6-3
Pearland, Texas
Manvel



#12 Abby Prohaska
Fr. // G // 5-10
Libert Township, Ohio
Lakota West



#20 Nicole Benz
So. // G // 5-8
Valencia, Calif.
William S. Hart



#22 Danielle Cosgrove
Fr. // F // 6-4
Holbrook, N.Y.
Sachem East



#24 Arike Ogunbowale
Sr. // G // 5-8
Milwaukee, Wis.
Divine Savior Holy Angels



#30 Mikayla Vaughn
So. // C // 6-3
Philadelphia, Penn.
Paul VI



#32 Jessica Shepard
Sr. // F // 6-4
Fremont, Neb.
Nebraska // Fremont



#33 Danielle Patterson
So. // 6-2 // F
Brooklyn, N.Y.
The Mary Louis Academy



#40 Maureen Butler
Sr. // F // 6-1
Livonia, Mich.
Dearborn Divine Child



Muffet McGraw
Karen & Kevin Keyes Head Coach
32nd Season at Notre Dame
37th Overall as Head Coach



Carol Owens
Associate Head Coach
10th Season as Associate
19th Season at Notre Dame



Niele Ivey
Associate Head Coach
3rd Season as Associate
12th Season at Notre Dame



Beth Cunningham
Associate Coach
7th Season



Katie Capps
Director of Ops - 4th Season
Sport Admin - 1st Season